

Innovate.
in architecture.

12



Naturally versatile

As we are seeing a revival of natural materials due to the ecological transition, ceramic products such as building bricks, clay roof tiles and clay pavers are confirming their strong reputation. The fact that they are made with renewable, local raw materials, have a long life and can be reused, contributes to their sustainable character. In addition, ceramics are highly resistant to the ravages of time and are not only good for the planet, but also for our own health. At the same time, the ecological transition is also leading to new products in the ceramics sector, such as Eco-brick façade bricks and Elfino tiles, which have an added advantage, thanks to their dematerialisation.

In addition to their technical-ecological advantages, their appearance is also an attractive feature of ceramic materials. For example, earthy colours are making a comeback under the slogan 'fifty shades of red' and tactility is gaining importance in our digitalised world. At the same time, Wienerberger is constantly expanding its range with new colours and finishes so that the options and variety of applications are literally unlimited. Aesthetically you can do anything with roof tiles and bricks, both in new buildings and renovations.

Find out how authenticity, sustainability and beauty can go hand in hand in this inspiring magazine.

Enjoy reading!

Earthy colours and materials are making a comeback

Although brick has never disappeared as a building material, the material is currently undergoing a revival. Thanks to the eco-wave, among other things, which is putting earth materials back on the map.



Earthy materials

The fact that natural materials are once again doing extremely well today is due to various factors. Climate change, for example, and the great attention to the environment that goes with it. In the pursuit of a circular economy, renewable raw materials and therefore natural materials are increasingly being chosen.

In this search for materials that are not harmful to the planet, people are also concerned about their own well-being. Individuals are increasingly questioning the origin of a material and its impact on their own health. In addition, our mental well-being benefits from the choice of natural materials. They bring nature back into our lives and offer a tactile counterbalance to increasing digitalisation.

Many gradations of red

Just like those natural materials, the corresponding colours are doing extremely well. There is brown and green, of course, but also terracotta. Because of its connection to the earth, terracotta radiates a warm sense of comfort. Moreover, the colour is suitable for all seasons.

As terracotta literally means burnt earth, the range of colours is as extensive as the different types of clay in our soil. Thus, terracotta can have a brownish undertone, but also a red, purple, orange or even a pink one. Thanks to this variation, the combination possibilities are endless, which is why the colours are now also appearing on kitchen cabinets, furniture and accessories.

See p. 48

From floors to walls

The fact that ceramic materials play within this colour range anyway, makes them especially popular these days. They also lend themselves perfectly to diverse applications. For example, it is perfectly possible to let the exterior walls continue visually indoors. Thus the wall no longer needs to be painted, while it also serves as an accent wall. By bringing nature inside from outdoors, you create more peace and quiet in your home.

In addition, clay products are excellent for flooring. They absorb the heat of the sun or heater, and then gently release it again. This makes it nice to walk on them with your bare feet. These products, often made by craftsmen, give a room an authentic, warm appearance.



Hortus Althea. jannenlies. tuin en landschap, Putte

These earthy materials can also be perfectly combined with one of the many terracotta-inspired paint shades. The friendly, warm colours can be integrated into any room, from the bathroom to the living room. Although they combine perfectly with natural materials such as wood or leather, you can also choose less obvious materials and colours such as luxurious fabrics. The fact that terracotta is easy to combine means that today it is so much more than the once characteristic flower pots or tiles. Just like the earth itself, this colour never reveals its secrets all at once.

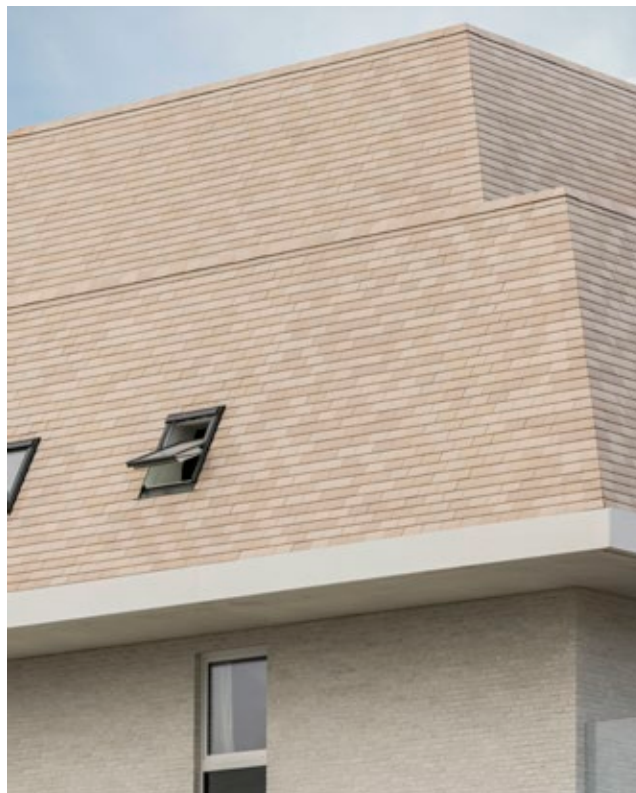


Brick-mix of Iberia Galicia, Iberia Navarra, Iberia Andalucia and Iberia Asturia. Architect Eva Doods, Keerbergen

Aesthetically, technically and environmentally clean

Roof tile Elfino: comfort is an asset

The time when roof tiles were only required to have technical qualities is long gone. The roof is now an integral part of the aesthetic of an architectural project. With the new colours for the Elfino roof tile, Wienerberger is joining in this trend.



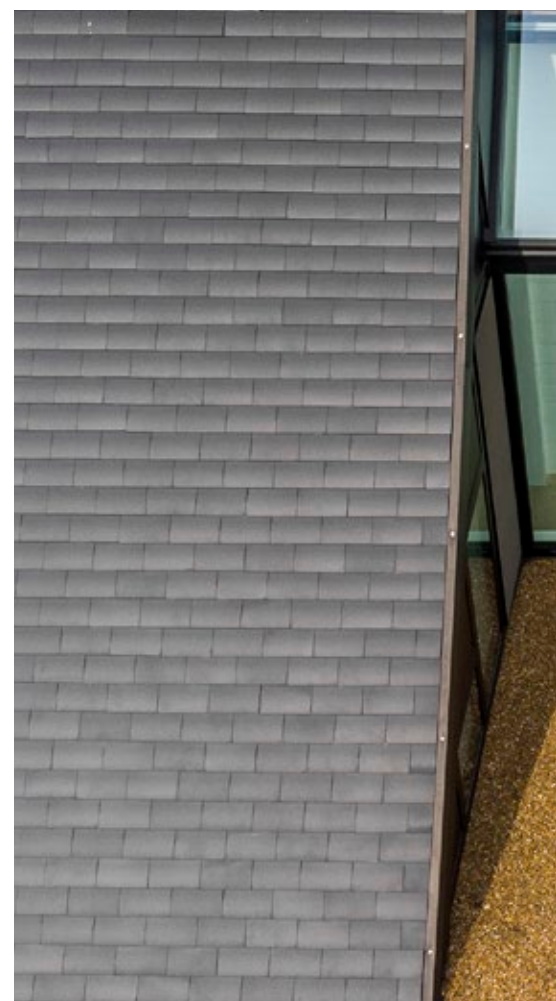
Façade: Agora Super White
Roof: Plain tile Elfino 2 shades Beige (custom product)
Architects Vanbecelaere Hauspie, Veurne

Multifunctional

—

As private individuals are increasingly paying attention to their homes, the range of building materials and finishing options continues to expand. The roof tile is no longer a purely functional tool. Today, it also plays an important aesthetic role in the appearance of a building. The Elfino tile, for example, provides an outstanding appearance after installation, giving the roof a much lighter appearance.

The Elfino roof tile is not only available in Slate Engobe and Agate Grey, but now also in Braised Blue. This allows you to create a monolithic architectural volume combined with bricks, for example, or to play with contrasts between wall and roof. The interior-external relationship can also be strengthened with these innovative shades.



Striking colours

–

The soft, natural tones give the home a warm feeling and help to make it a calming, homey environment. Shades like agate grey contribute to our mental wellbeing, thanks to their emotional connotations.

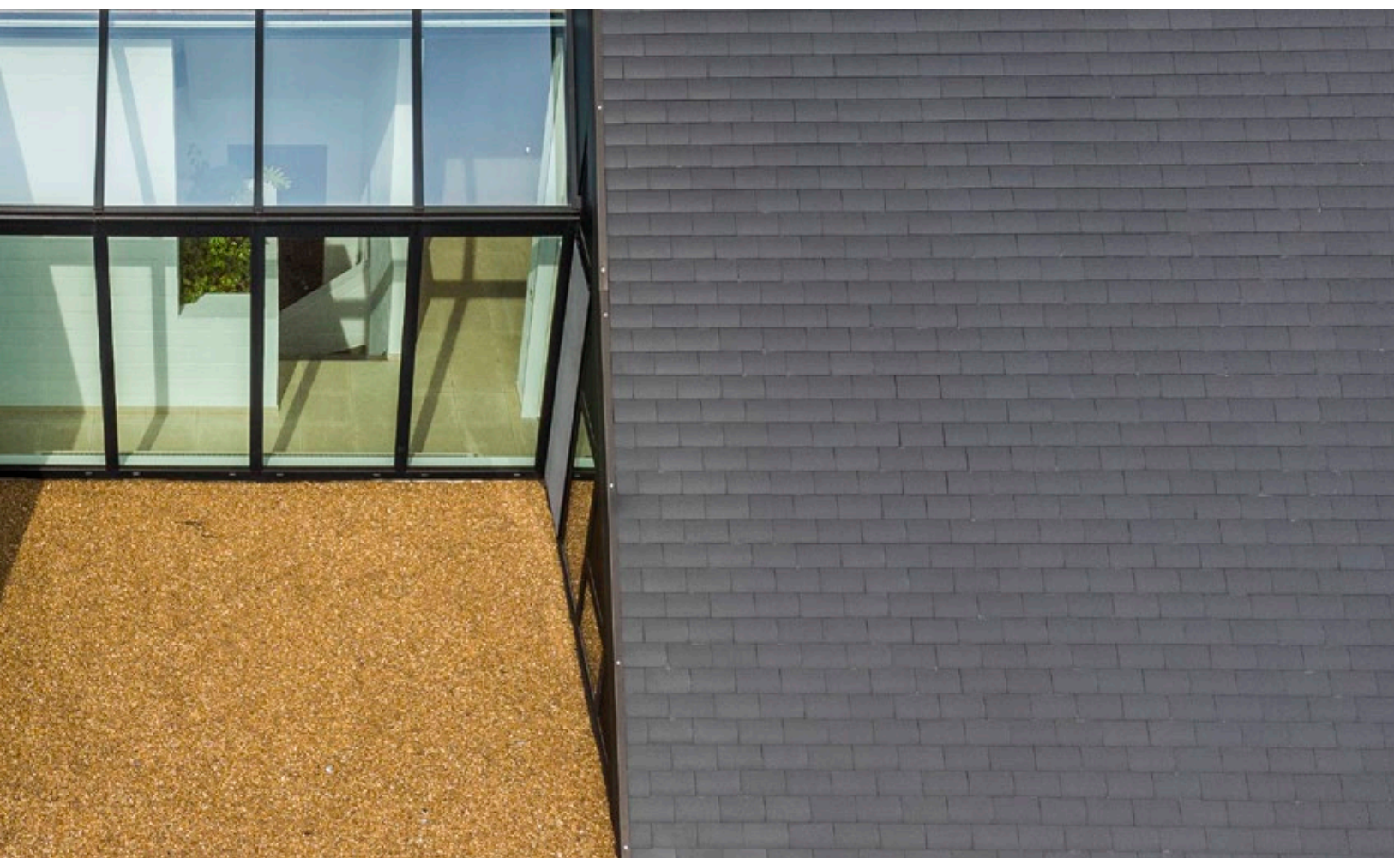
The Elfino roof tile in Braised Blue also fits in well with this picture. During the firing process, oxygen is extracted which gives the plain tile a characteristic blue-grey colour in the mass. This blue-grey colour emanates something mysterious and dreamy, and thus evokes a sense of comfort. The house becomes a cosy cocoon. At the same time, this refined finish gives the roof tiles a stronger tactile appearance. Textures from pre-industrial times are given a contemporary update, and the austere, industrial design is given a more traditional touch. This is another way in which this tile adapts perfectly to the prevailing trends in the world of interior design and architecture.

Environmentally clean

–

The Elfino roof tile combines the outstanding performance of a thoroughbred ceramic roof tile with the contemporary design of a fine, beautifully connected slate. This makes it perfect for both new construction and renovation, where it enhances the sleek detailing of the architecture. In addition, the tile is guaranteed to last for a long time, with a warranty of no less than 30 years.

In addition, the Elfino roof tile scores well environmentally. It is produced in a sustainable way, using recyclable, natural, raw materials. Thanks to the engobe process, it is resistant to UV rays. The engobe – a fine, matt coating – is fired into the clay, and the result is much more durable than a coated finish. The roof tile is very dimensionally stable. And, moreover, it can be dismantled and reused elsewhere. The Elfino roof tile is also very environmentally friendly.



The same geometry, up-to-date appearance

Anyone renovating the façade of their home can kill two birds with one stone: both visually and technically, a façade renovation gives a building a contemporary, sustainable upgrade.

Huge range of choices

—

Because bricks and roof tiles come in all sizes and colours, they offer endless options for giving the façade a personal touch. The type of brick chosen depends on the desired look of the project.

The choice of brick has a strong influence on the more classical or radically contemporary look of a building, for example, and it reinforces the vertical or horizontal play of lines in a façade. The combination of roof tiles and bricks in the same colour strengthens the monolithic character of the building. Especially in combination with tone-on-tone joints, a glued finish or a roof in the same colour.

In addition, subtle colour nuances and tactility are gaining in importance today. The fact that a main colour is accompanied by a series of shades results in richer façades, and thus a more exciting architectural whole. At the same time, the rough appearance gives the façade extra pizzazz, without compromising on elegance.

Living more comfortably

—

In addition to the aesthetic impact, façade renovation obviously offers significant technical advantages. The renovation of the façade, for example, allows an immediate improvement to be made in terms of insulation. Without façade insulation, some 26% of the heat in the house is lost through the walls. The insulation therefore has a strong impact on the energy bill.

In response to the need for more insulation, Wienerberger offers the narrower Eco-brick facing brick.

Monolithic whole

—



These residents transformed a stately, previously classical villa into a strikingly contemporary building. To do this, they had both the walls and the roof covered with red roof tiles. Although they chose the Tempest tile 44 Old Latem Red for a more traditional type, in combination with the windows it still comes across as very contemporary.

See p. 72



Façade and roof: Tempest tile 44 Old Latem Red. Architect Edel Gallein, Oostkamp



Milosa Passiebloem. Patrimonium Building Management City of Bruges

Historic with contemporary façade

In the historic centre of Bruges, the former police station was given a new lease on life as a contemporary meeting place. Thanks to the flexible structure, the original building from the 1970s could largely be preserved. Thanks to its dark red colour, the Milosa Passiebloem facing brick fits in perfectly with the historic surroundings, and at the same time, the colour variation, smooth texture and sleek design give the building a contemporary update.



See p. 30

Authentic materials

How do you transform a somewhat drab 1970s bungalow into a contemporary property with character? The team behind this house set a good example. They raised the height of the roofs, and replaced the black roof tiles and the visually dominant white cornice with red roof tiles. The same tiles – a mix of Keymer Goxhill Autumn Brown and Dark Chestnut – were also used for the façades, giving the building a monolithic appearance. Ceramic materials were also chosen for the garden: the Authentica Retro Novoton clay paver gets the job done.

Façade and roof: tile-mix of Keymer Goxhill Autumn Brown and Keymer Goxhill Dark Chestnut. Paving: Novoton BAMMM Architectuur, Waregem



Playful façade details

The characteristic façade of this building from the 1960s was given a contemporary update. The windows were given extra volume, creating a miniature balcony. Imperium Flavius was chosen for the brick, in a glued finish in random bond. The sleek Actua 10 Slate Engobe roof tile enhances the contemporary look of the building.



Façade: Imperium Flavius. Roof: Actua 10 Slate Engobe
ZIN-architecten, Leuven



Façade: Waterstruck Special Karmijnred. Roof: Plain tile
Aléonard Esprit Patrimoine Rouge de Mars. Architect Geert Billiet, Gent



Building envelope transformation

Architect Geert Billiet gave this house from the late 1960s a contemporary update. He installed larger windows and a light-filled extension at the back for the kitchen. In addition, the renovation of the façade and the roof were an important step in the transformation. For the façade, the architect chose Waterstruck Special Karmijnred in a glued finish. This brought colour and structure to the façades. The combination of these facing bricks with Aléonard Esprit Patrimoine Rouge de Mars plain tile gave the entire structure a contemporary look.

Brick of its time

With Eco-brick, Wienerberger offers the perfect solution to the challenges we face today. Or: how aesthetics, sustainability and smart use of space can go hand in hand.

See p. 122



Façade Metropolis Aula Red Eco-brick
Roof: Plain tile Aléonard Pontigny Mellow red. Iuum architects, Oostende

Many advantages

Individuals and companies are looking for more environmentally friendly materials. Wienerberger has already strongly anticipated these trends in recent years.

An extra advantage of Eco-brick is that the range also contributes to dematerialisation. Because the brick is much narrower, it allows up to 3.5 centimetres more insulation. Or you can opt to use the space gained as extra internal space, so that you can build more compactly without compromising on comfort.

The narrow girth is also a particular advantage for renovations. For example, Eco-brick enables the existing structure to be insulated from the outside and then finished with a new brick, with minimal use of external space. This is particularly relevant when space is limited due to a driveway or prevailing building line, for example. Despite its slimmer line, Eco-brick does not compromise on functionality when compared to a standard ceramic facing brick.



Touching is allowed

Eco-brick also scores high in terms of aesthetics. Thanks to the extensive colour range, there is something for everyone and Eco-brick enables you to personalise the outside of the house as well. Use one of the many bricks in the range to create the most aesthetically diverse projects. From a trendy façade to a more anonymous one, to a façade that fits in perfectly with the existing, historic streetscape. Moreover, the brick can be used for both exterior walls and interior brick walls, which reinforces the visual coherence between interior and exterior.

The Eco-brick range was recently expanded with two brand new collections: Nubilum and Avolto. Thanks to its neutral, natural colours such as white, greige and anthracite grey, the elegant Nubilum fits effortlessly into a wide range of architectural styles. The lime-washed facing bricks have a slightly rough texture and radiate pure peace and serenity thanks to their nuanced colours.

The Avolto facing brick is the perfect choice for those who want to evoke the charming atmosphere of weathered architecture. Although the bricks are brand new, they exude history and authenticity. The rough, aged finish gives the brick not only allure, but also a certain depth. Within this special range, the tumbled facing bricks have rounded corners, grains and extra rough structures. In times when tactility reigns supreme, this brick fits the bill perfectly. It is available in five shades: from red through greige to yellow and grey.

Elegant façades

With the Eco-brick expansion of the Waterstruck Special range, Wienerberger is giving its flagship product an extra boost. The long, narrow bricks enhance the horizontal play of lines on a façade. For a robust and trendy effect, you can thinly brick or glue them, but standard masonry is also one of the options.

The new colours – Alaskan White, Vanilla White, Gloom Grey, Suria Grey, Silt Grey and Atica Red – offer even more personalisation options. A unique production process is used for the Waterstruck Special facing bricks. While the clay is traditionally sanded to get the bricks out of their moulds, with this method they are pressed into a mould and rolled. A special technique with water allows them to be removed from the moulds. This is how Waterstruck Special bricks get their weathered, slightly scuffed look.

This rough appearance gives a façade some extra pizzazz. In addition, the matt, untreated finish gives free play to a host of subtle colour nuances. Because a main colour is accompanied by a series of shades, Waterstruck Special creates richer façades and walls and thus a more fascinating architectural whole. Or: how a rugged appearance can lead to an elegant whole.

Clay pavers: more than just paving

Centuries old, alive and well

Just like other traditional, natural materials, clay pavers are back again. Today, they are used not only for paving, but also increasingly for special details such as steps or a pond edge in the garden. The fact that they are easy to install and adapt perfectly to any context contributes to their popularity.

Characteristic clay pavers

–

As a natural material, clay pavers have an impressive list of attractive features. Consisting of clay, minerals and sand, they are free of colouring agents or topcoats, making them colourfast. They are also resistant to frost, UV radiation and other weather conditions.

These outstanding characteristics ensure that clay pavers will effortlessly stand the test of time. What's more, they only get more beautiful. Their authentic character lifts every environment to a higher level. If they do get demolished, they are almost always reused. Or: how this age-old material also adapts effortlessly to the contemporary principles of circular economy.

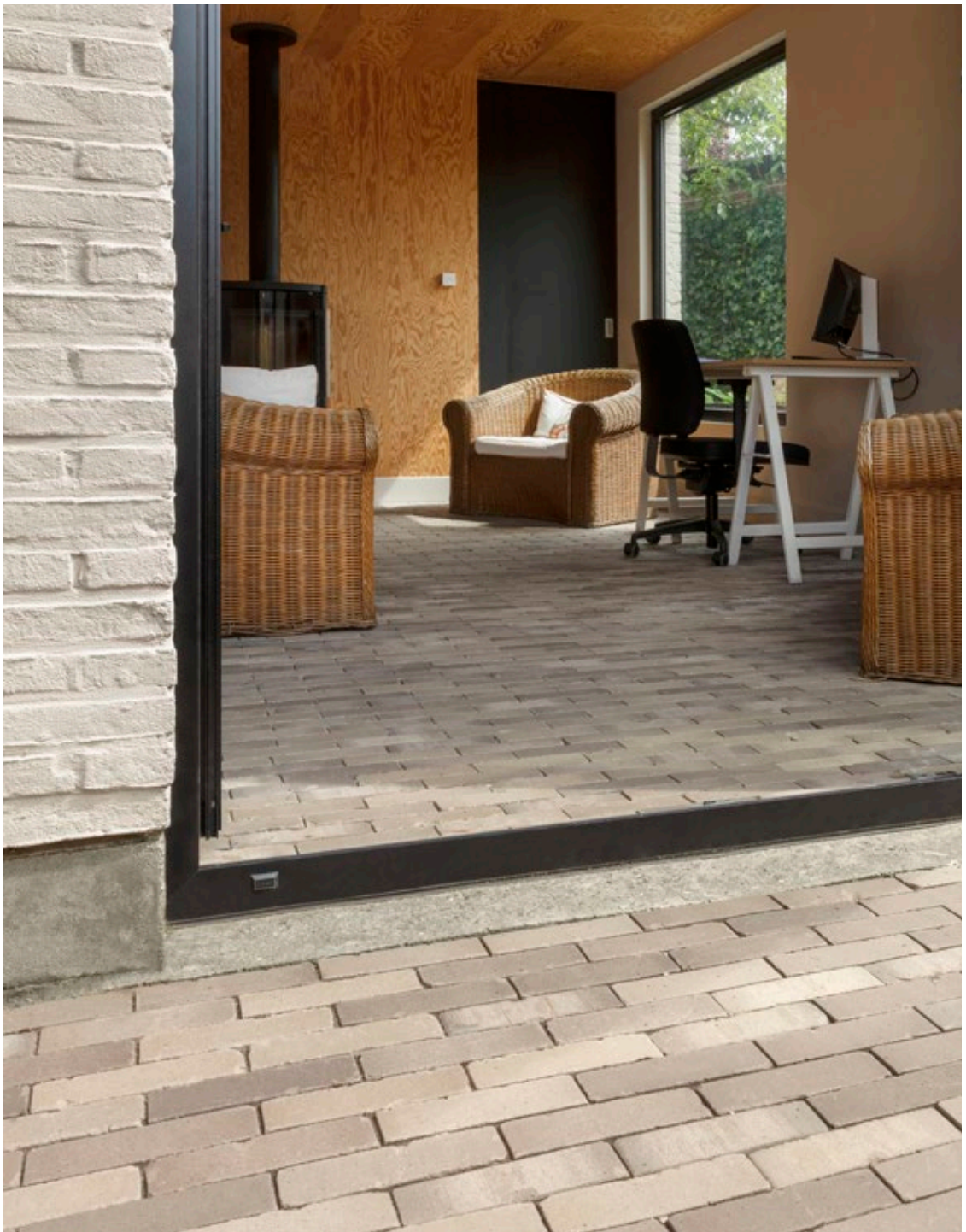
Signage

–

This project demonstrates that signage does not necessarily have to be accompanied by glaring white lines. The two vertically laid strips of clay pavers also subtly indicate the boundaries of the parking area itself. An extra sustainable benefit in this project is the Aquata clay pavers: thanks to the extra-wide six-millimetre joints, which are filled with pebbles, water can gradually seep into the soil. This also prevents the growth of mosses, algae and weeds in the joints.



Aquata Brown. Avantgarden, Wijnegem



Lotis. Otium, Brakel



Interior and exterior

—

With the renewed popularity of authentic, natural materials, terracotta floors are also making a comeback. Clay pavers fit perfectly into this picture. By laying the same clay pavers both inside and outside, a fascinating visual relationship between the rooms can be created.

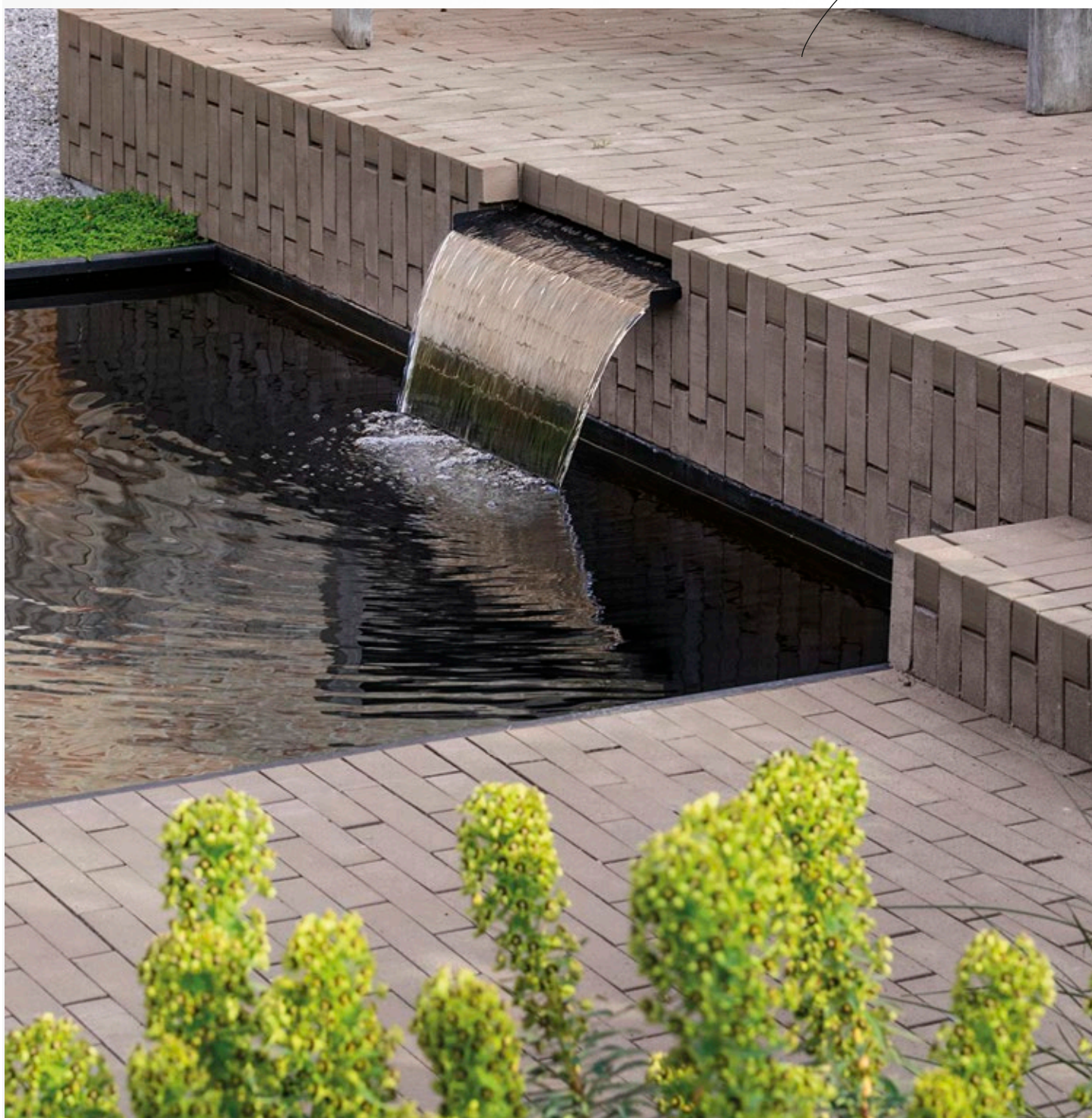
This contributes to the aesthetic of the whole. Because they are wear-resistant, inert and extremely strong, clay pavers are an authentic and particularly durable material.

Horizontal *and* vertical

—

This project makes it clear that clay pavers fit perfectly in a sleek, contemporary city garden. The beautiful grey bricks form the perfect framework for the lively water feature, and can be combined perfectly both vertically and horizontally. Because the clay can be glued to the substructure, they can be used both for the finish of the fountain and the step. This results in a neutral, but at the same time rhythmic and elegant continuous whole. A real treat for the eye.

See p. 58



Triton. Exteria, Melle



Hortus Althea. janenlies. tuin en landschap, Putte

Ideal pool companion

—

This pool shows that you can go in many directions and styles with clay pavers, which immediately evoke the authenticity of the countryside. Because the clay pavers are produced using the hand-forming process, they have a weathered appearance. The fact that they are resistant to chlorine, detergents and frost makes them ideal poolside companions. They require little maintenance and retain their beauty for a very long time. Another great advantage in this setting is that they do not become slippery when wet and are particularly pleasant to walk on with bare feet. The fact that they do not heat up too much in summer is a nice bonus.

The details make the architecture

Creativity benefit

–

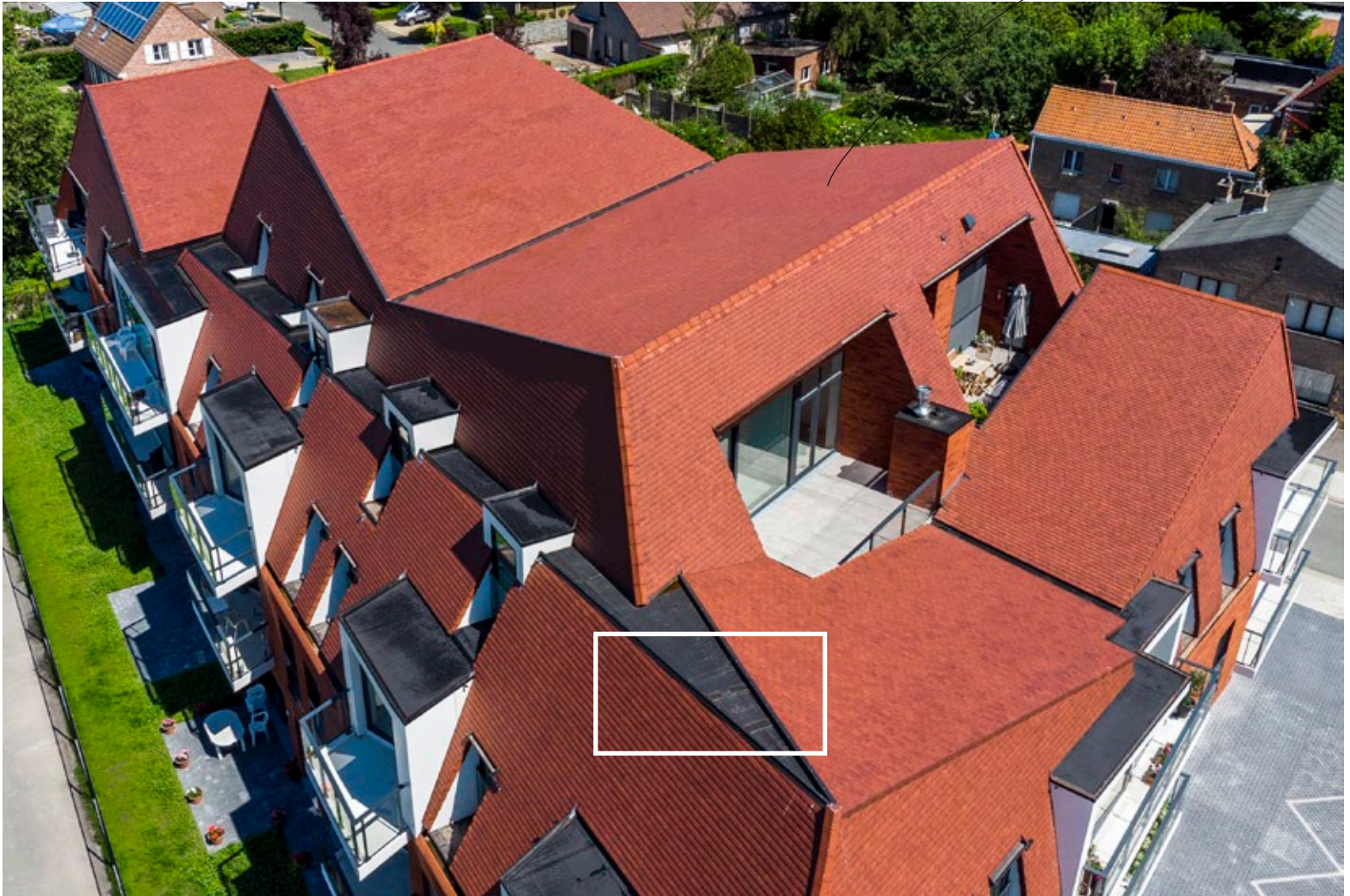
The wide range of building materials allows for much greater personalisation of a project. Ceramic materials allow creativity free rein and allow for characteristic detailing to be played with.

Unlike classic brick architecture, where different materials were chosen for the walls and the roof, technical innovations make it possible to use the same material for both, thus creating a monolithic whole. The wide range of colours offers even more options for creating a strong, contemporary architectural concept.

In addition, the alternation of vertical and horizontal bricks creates a dynamic rhythm in a façade or the transition between pitched roofs and façades can easily be bridged using ceramic materials. Thanks to masonry in half-open bond, claustras are created, which on the one hand offer more privacy and at the same time provide an interesting interplay between interior and exterior.

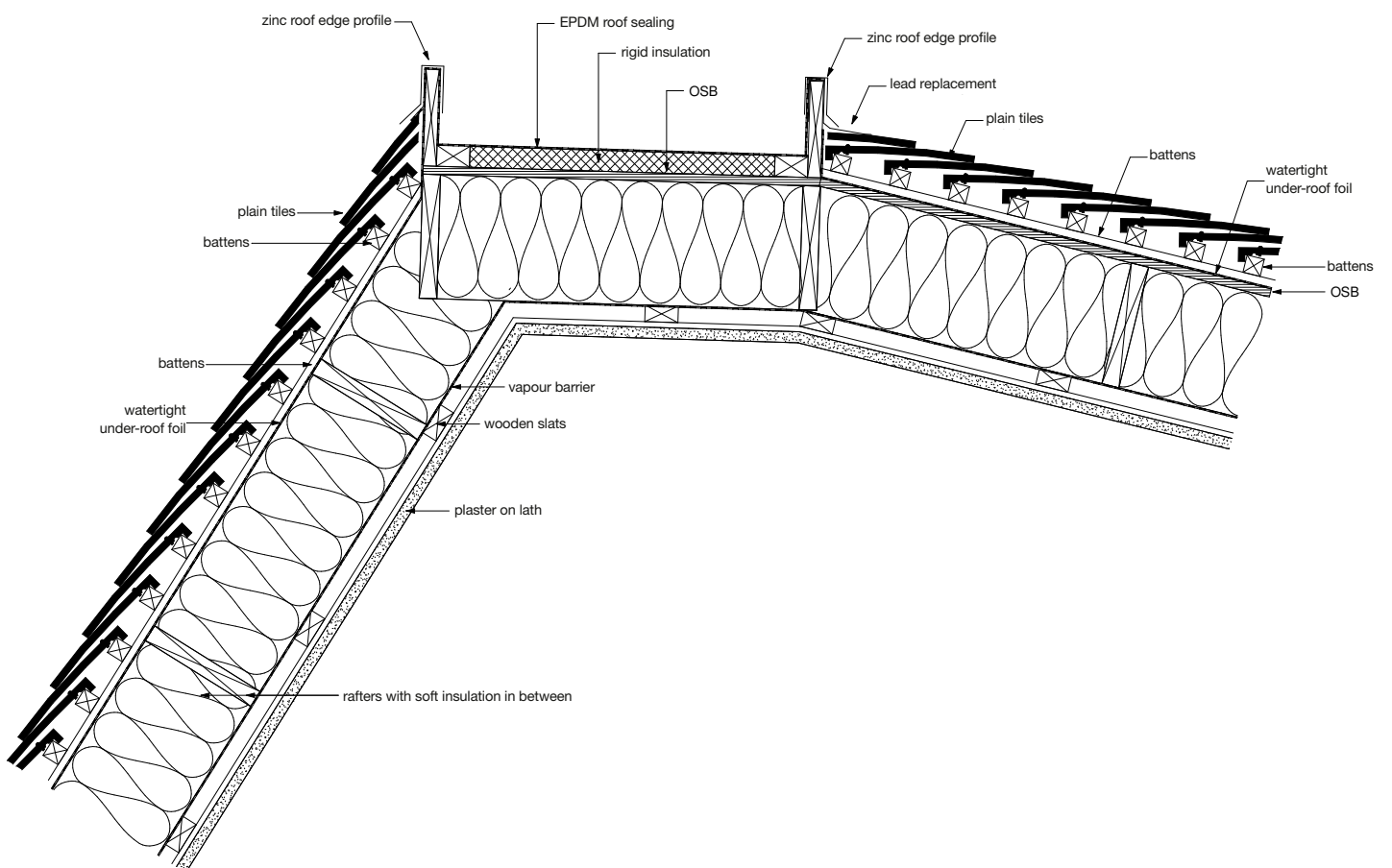
At the same time, the choice for aesthetic detailing and a not too complex technical implementation can go hand in hand. New materials and processing techniques, such as gluing bricks, also contribute to the contemporary appearance of a project. Correct implementation of the aesthetic details guarantees the long-term beauty of the project and avoids problems with the maintenance or use of the building.

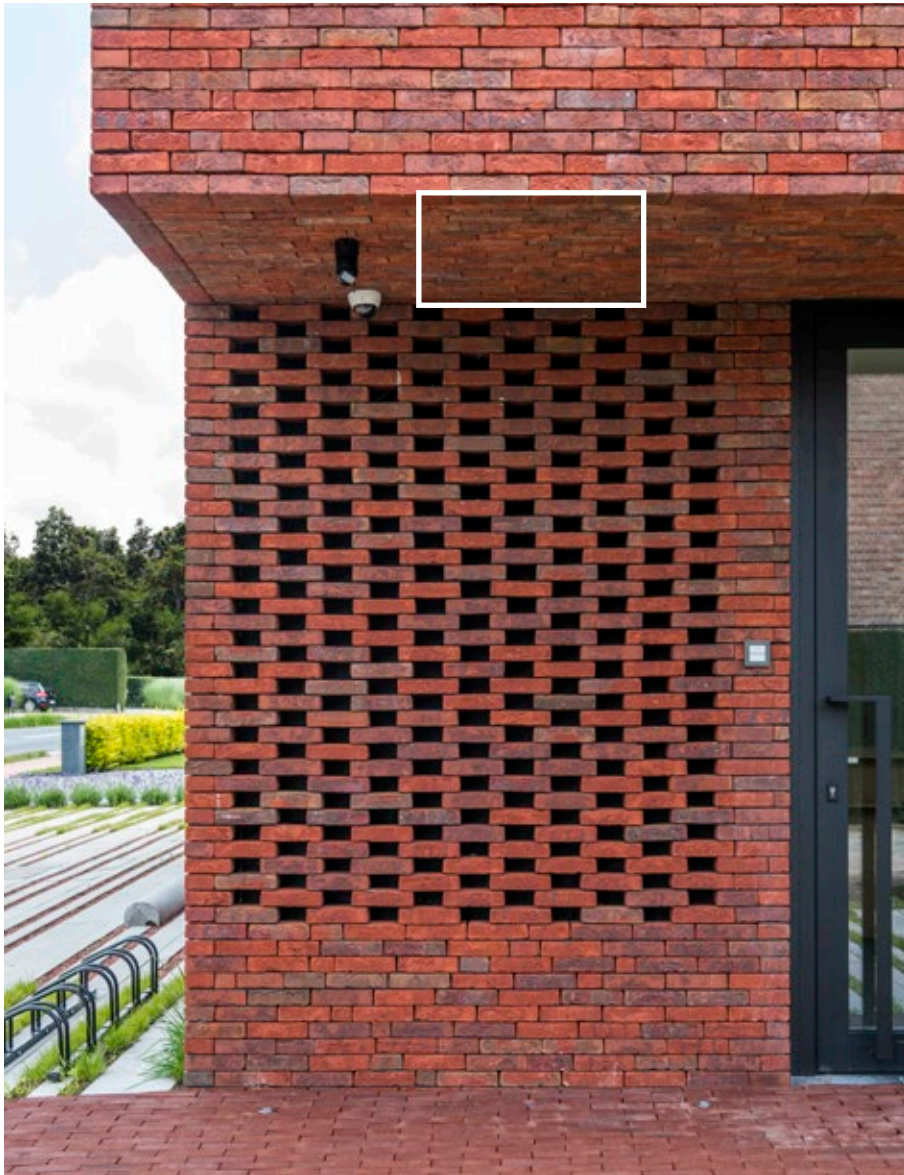
The strength of an architectural concept is closely linked to the choice of materials and the detailed way in which they are applied. Or to put it in the words of Charles Eames: “The details are not the details; they make the design.”



Façade: Elignia facing brick. Roof: Plain 301 Smooth Amarant. ARoMi Architecten, Middelkerke

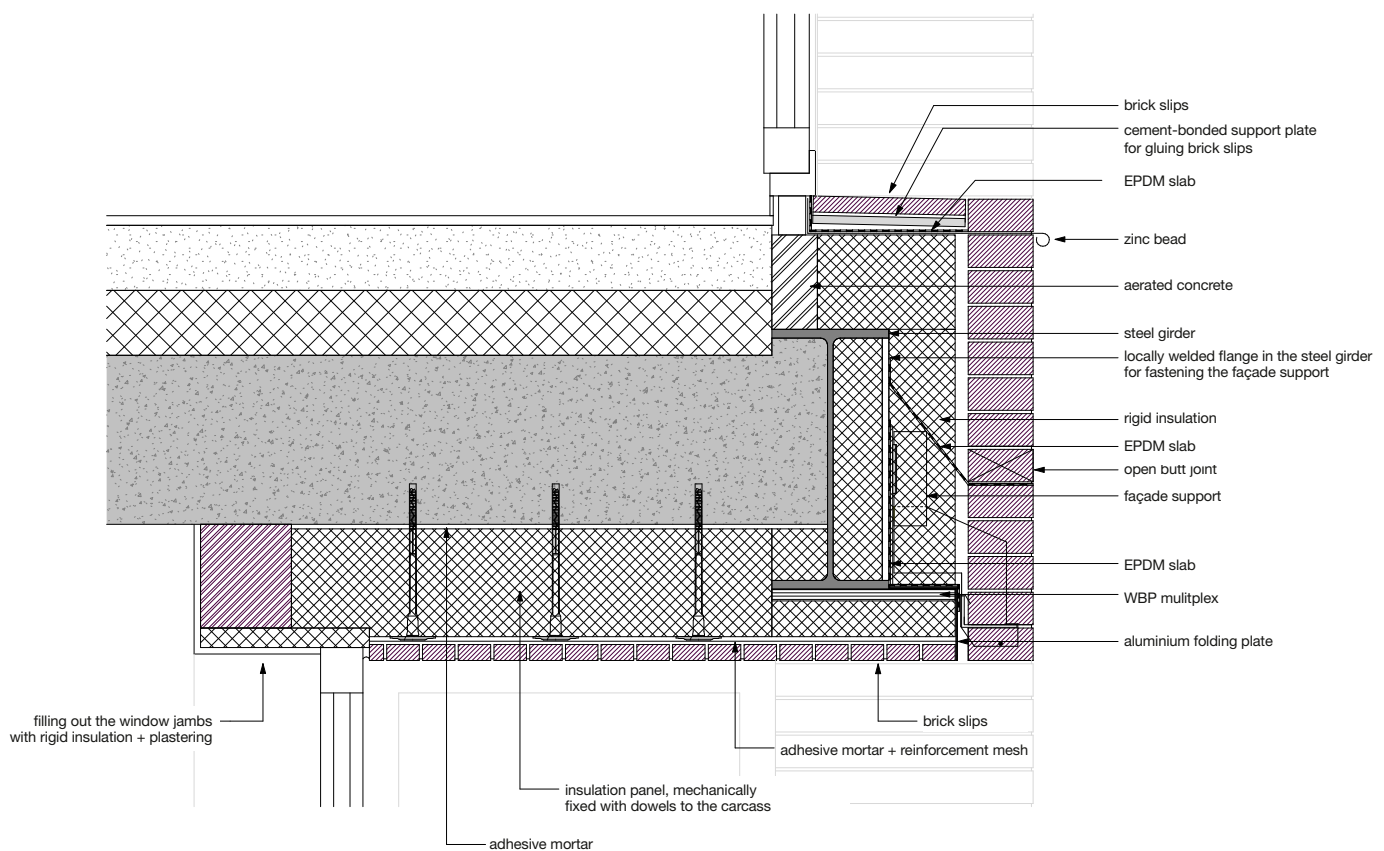
Detail of a vertical section through the roof



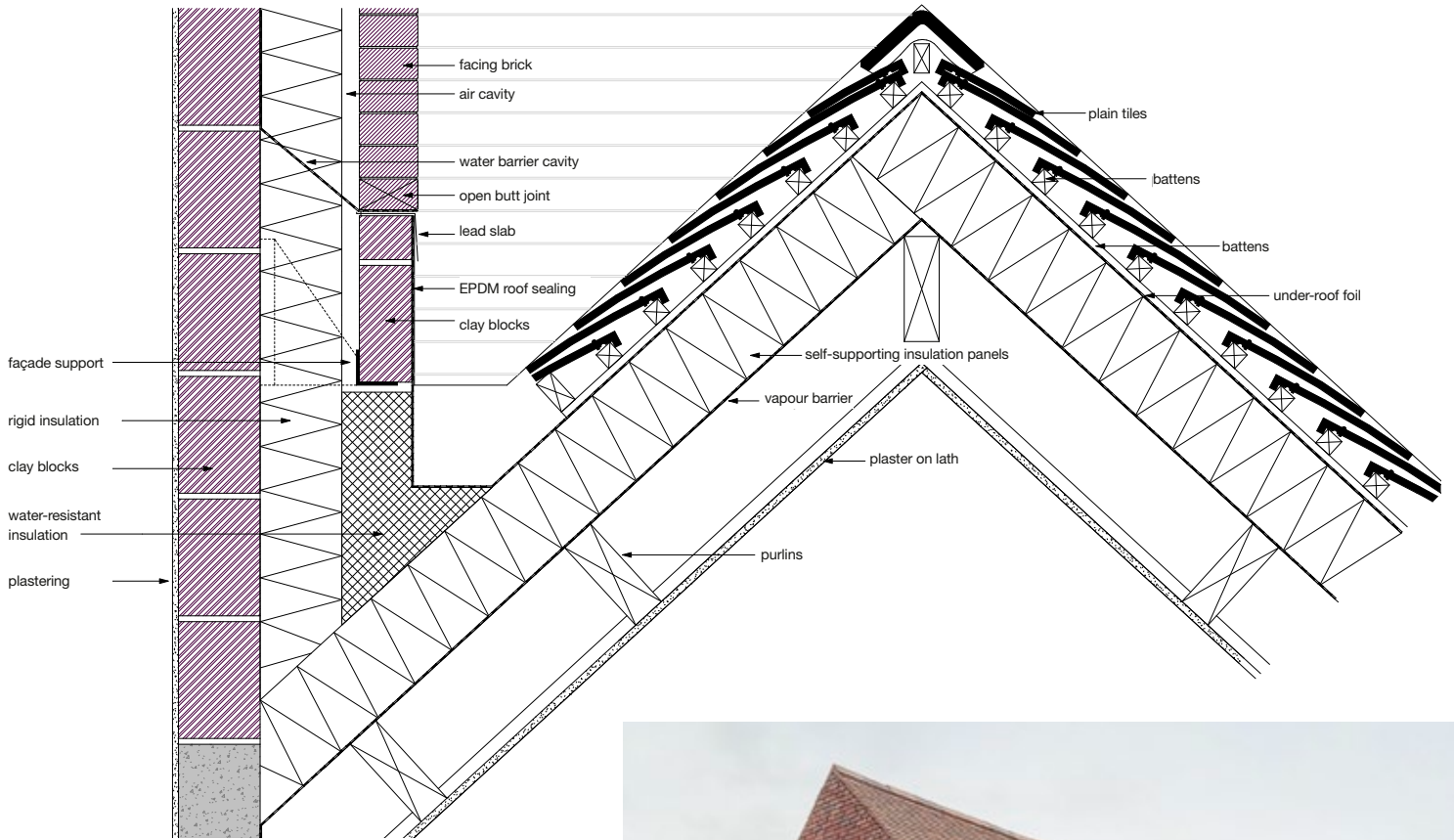


Brick-mix Iberia Galicia, Iberia Navarra, Iberia Andalucia and Iberia Asturia
 Architect Eva Doods, Keerbergen

Detail of a vertical section of the façade crossing



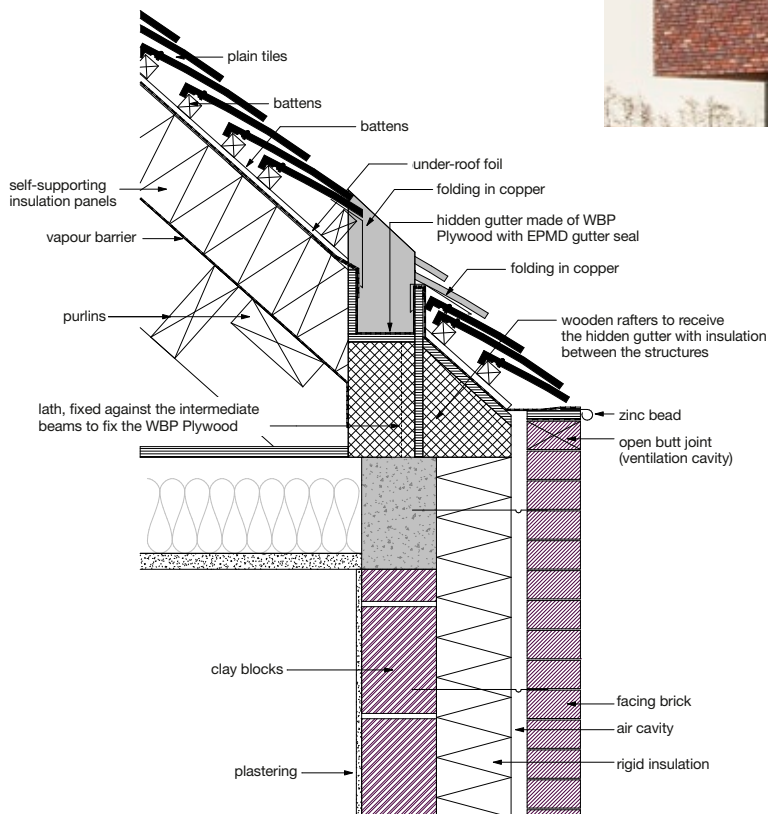
Detail of a vertical section through the façade and the ridge



See p. 120

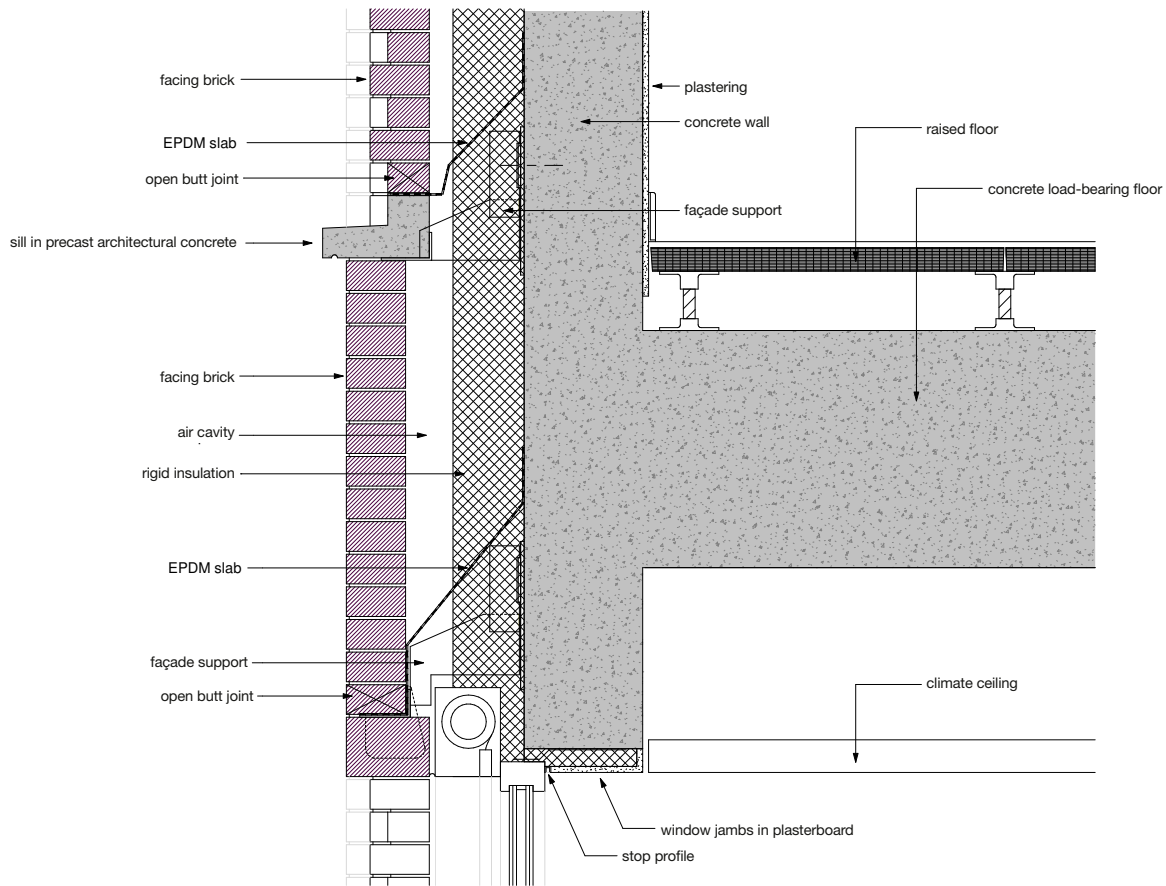


Detail of a vertical section through the recessed roof gutter

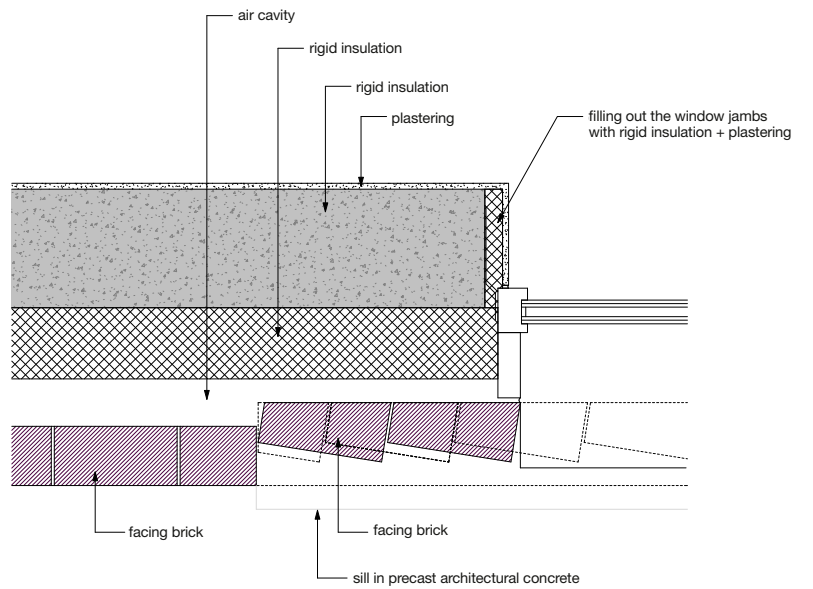


Façade: Hectic
 Roof: tile-mix of Aléonard Esprit Patrimoine
 Lichen Green, Kent Red and Vineyard Black
 i/o architecten, Sint-Niklaas

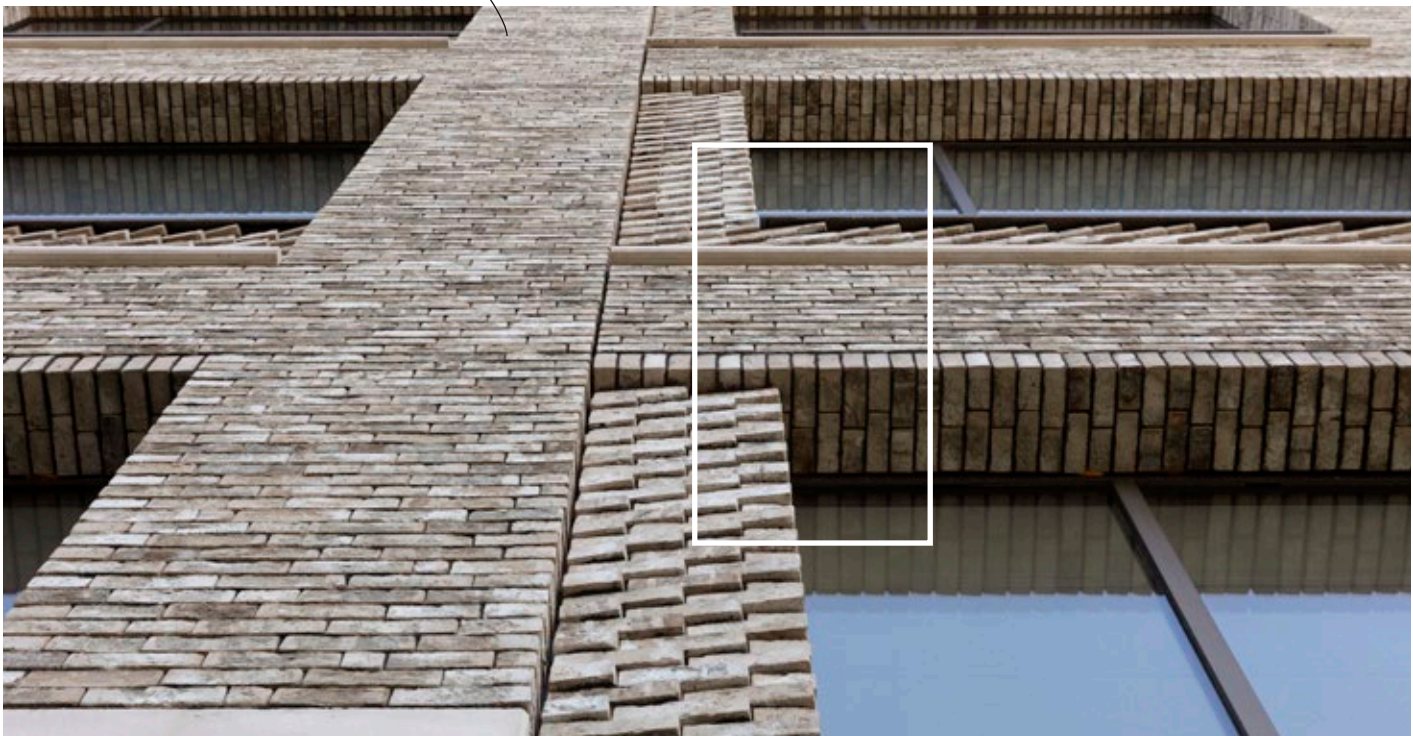
Detail of a vertical section through the façade



Detail of a horizontal section through the façade



See p. 34

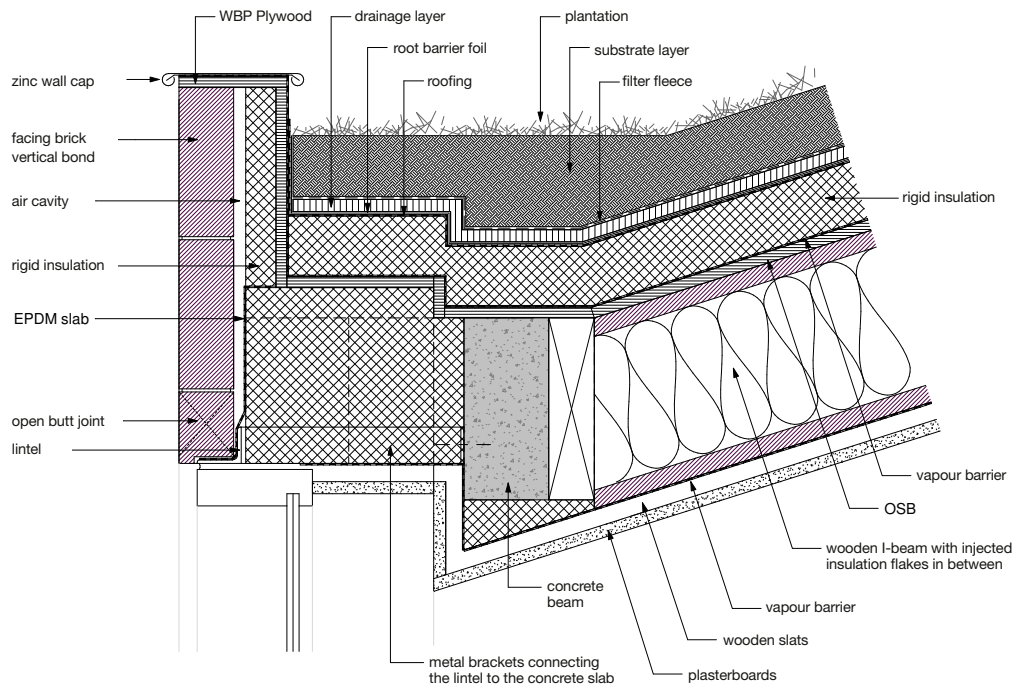




Imperium Flavius. MARKLAND architecten, Kortrijk

See p. 28

Detail of a vertical section through the roof







Projects that inspire to create

Recent achievements in the spotlight

We have selected projects for you that have been built with our materials. From ultramodern or renovated family homes, to imposing (public) buildings and residential care centres, to complete subdivisions! These diverse examples of architecture give you an idea of the wide range of possibilities of our ceramic materials.

“Form and function combined optimally”

A dynamic façade

The dynamic character of this house is emphasised by the large and constructively required support columns. The column at the front forms a guide line to the covered entrance. The one at the covered terrace is a cosy outdoor fireplace. In this way, form and function are optimally combined and it gives the residents some privacy.

Behind the contrasting, flat façade cladding is an indoor garage, with a car lift to the basement. The L-shaped interior, with spacious living kitchen and cosy bar, opens up completely to the rear and side gardens. The living experience is complete.

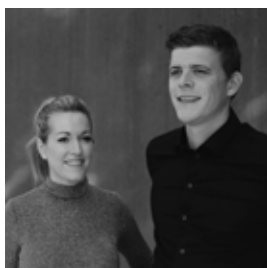
Nuances of red and purple

The façades were built using a brick mix of Linaqua Viola and Linaqua Vino. This results in beautiful purple-red shades. However, there are still enough earth tones present to allow the house to blend nicely into the surroundings.



Brick-mix of Linaqua Viola and Linaqua Vino

© Photography: Steven Massart



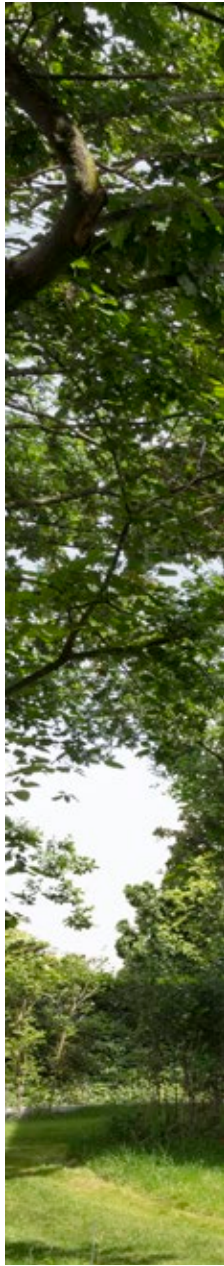
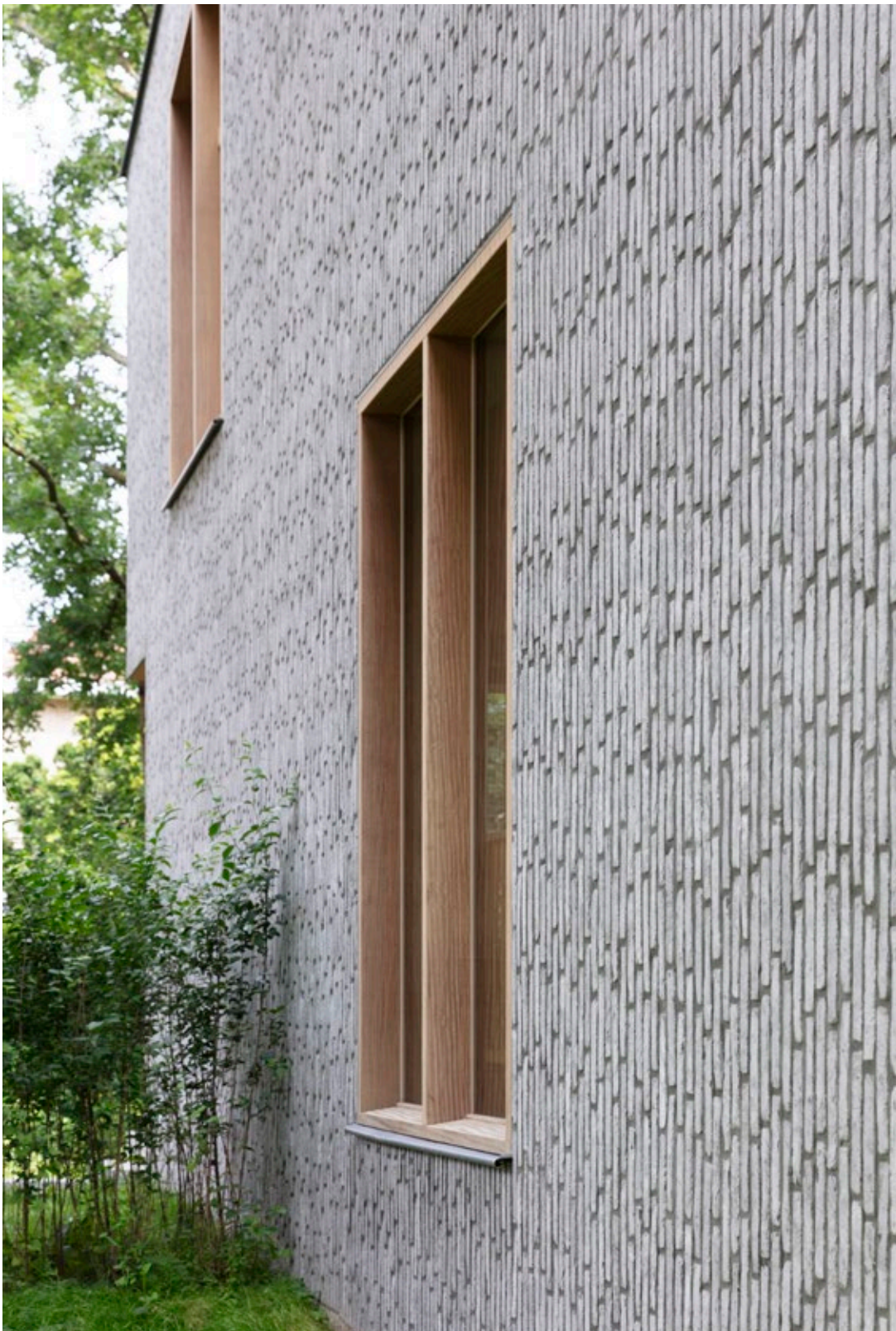
studio segers architecten,
Danielle Joosten and
Raf Segers, Maaseik







"Minimal impact on the site"



MARKLAND architecten,
Kortrijk



Imperium Flavius

Compact house in a wild park garden

This NZE-home with compact, square footprint is located in a beautiful wild garden next to a tree nursery. Its impact on the green surroundings was kept to a minimum. The property is also well below street level, which led to the choice of a split-level. The diagonal ridge line breaks up the image of front, side and back and makes all sides equally important in relation to the garden.

Vertical brickwork with character

The house is located in a wild park garden with a very unique character. In order to give the bulky house an equally strong character, vertical brickwork was used with the Imperium Flavius. This brick with character is processed roughly with a rough, dark, wide joint.



Volumes moved around

The original plan of the house included three prominent shaft lines, which were also used as a starting point for the new house. The lines divide the design into four zones with the following functions: eating, living, cooking and reception. The four volumes were then moved around. This creates interesting intimate outdoor spaces, including two terraces, a green patio/indoor garden and an alcove that accentuates the entrance. This dynamic ensures a constant interaction between interior and exterior.

It was also decided to raise the ridge and cornice to make space for bedrooms, bathrooms and an office space. This transformation translates into the well-known archetype of the house typology: a gabled roof on a ground-floor volume.



Rugged and natural view

To accentuate the monolithic archetype, both the façade and the roof are finished in the same material: a tile mix of Keymer Goxhill Autumn Brown (92%) and Dark Chestnut (8%). This is because of their versatile installation options, but especially because of their rugged and natural look. This weathered impression creates a timeless character that feels natural and does not attract unnecessary attention. The rough exterior contrasts sharply with the sober but warm interior.

BAMMM Architectuur,
Sebastien Dhondt, Avelgem

*“Rugged shell
in symbiosis with
the environment”*



Façade and roof: tile-mix of Keymer Goxhill Autumn Brown and Keymer Goxhill Dark Chestnut. Paving: Novoton



Optimal connection between work zone and living space

The assignment was to design a practical house with a unique appearance. The latter was very important because the house had to serve as a business card for the client, an interior designer. The view of the park in front of the property was preserved, but sufficient screening was provided for the nearby apartment building.

At the front, the house was designed to be quite solid. At the back, there is a lot of connection with nature through the numerous windows. Both to the left and right, light and views are created through various cut-outs. On the ground floor, there is half a patio with a pond, while on the first floor there is a rectangular incision on both sides. The patio provides optimal connection between the work zone and the living space.

A facing brick that tells a story

Various façade materials were considered. Eventually the choice fell on the Cassia facing brick. The rugged aesthetic appearance and the production story contributed to the choice of this characterful stone. It was decided to connect the corners of the façade and not mitre them.



De Lathauwer-Van Goethem,
Leentje Van Goethem, Aalst



Cassia

*“The house as
a business card”*





Brons Rustical



POLO Architects,
Mauro Poponcini and
Patrick Lootens, Antwerpen

Height differences cleverly bridged

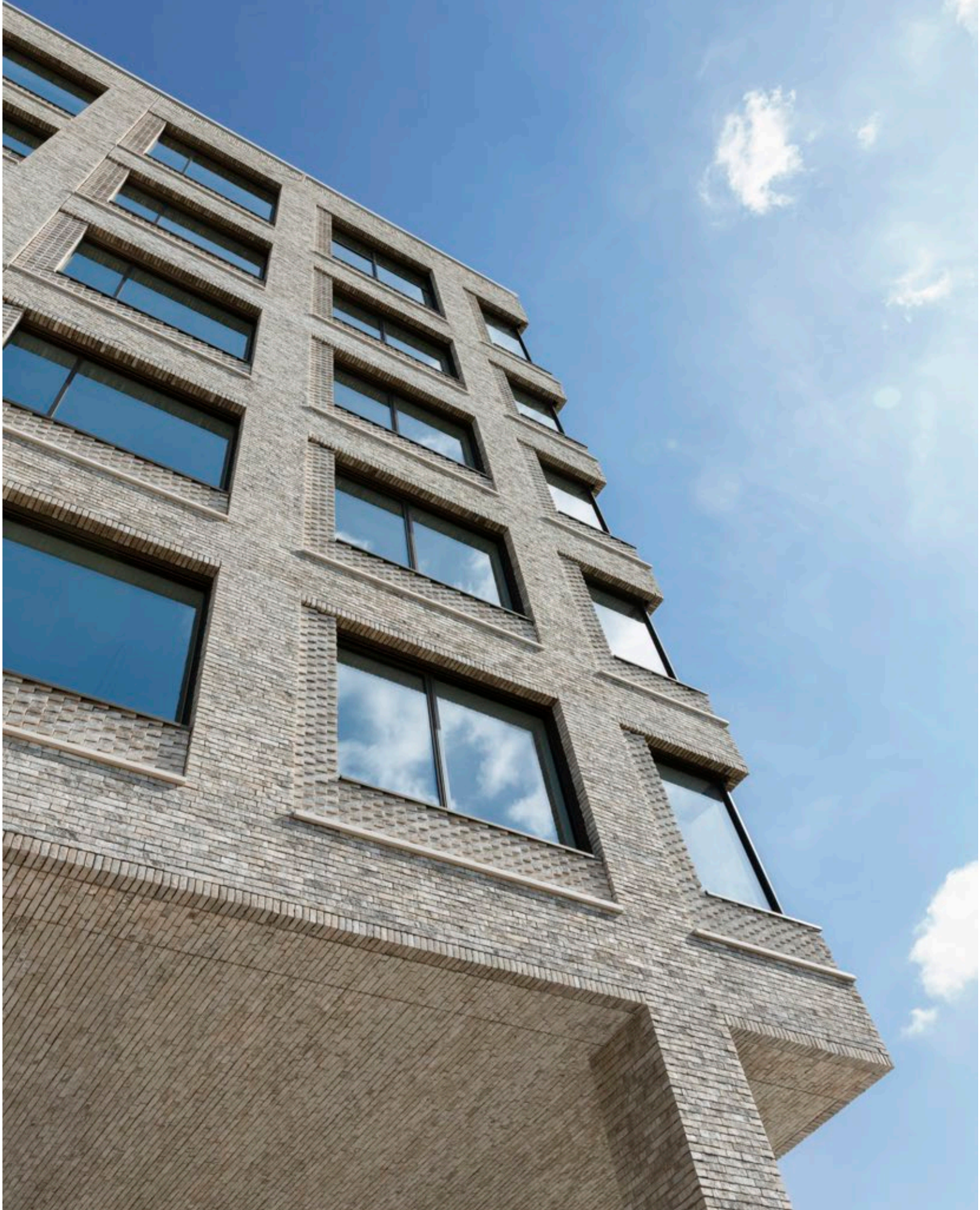
This office building was built in the Benelux Park in Kortrijk. It is located on a site with pronounced height differences and in the vicinity of a pond. In order to bridge the differences in height, the ground floor was divided into two levels with another four floors above. A large, green patio was cut out in the middle. This provides light and air and structures the internal workings of the office building.

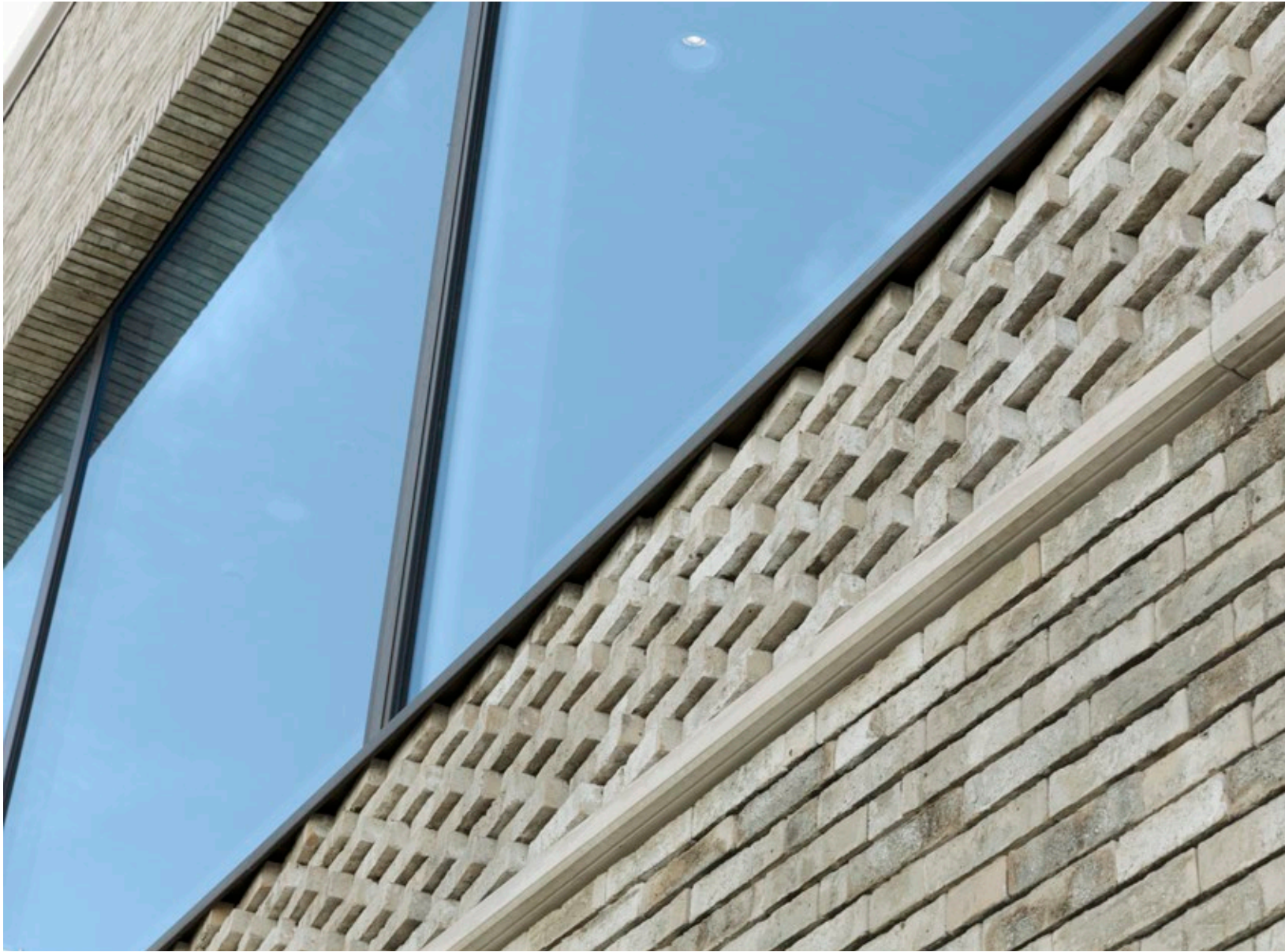
The building, which has a very robust, almost abstract appearance from afar, changes its appearance as you approach. The robustness gives way to subtlety, refinement and detail. The façade is tightly rhythmised by the windows, accentuated by a vertical and horizontal strip of brick masonry in a striking mouse-tooth pattern.

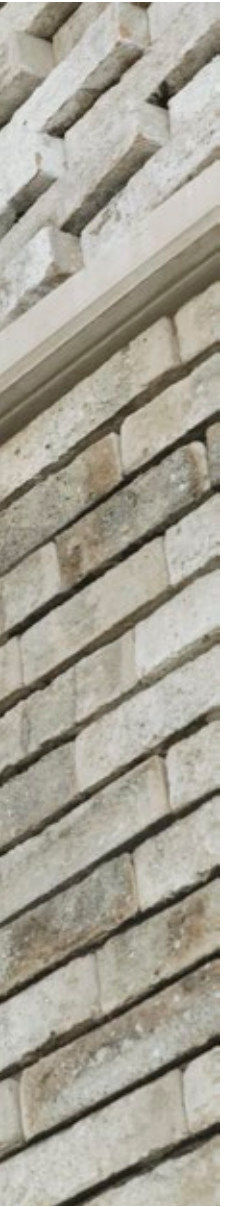
Monumental appearance

The building had to be monumental, prestigious and visible from afar to mark the beginning of the business park. The façade was finished with Brons Rustical, a yellow handmoulded brick with white and green nuances. The strips of the mouse-tooth pattern, in which the bricks are placed at an angle of 75 degrees to each other, are very striking. The relief in the façade details creates a special play of light and shadow, with constantly changing colour hues.

"Flexibility focused on the new way of working"







The side wall as a solar side

This contemporary villa in a sleek brick architecture is located in a green and wooded area. Although the orientation of the property was not optimal, the architects did everything possible to bring in as much light and sun as possible.

A number of modifications were made, such as the precise positioning of the carport, the creation of a staggered volume and the enlargement of the living space. In this way, the house was turned towards the south-facing side wall, as it were.

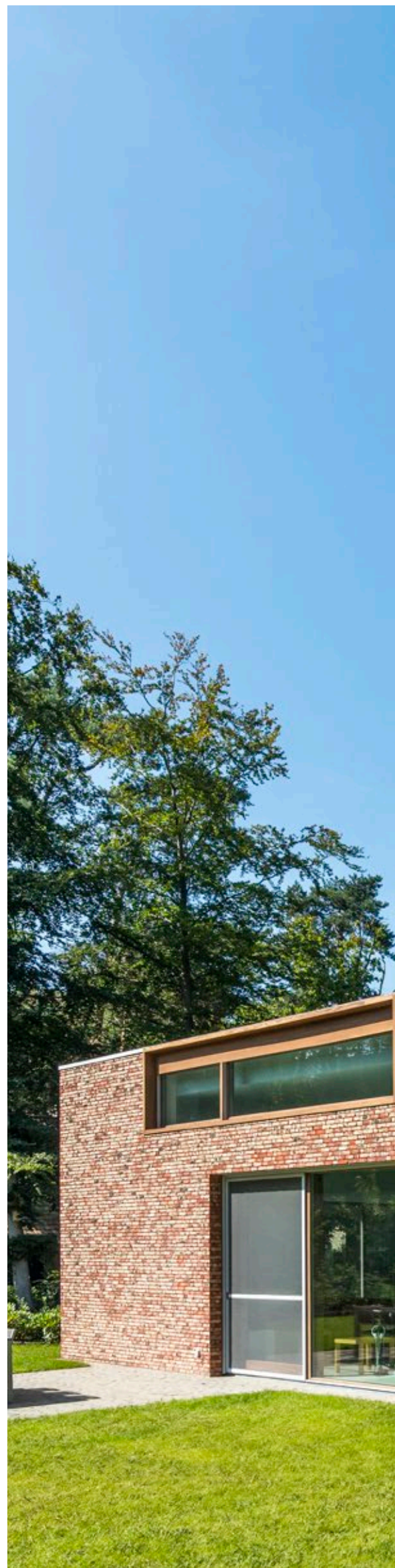
Massive, yet playful and natural

The façades were built using Colorada, a natural, rugged-looking brick with beautiful shades. Together with the wooden joinery, this ensures that the house blends into its natural surroundings, as it were.

To soften the massiveness of the house somewhat, a skirting effect was created in the façade by working with a number of planes and strips in an alternating recessed and protruding masonry bond. This also creates a playful and airy effect.



HASA-architecten,
Sarah Flebus, Muizen



*"It's all about
the light"*









“Roof and façades in the same striking colour hues”



Façade and roof: tile-mix of plain tile 301 Smooth Anthracite, Natural Red, Amarant and Rustic

Distinctive character in the streetscape

The intention was for this renovated house to fit in on the street side with the brick architecture of the adjoining houses, but still give it a character of its own. Hence the decision not to work with a classic brick but with roof tiles in a mix of different colours.

The sleek look of the house is accentuated by a bay window with black aluminium joinery on the front façade and by the invisibly integrated gutters. The client's office is located on the top floor and has two large windows facing each other and a roof garden at the back.

Sleek but playful effect

The brick façades of the adjoining houses had accents in a different colour. As a playful and contemporary interpretation of this, the client decided to also play with colour accents. For this purpose, a tile mix of 301 plain tiles was used: 10% Anthracite, 10% Natural Red, 30% Amarant, 50% Rustic. The result achieved is both sleek and playful.



Waterstruck Special Grey

"Hidden behind an old barn"



© Photography: Laurent Brandajs



Free circulation between interior and exterior

On a plot bordering a vulnerable nature reserve, a U-shaped farmhouse makes way for a contemporary new construction. To keep the view from the street as rural as possible, the old barn on the street side was preserved with the contemporary new home behind it.

The open living spaces reveal a panoramic view of the rear garden through the uninterrupted glass section at the back. By cutting a section out of the building volume, a covered terrace was created. In order to prevent overheating, an overhang was used as well as special screens one meter in front of the windows, allowing free circulation between interior and exterior when the windows are open.

Horizontal lines

The façade was designed in Waterstruck Special Grey. It was jointed tone on tone to create a monolithic effect. The long, flat facing bricks also reinforce the horizontal character of the house. To give the block-shaped volume a certain elegance, volumes were subtly cut out in various places, giving the whole a more playful character.



BK Architecten, Christophe Vander Eecken, Oudenaarde







Hortus Althea

Retaining the 'square' effect and the 'vistas'

This specific assignment included the redesign of an inner courtyard at a U-shaped renovated farmstead and the incorporation of a swimming pond. The inner courtyard had a slope of almost 2 metres and all accesses to the stables had to remain accessible to vehicles. In addition, care was taken to preserve the 'square' effect of the inner courtyard.

By erecting a wall and visually closing off the U-shape of the farmstead, the character of the inner courtyard and the farmstead was reinforced and the gradient reduced somewhat. All this without losing the 'vistas'. In fact, these are reinforced by the longitudinal implantation of the swimming pond in the direction of the valley.

The character of an authentic clay paver

Hortus Althea was chosen for the clay paver. It was immediately clear to the architects that this hard baked paver optimally approximates the character and colour shades of the 'old paving'.



janenlies. tuin en landschap,
Putte





"Rebuilding a courtyard with a swimming pond"



A photograph of a modern brick building. The building features a mix of solid red brick and perforated brickwork. The perforated brickwork is used for a balcony railing and a lower wall section. The solid brickwork is used for the main walls and a taller section on the right. The sky is a clear, bright blue. In the foreground, there is green grass and some small plants.

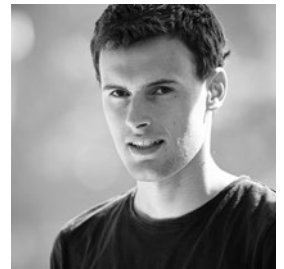
*“New social housing
development with
an eye for playfulness
and detail”*



A different approach to the phenomenon of ‘allotment’

This project, with quality living as its basic premise, comprises 28 social housing units. New ways of dealing with ‘the allotment’ were thoroughly considered beforehand, resulting in compact homes with optimal orientation and a private outdoor space. The new development adjoins an existing residential area and is part of a larger allotment project.

The 16 owner-occupied dwellings were linked in pairs and have a saddleback roof. The 12 rental homes with pitched roofs were conceived according to the see-through principle. They respond to the rhythmic pattern of the owner-occupied homes with a modest strip of housing. Due to their east-west orientation, the rental flats were built in the middle of their plots and provided with an equivalent front and back garden. Both the owner-occupied and rental homes have their own private outdoor space and a (covered) car park.



Architecten Groep III,
Kobe Pillen, Brugge

Playful effect in the streetscape

A brick-mix of Elignia facing bricks was used. The bricks display a nuanced warm-red colour palette, each with its own accent. The alternating bricks allow the houses to be subtly distinguished from each other. Claustra accents in the façades create a playful effect in the streetscape.



Façade: brick-mix of Elignia facing bricks. Roof: Actua Multiblend



Imperium Flavius Iluzo

Views on two sides

Within walking distance of the municipal nature reserve of Bourgoyen-Ossemeersen and close to the centre of Ghent, this multi-family house was built on a neglected site. Because it is a corner building, it allowed for the best possible views on two sides.

Incisions were made at strategic places to create an indoor terrace and a covered entrance. The walled terraces were placed on the corner and the use of claustra creates both security and views. Each flat is bright and has a view of the green inner garden.

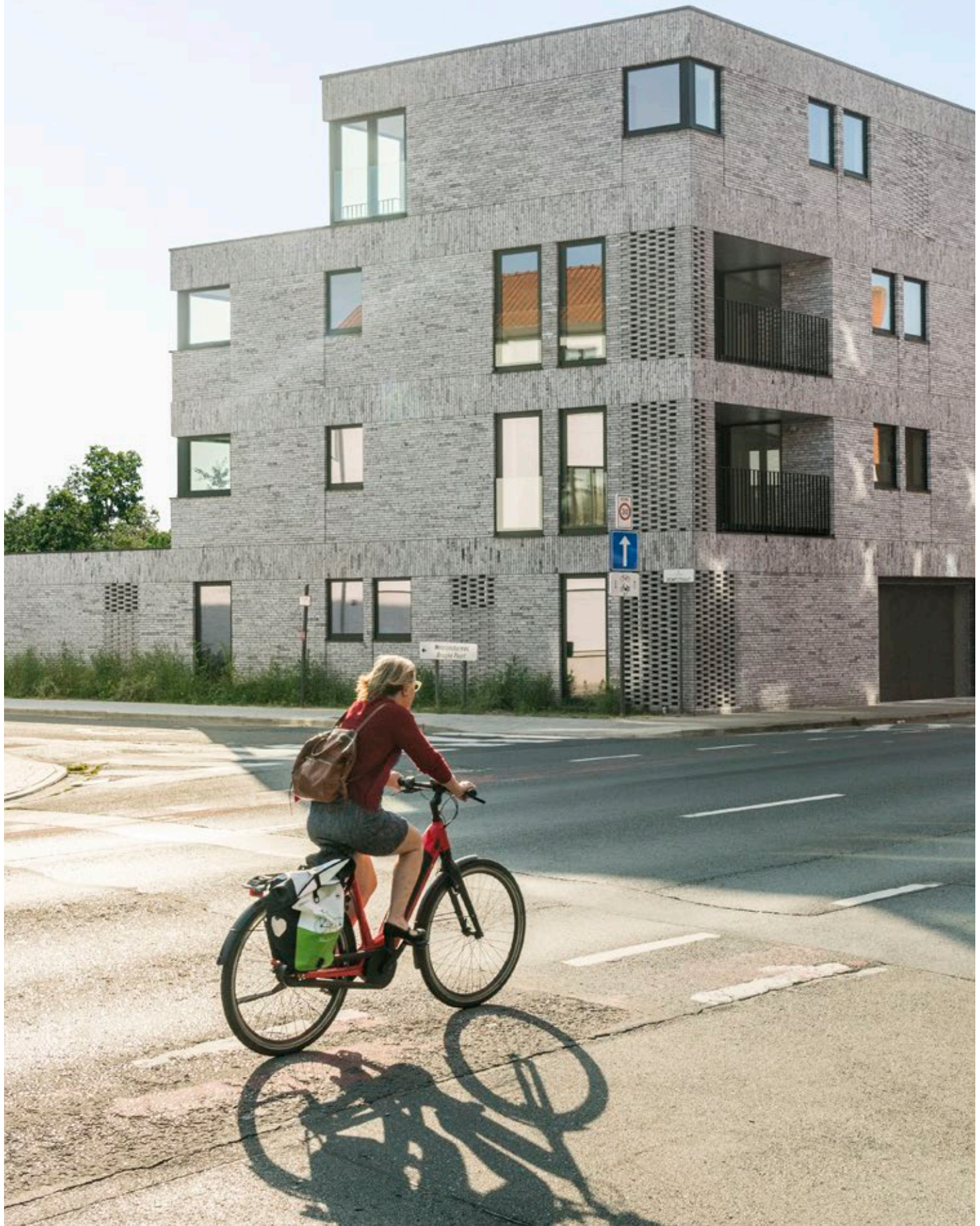
Powerful masonry bonds

The Imperium Flavius Iluzo was chosen; a grey brick with sufficient character to strengthen the different masonry bonds. The façade brick was bonded in a random bond. At floor level, the bond was placed vertically to make these lines visible in the façade view. The horizontality was somewhat broken by strips of vertical brickwork, which were reinforced by claustras.



Vertongen Architecten, Gent

*“A façade with an attractive form language,
in function of its use”*





Brick-mix of Patrimonia facing bricks



Domesticity on a large scale

‘Domesticity’ was central to the design of the master plan for the OCMW residential care zone in Merelbeke. Given the scale of the assignment, a local service centre, residential care centre with 142 resident rooms, day care centre and 5 annexed flats, this was not an easy task. Moreover, the commissioning residential care organisation was not ready for new forms of residential care and the existing infrastructure had to be maintained until the new replacement building was put into use.

The design team modelled 2 volumes along the edges of the fragmented site, so that the (care) accommodation was ‘on the street’ again. This opened up the central space between two virtually parallel streets, making it greener, more permeable and more conducive to neighbourhood relations. The folding of the long building wings, the differentiation of the window openings and a covered walkway in the rhythm of the rooms broke the collective large scale and gave the whole a controlled dynamic on a more domestic scale.

A warm palette with a suggestion of recuperation

The materialisation of the brick building envelope then proved to be the most difficult exercise. It became a search for the right format, texture and colour shades with which a warm palette could be composed with a suggestion of recuperation. A palette that allowed subtle nuances in shading depending on the orientation of the façade. A brick that allowed for claustra relationships.

The brick-mix of Patrimonia facing bricks, with its mix of orange-red tones, yellow-beige nuances and dark brown hues, produced the desired effect. The slightly larger size of the bricks also created the desired visual effect of scale reduction.

With the choice of placing in barrier mortar, the contractor was able to create a great story.



GWM architecten, Gent

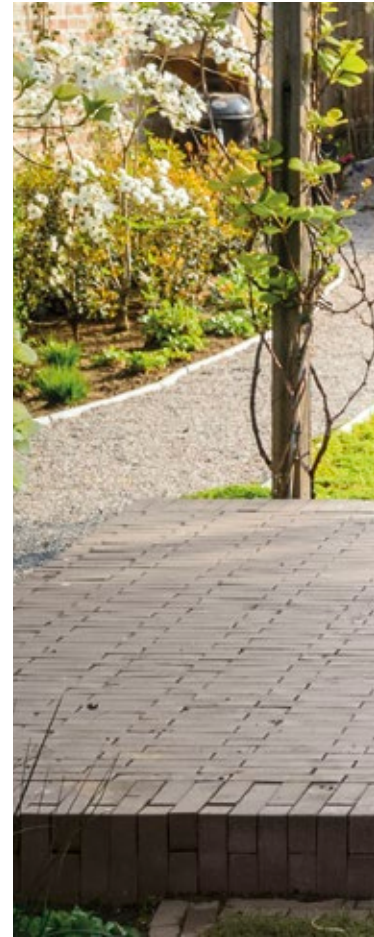




"Controlled dynamics at a domestic scale"



Triton



Logical, natural and soothing

This town house with its existing terrace was situated higher than the garden. As a result, you looked out over the garden from the generously glazed living areas. The residents wished to retain the landscaped terrace but wanted to add a swimming pond and a garden pavilion that could also serve as a quiet place to work from home.

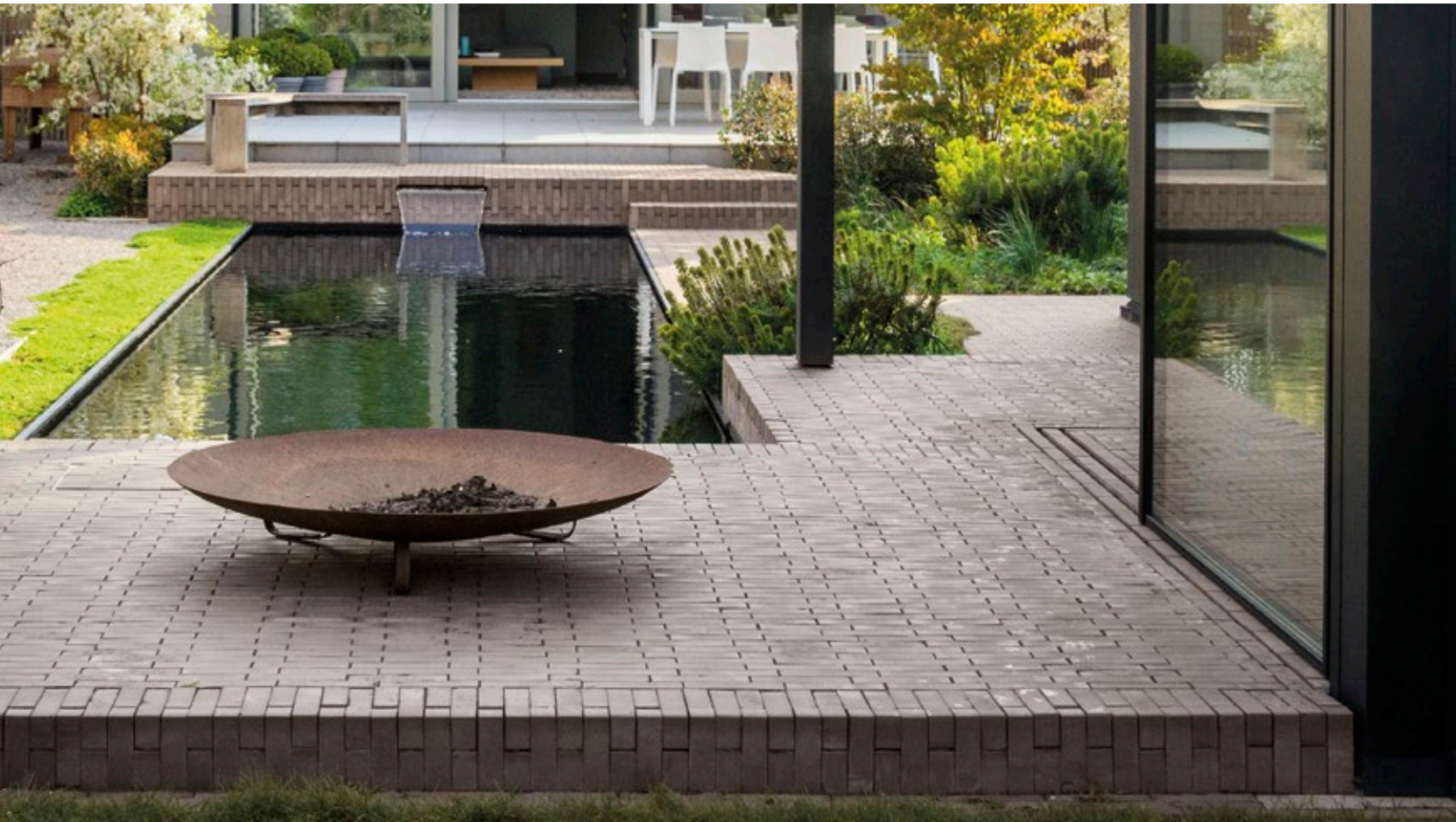
A kind of podium was built in clay pavers next to the existing terrace, bordered at the sides by a green strip of shrubs, perennials and small trees. From the living space, the view is much more soothing than before.

Harmony of grey hues

The new terrace area was designed using Triton clay pavers. With its soft colour, it perfectly matches the black joinery and the existing light grey tiling of the original terrace.



Exteria, Thomas
Vander Auwermeulen, Melle



*"Flowing connections between
indoors and outdoors"*



Façade: Elignia facing brick. Roof: Plain tile 301 Smooth Amaranth



ARoMi Architekten,
Middelkerke

“Multi-family house with emphasis on more”



Interlaced polygons

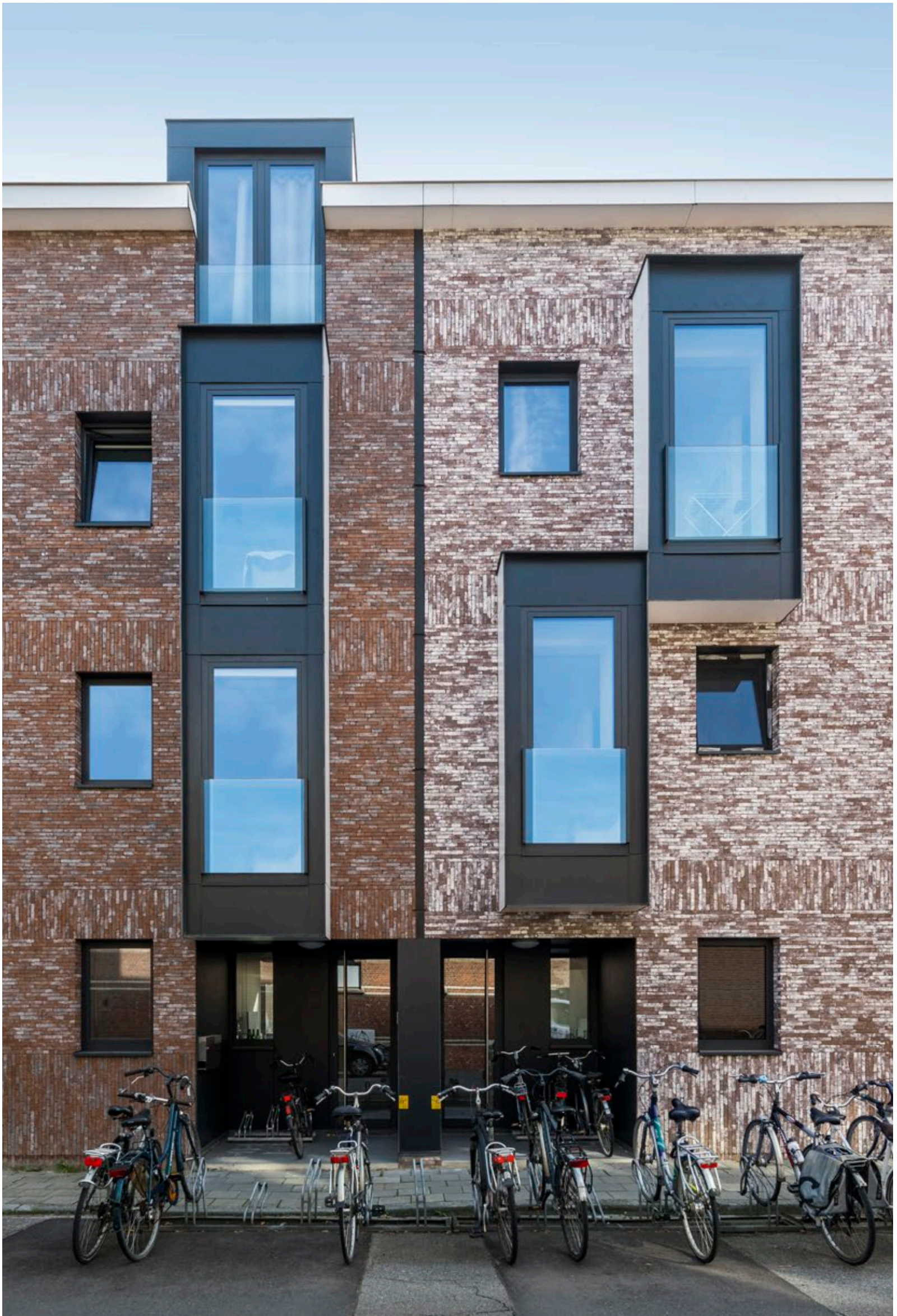
The design is located on an old, subdivided site of a network operator in Gistel. At the front, the plot was designated as a residential area for multi-family dwellings. A total of 25 flats were built, together with a shop and 38 underground garages.

The shape of the plot and the urban development regulations led to a contemporary design. A monolithic volume composed of one polygon that was repeated over and over again. The polygons were interlaced to create a striking shape with beautiful spaces in the roof volumes.

Uniform colour finishing

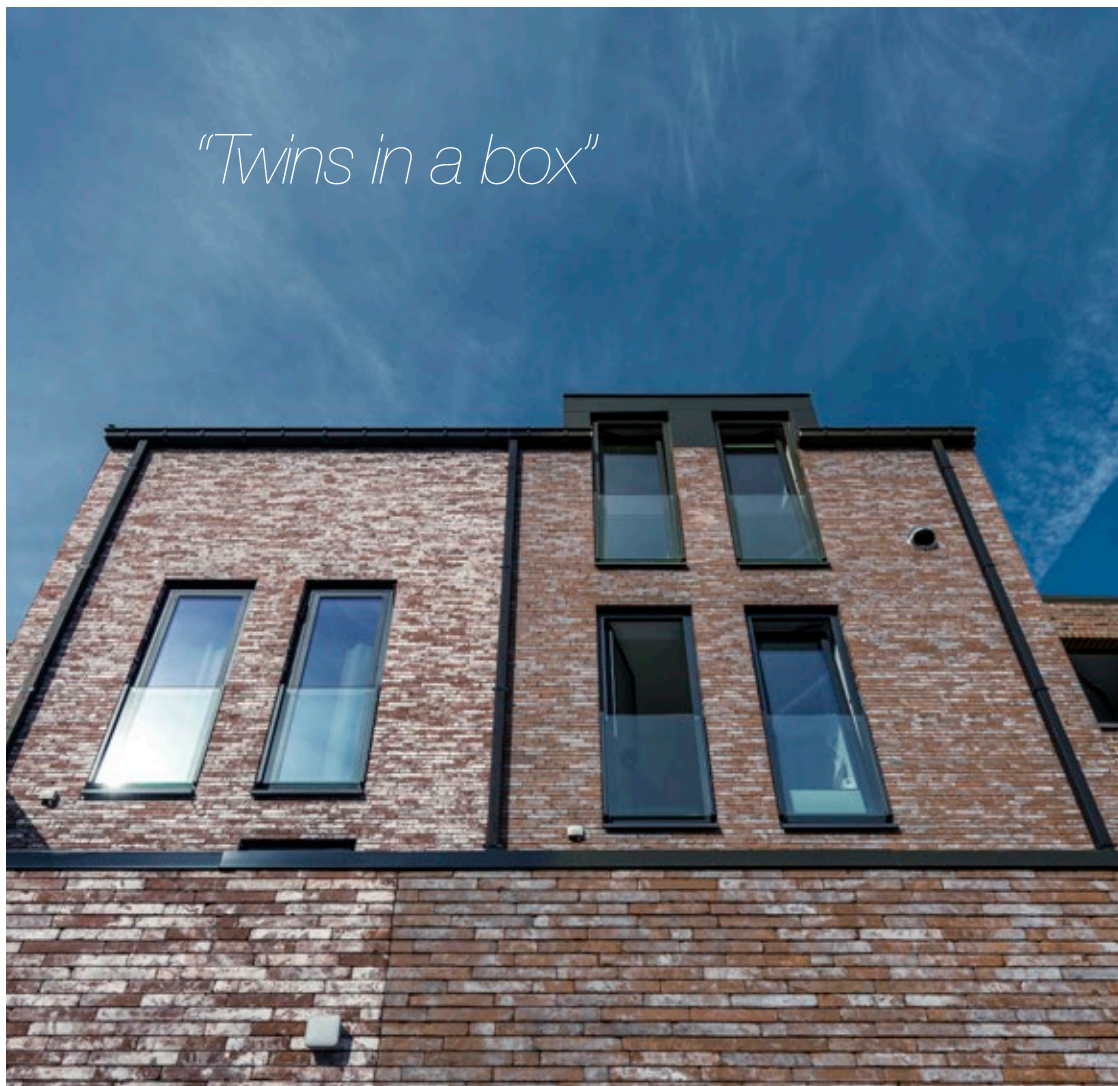
Both the roof and the façades were finished in the same colour, with the Elignia facing brick and the Plain tile 301 Smooth Amaranth. Thanks to their identical colour finishing, the intended result could be achieved.





Metropolis Civitas Brown Eco-brick and Metropolis Urbis Brown Eco-brick

"Twins in a box"



From four to three storeys

This high-quality student accommodation houses a combination of two residential entities, each with its own vertical circulation. The left-hand section consists of a triplex family home and three student rooms, all accessible from a communal stairwell. The four storeys match the neighbour to the left in terms of height.

The right wing has three storeys at the front, thus providing a subtle and gradual transition between the four and three storeys on the street. The right-hand section contains a single-family home and a studio. Several 50-cm-deep extensions were created in the façade. The two façades manifest themselves as fraternal twins, with many similarities but also their own specific characteristics.

New façades with aged look

In harmony with the neighbouring buildings, a brown-toned brick was chosen in different colour shades: the Metropolis Civitas Brown and Metropolis Urbis Brown, both Eco-brick. This gives each building its own character within a similar architecture. The Metropolis bricks unite both a contemporary and a retro look in a unique and innovative way. Their rounded corners and white-grey shades create new 'lived-in' façades, which fit in perfectly with the historic city centre.



BOND.architectuur,
Herk-de-Stad
© Photography: STERCK



Façade and roof: Plain tile Aspia Grey-Black Nuanced



Adins-Van Looveren
architecten, Tom Adins
and Jorne De Maré, Gent

One massive volume

This residence is the result of an intensive collaboration between various construction partners and an existing residential care centre. Twenty-four assisted living units were built with a high level of finishing. The whole fits into the imposed standard of two storeys and a roof volume, but still looks very innovative.

Only two basic materials were used: plain tiles and aluminium. Façades and roofs thus form a single massive volume, provided with accentuating openings. The main block dominates on the street side, but two horizontal ground-floor extensions were added at the back, where there are additional units. They are arranged in such a way that they naturally create a communal inner garden with an adjoining terrace, as well as private garden areas for the residents.

Daring choice

The choice of the Plain tile Aspia Grey-Black Nuanced was certainly a risky one. But it is precisely this neutral and at the same time nuanced appearance of grey tones in combination with bronze-coloured aluminium elements that gives the building its own identity. On the one hand, the material palette feels very earthy and familiar, and on the other hand, it draws attention to itself in various places through the interplay of volumes and the bronze accents.

“Creative interpretation of building regulations”

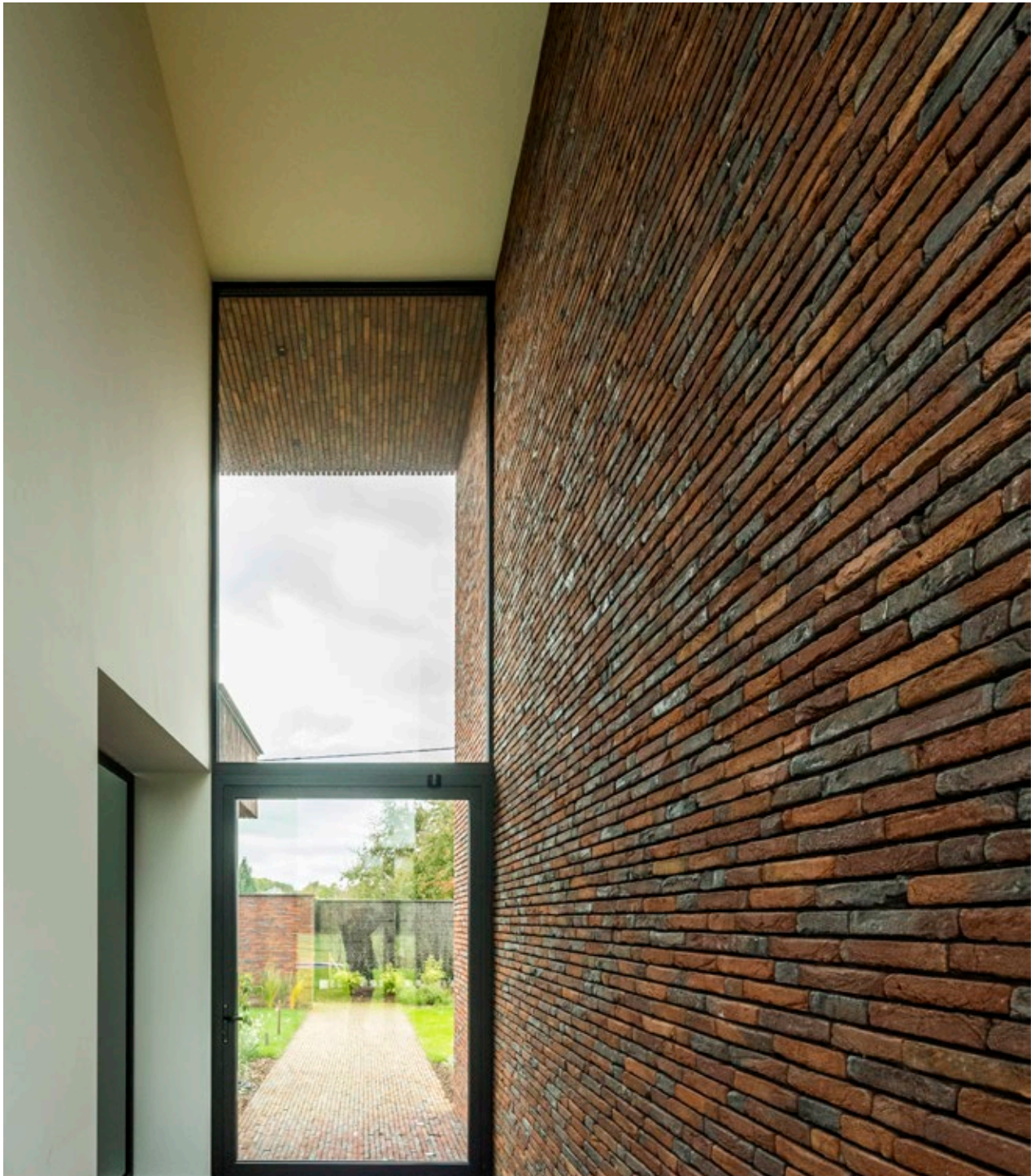




VP Architecten,
Pieter Verjans, Hoeselt



Brick-mix of Linaqua Vino and Viola Linaqua



Volumetrics of a farm building

This architect's house is located in a rural residential area, embedded between expansive fields and farms. The somewhat closed character of the front and the entrance through a gate at the courtyard/patio are features that refer to the volumetry of a farm building.

The elongated beam-shaped volume at the back interacts with the surroundings. In this way, the interior and exterior spaces are interwoven. The path to the house visually continues through the entrance hall and on to the garden.

The living area is oriented towards the patio and at the back towards the open fields. The incisions in this beam-shaped volume create different atmospheres, specific to the underlying functions.

Contemporary interpretation with brick

The facing brick used is a brick-mix of Linaqua Vino and Linaqua Viola. Their format and processing is a contemporary interpretation of the field bricks that characterise the environment. Their rugged texture and nuanced colour palette lend character to the closed surfaces and enhances the play between openness and discretion. Two vertical bands of brickwork reinforce the elongated volume and allow façades and canopies to flow into one another.

*“Fully integrated into
the environment”*







A sleek but airy whole

The new care campus Kouterman in Alken includes a residential care centre with 87 rooms and 33 service flats, a day-care centre and a service centre for the OCMW. On the ground level, the buildings form an F-shape, which somewhat disguises the large scale of the project and visually mitigates it. Mostly light materials were used.

Light, views and greenery played a decisive role in the project. For example, the residents have a communal garden at their disposal. For obvious and practical reasons, the day centre and the service centre are located on the ground floor. The residents' rooms, divided into smaller communities, are located on the first floor.



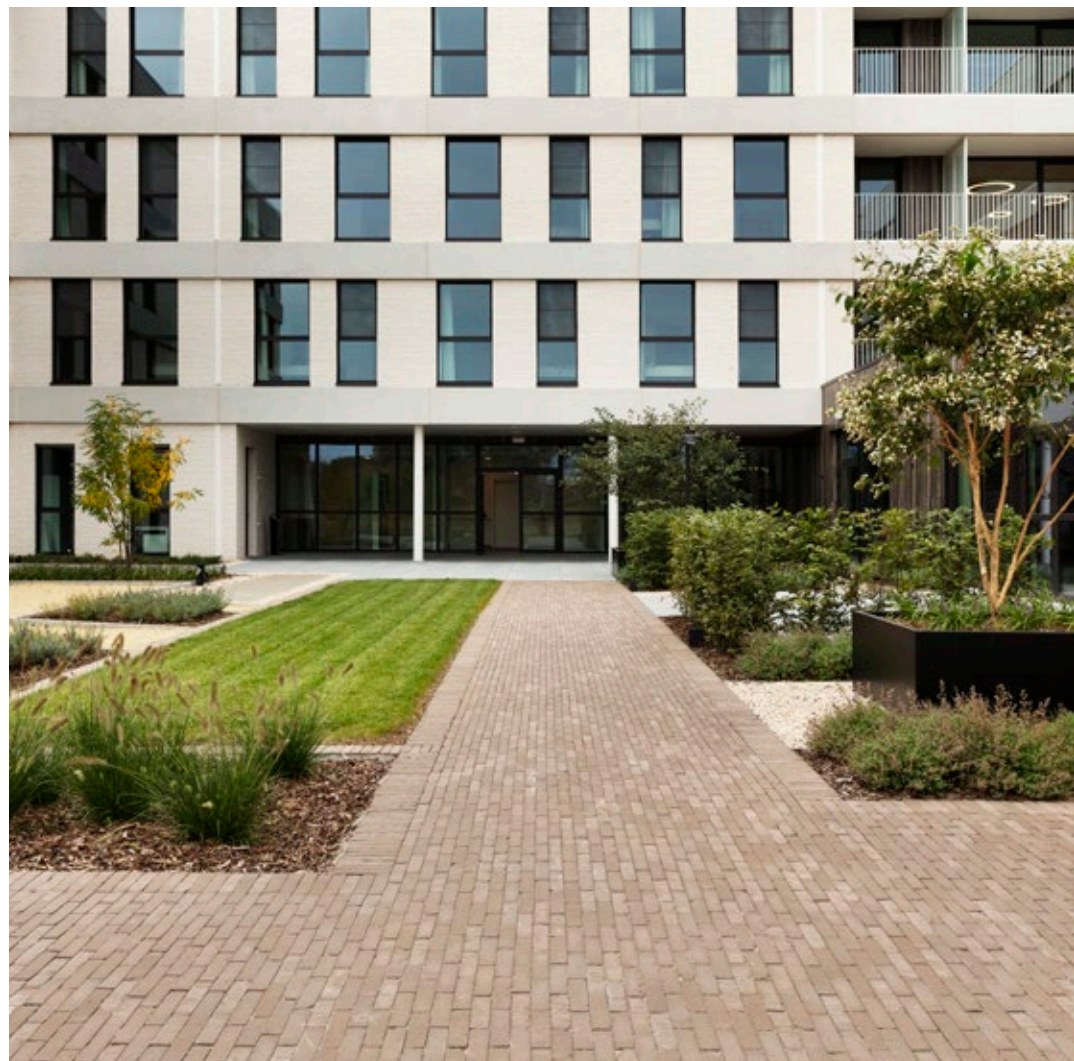
dbv architecten,
Denis Delhaise, Hasselt

White for a homey character

The Eignia Arctica White facing bricks were combined with horizontal strips in architectural concrete and accents in dark brown synthetic resin cladding. Together with the rhythm of the vertical windows, this creates a sleek yet airy whole. The terraces and paths were constructed using a Triton Tumbled clay paver. The authentic brick with its natural look and convenient size was the decisive factor in the choice.



All Garden Service,
Kris Blokken, Stevoort



Façade: Elignia Arctica White. Paving: Triton Tumbled

"Large-scale, people-sized"



Architect Edel Gallein,
Oostkamp

Update to present-day living comfort

The original farmhouse was in need of an integral update for present-day living comfort. The somewhat austere geometric building volume of the classic house with a saddleback roof was retained, albeit with a sleeker style. After dismantling the outer shell and installing post-insulation, the house was given a new uniform appearance. The same finishing material for the façades and roof surfaces creates a monolithic appearance and contributes to the serenity of the design and the material palette.

An extension at the front is the only break in the streamlined residential volume and accentuates the entrance area. The wedge-shaped front frame lends this striking element the necessary architectural airiness.

Timeless and distinctive look

The gently undulating Tempest Tile 44 Old Latem Red with its stylish weathered appearance gives the house a warm, natural look. At the same time, the subtle colour shades create a nuanced, timeless and distinctive look. The playful relief of the tiles contrasts beautifully with the clean lines of the building form and the aluminium exterior joinery.



Façade and roof: Tempest Tile 44 Old Latem Red



"Sleek building structure with weathered, natural appearance"

"Meeting a twofold challenge"



A penchant for the contemporary

This single-family dwelling was designed and built for a young couple open to sleek, contemporary architecture. For this project, two different major challenges had to be met: a building plot that was practically inaccessible from the road, and the creation of an unobstructed view of the valley at the back.

The plot is located in a residential area without any specific building regulations. However, the city expressed a particular desire for a revival of contemporary architecture.

Austere choice of materials

The Marono Braised Extra was used as the brick, referring to the slate soil. To preserve the austerity of the material, large black aluminium window frames were incorporated.

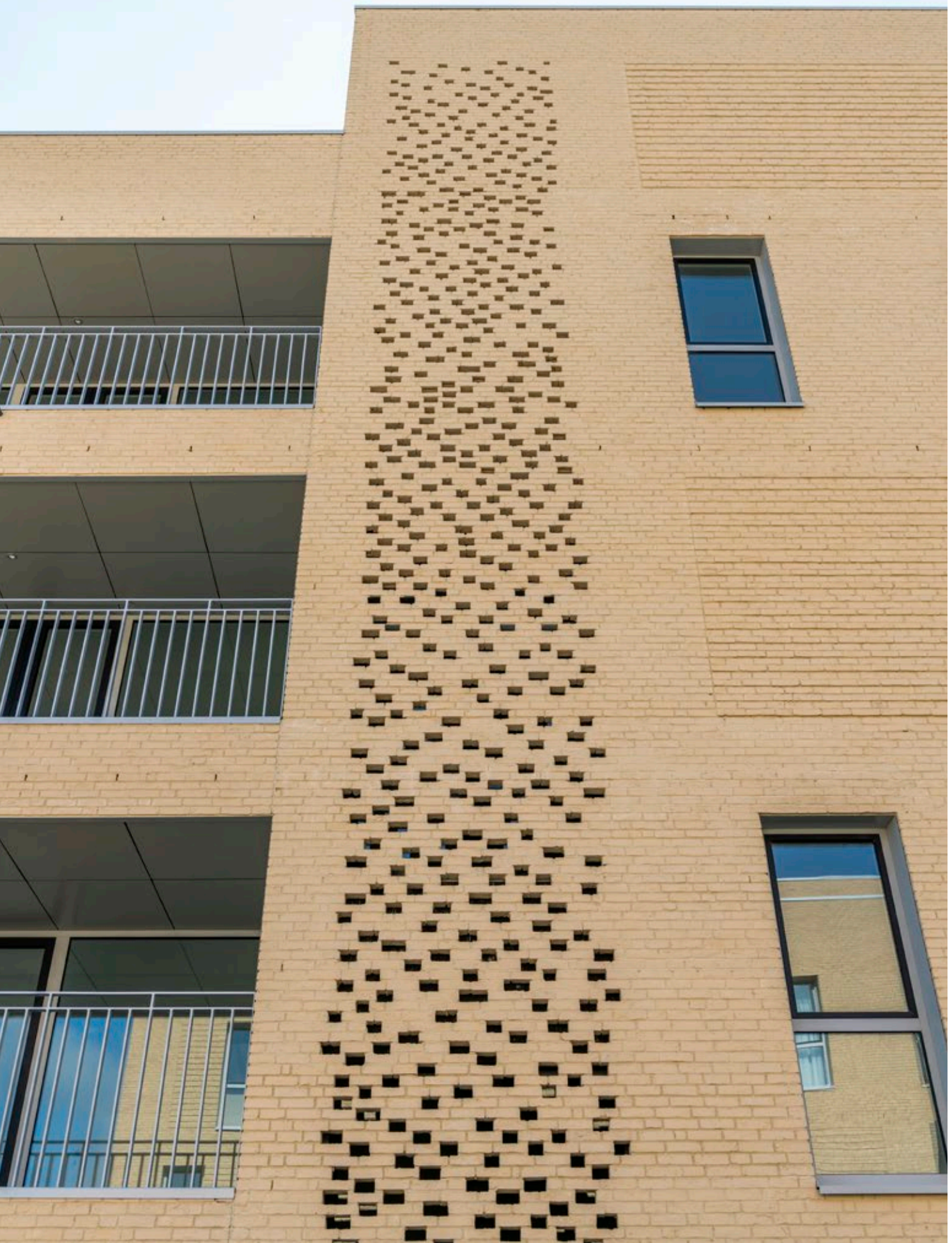


Architect Frédéric Fromentin,
Anderlues



Marono Braised Extra

"The gateway to a sustainable future"





Agora Ivory White

Sustainable living in a residential development

This new development in the Ypres housing development, De Vloei, is consciously focused on sustainability. NZE-houses were linked to a BEO-field for central heating and the project also underwent a broad sustainability test by the city of Ypres. These 2 urban villas with various housing types consist of 10 owner-occupied flats and 12 rental flats on either side of the street.

There is a spacious bicycle shed and an underground car park. Due to its location, this double project forms a gateway from the Hoveland neighbourhood to the new eco-neighbourhood. Here, the sensitive expression of brick plays a connecting role between the past and the future. During the creation of 'de Vloei', the architectural firm quickly came up with the idea of starting from an appreciation of the characteristic brick architecture of the region.

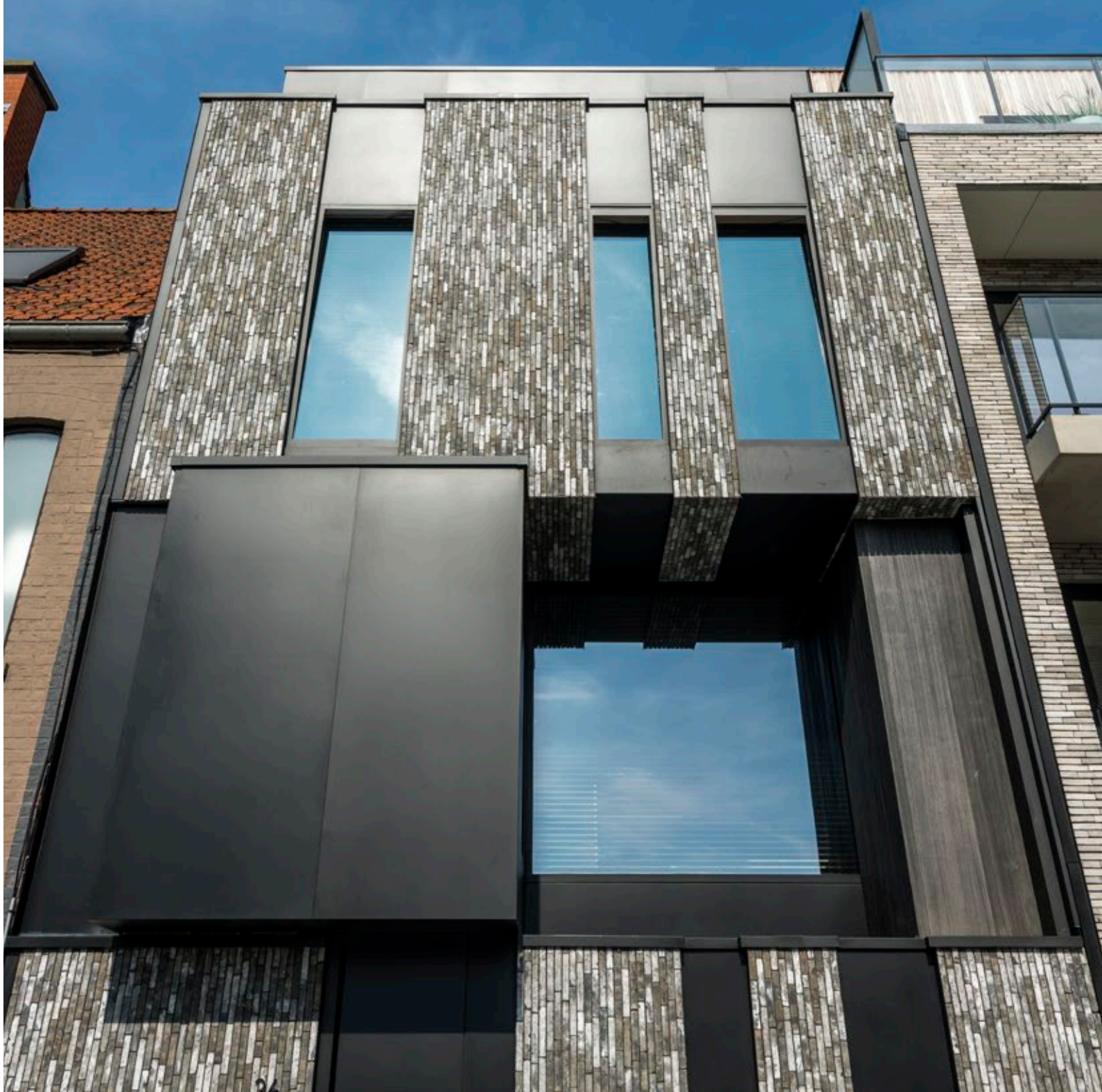


Atelier M Architects+Planners,
Brussels

Brick, an obvious choice

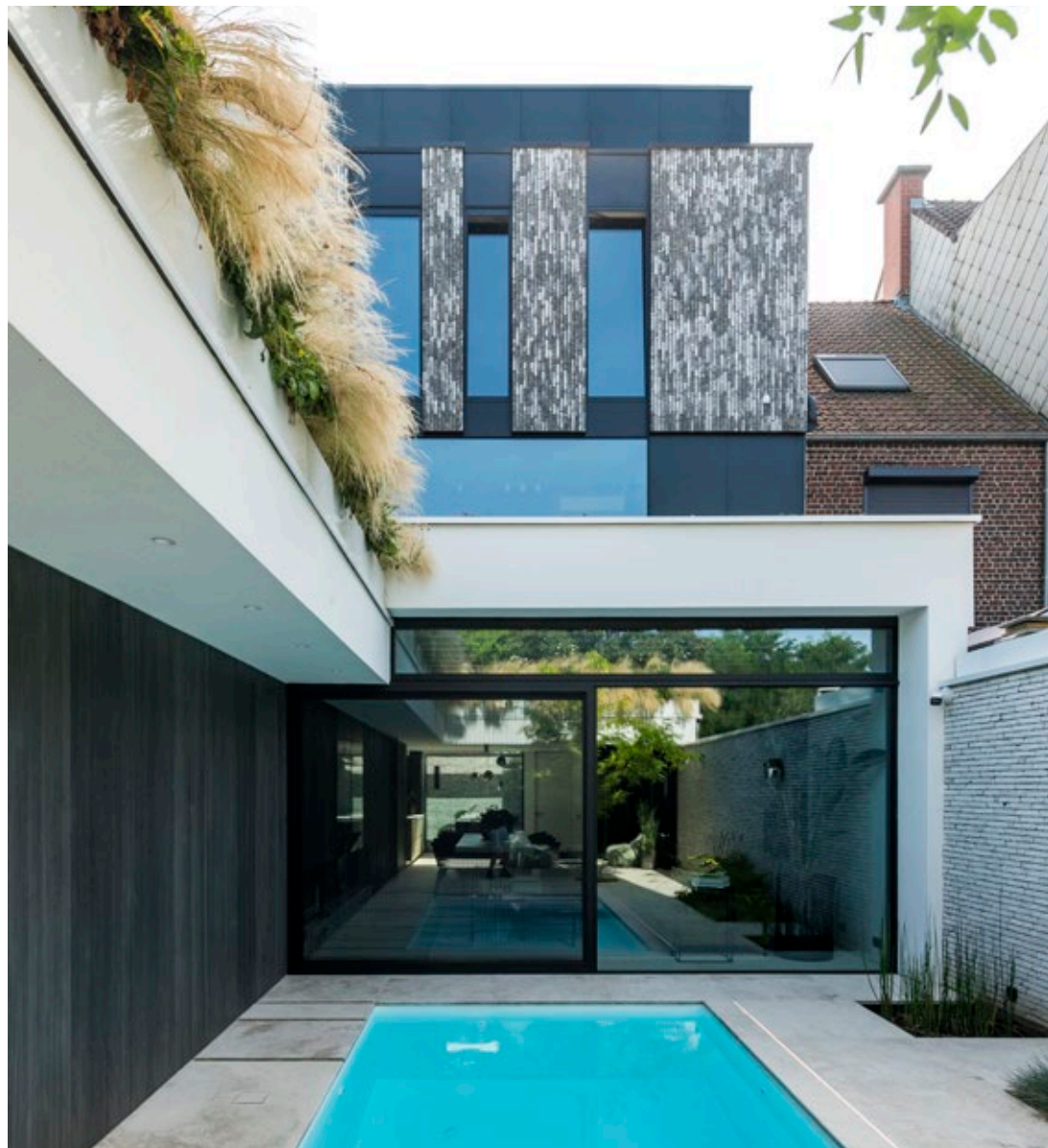
Within the sustainable neighbourhood concept, the choice for brick was obvious. Agora Ivory White was chosen; a bright brick in an irregular pattern and jointing mortar tone on tone in order to maximise the colour effect within the image quality plan. To give the volume extra expression, a claustra bond was used at the height of the stairwell. Playful relief strips were incorporated into the larger surfaces.

“Maximum openness between two closed walls”





Ruimtemannen,
atelier voor architectuur,
Nicolas Vandoorne and
Wouter Cannie, Kortrijk



Between two patios

This terraced house in the heart of Waregem was conceived as a spacious patio house. Between the two closed shared walls, abundant light is still drawn into the living space, located between two patios, namely a vertical patio on the street side and a patio as an urban garden with swimming pool.

Large windows, barrier-free transitions and materials allow indoor and outdoor spaces to flow seamlessly into one another. The staircase moves around the vertical cabinet wall, along the generous open space above the dining area and between the different split levels with office space, sleeping areas and bathrooms. In addition to a great sense of space and maximum incidence of light, the open space creates interesting contacts between the living areas and the office and bedroom areas above.

Monolithic effect

For the façade finish, a facing brick with its own character was sought: the Metropolis Vesta Black, a rugged facing brick with nuances ranging from dark grey to white. The thin joint and the random bond give the façade surfaces a monolithic appearance. The vertical arrangement of the facing brick responds perfectly to the intended verticality of the 'barcode' architecture.

The facing brick harmonises beautifully with the black aluminium joinery. This Eco-brick is thinner than a classic facing brick and leaves more space for cavity insulation. For the city garden patio, the limestone Imperium Albius was used. The facing brick also continues as a wall finish in the car shed/man cave.





Imperium Albus

*“Great added value
for the neighbourhood”*

Contemporary landscaping

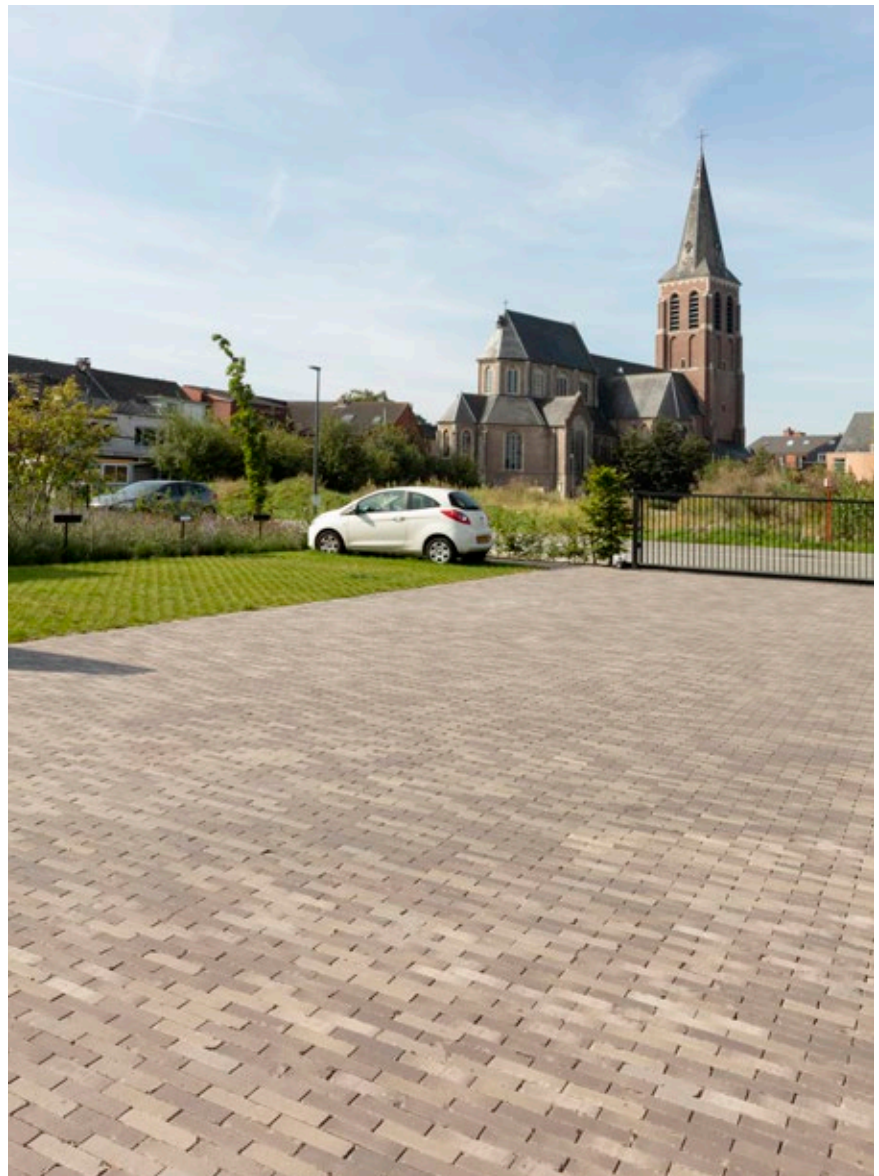
With its voluminous, modern architecture and stylish surroundings, the Viridi residence is a real eye-catcher in the centre of Brecht. Until recently, this site was occupied by a vicarage. As the name Viridi suggests, this project was carried out in an entirely green setting. The natural look of the plants and the clay pavers ensure that this project is shown off to its full advantage. It is a pleasant place to be for the residents and the site also contributes a great deal of added value to the neighbourhood and the streets.

Sleek yet natural

For both the driveway and the garden path, the choice fell on the Lotis. The minimal joints between the clay pavers provide a contemporary, sleek appearance. The tumbled finish gives a natural look that can also be found in the plants. The grey-beige colour provides a nice contrast with the green plants that accompany the path.



Garden and Landscape Architecture,
Leonie Aertsen, Wuustwezel



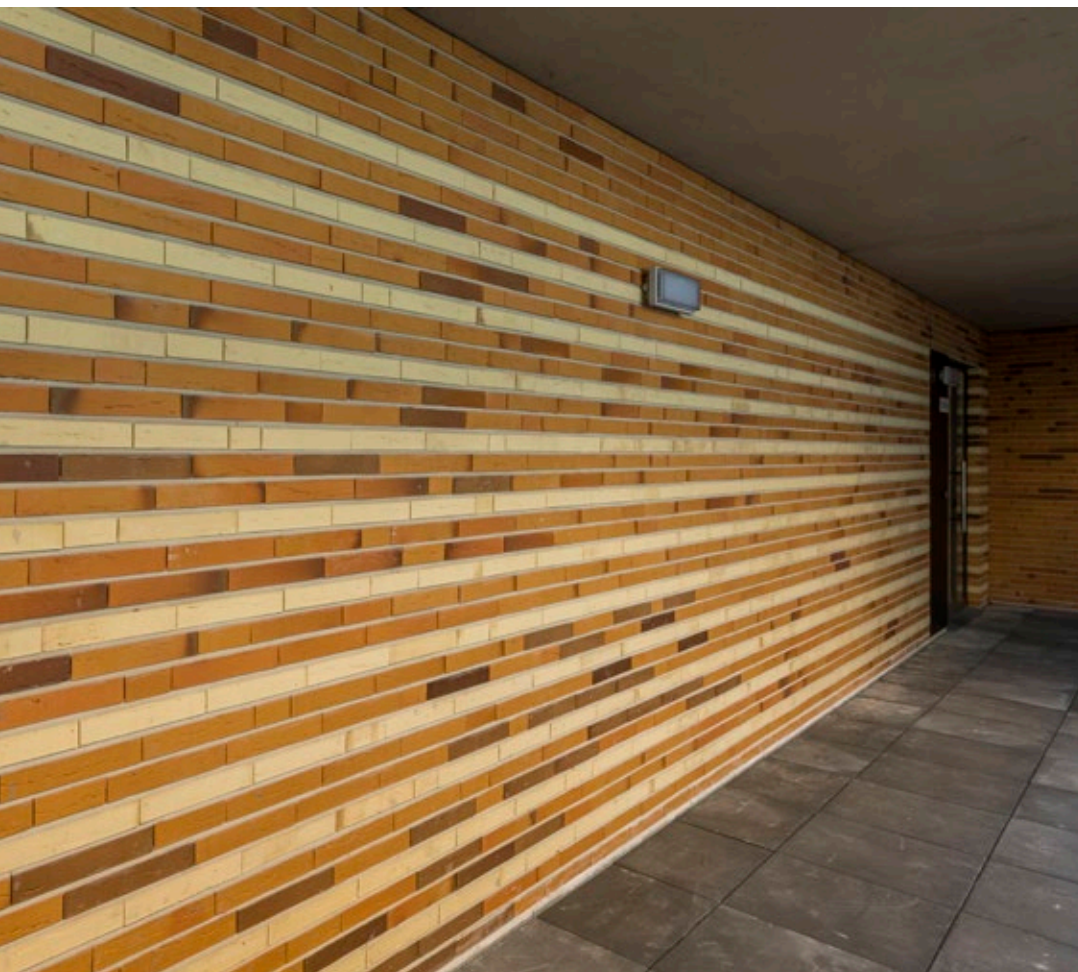
Lotis





Façade: Elignia facing bricks. Roof: Actua Slate Engobe

“Window to the landscape”





Exciting mix of social housing

The building programme of these 80 social housing units in Koolkerke is perceived as a mix of social housing. All building volumes run in 8 rows almost parallel to the main road, but are slightly rotated with respect to each other so that traffic-free residential streets are created in between.

The courtyards and the residential blocks look out onto the polder landscape behind them and enjoy a favourable east-west orientation. The multi-family dwellings are clustered around a central circulation space. The abandonment of the classical, conventional 'battery' of flats creates façades of equal value. The two volumes of stacked housing around the courtyard provide a strong sense of unity. The diversity of the intended residents is expressed in the design of the dwellings.



Architecten Groep III,
Dimitri Duysburgh, Brugge
in collaboration with
evr-architecten, Gent

Contrasts and accents

For each residential street and per multi-family house, alternating Eignia bricks were selected, which provides a nice variation. The complementary and soft tones ensure integration into the polder landscape. Certain façades were provided with protruding facing bricks. The roofs are finished with the sleek Actua Slate Engobe tile. The anthracite colour provides a nice contrast with the bricks.





Conix RDBM Architects,
Stephane Schats, Antwerpen

Organized around a common inner courtyard

This project in Leuven comprises 18 flats plus an office and a commercial space. The project involved the revitalisation of a former hospital site and the renovation of an existing building that was formerly part of a brewery complex. The new site respects and repurposes the valuable buildings and weaves them seamlessly into a new inner-city design, organised around a common courtyard.

The existing buildings and their template were an established reality. The new building, on the other hand, was placed at right angles to the length of the Dijle, creating a new inner courtyard on the one hand, and connecting it to the existing buildings on the other. In this way, the cohesion of the block was restored.

*“Brickwork site
gets a new
and versatile
interpretation.”*





Façade and roof: Plain Tile Plato Warm Rusty Brown (custom product)

Cohesion between old and new

In terms of architecture, a strong distinction was made between the existing buildings and the newly added parts. For the new buildings, the façade and roof were finished with accessories made from tile Plato and tile 301 Warm Rusty Brown products. The roof of the existing buildings was covered with one and a half tiles 301 in the colour Warm Rusty Brown. By using mainly this one material, the cohesion between old and new was reinforced.









Cowork Architecten, Cosimo Menga and Wouter Philippe, Gent

Discrete yet striking

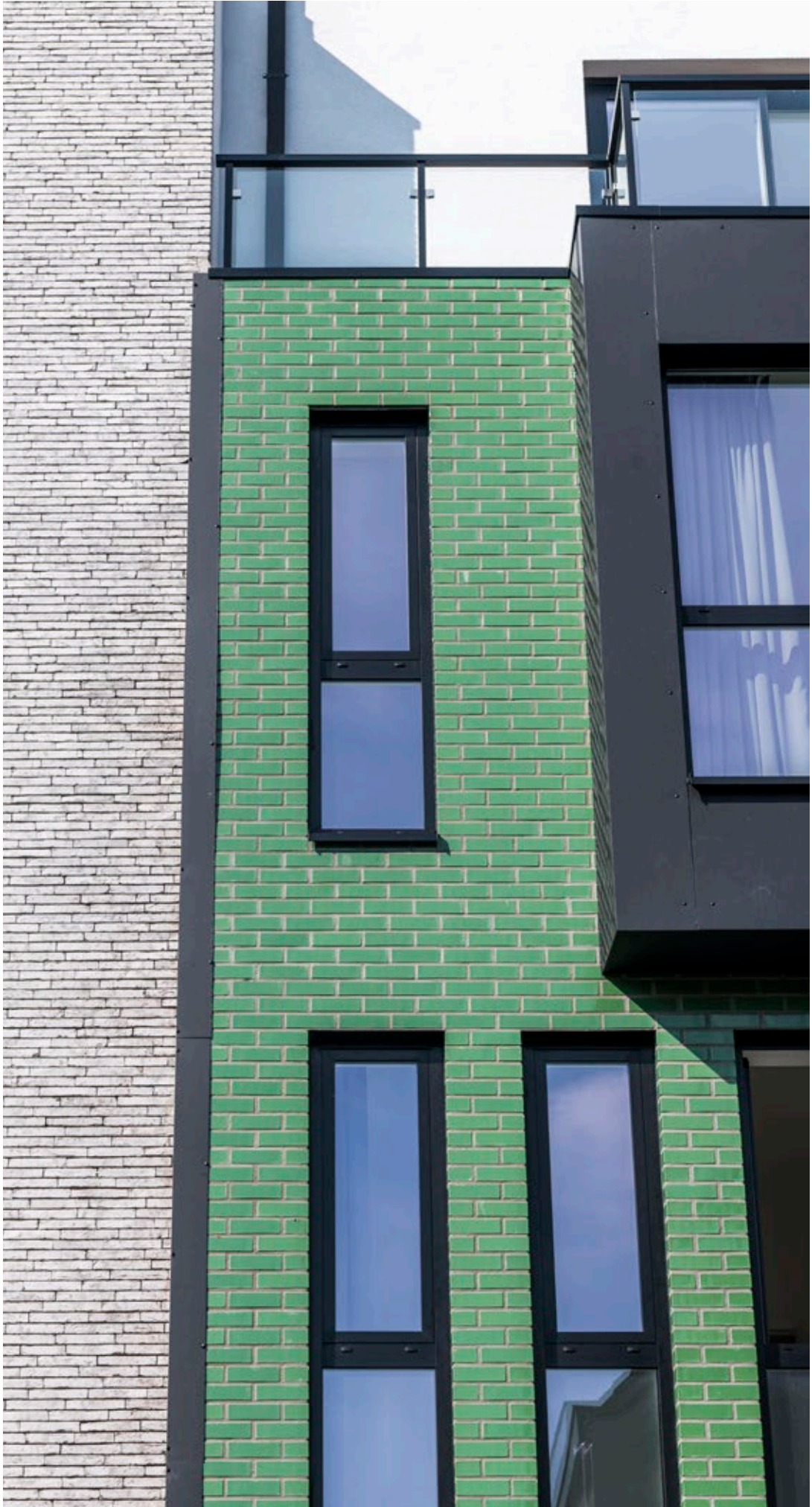
A former bakery was demolished and replaced by a new building with a ground-floor office and 3 flats in the centre of Ghent. The client's request was to develop a project that would both stand out and blend in with the profile of the street. In terms of volume, the new building fits in perfectly with the streetscape, but the materialisation and composition of the building make it unusual.

The office on the ground floor is largely glazed to make contact with the street. The flat on the first floor has rather austere window sections to create privacy. The unit on the second floor was given a façade extension that acts as a canvas to the street. The top floor is pulled back to create an outdoor space that serves as a sunny spot above the busier city life.

Clever colour combination

In terms of materialisation, the façade is mainly constructed with Glazed Crystal Green and with black external joinery in order to form one whole. During the design process, the right combination of colours was searched for in order to do full justice to the design.

"A quiet place in the midst of busy city life"



Glazed Crystal Green



Waterstruck Special Grey

Protective shell on the street side

The aim of this project was to create a single-family dwelling that would make maximum use of the corner plot. It was only natural to take maximum advantage of the orientation of the plot and to create privacy in relation to the public areas of the streets.

The masonry façades create a protective shell on the street side.

The openings on this side have therefore been kept to a minimum. Original claustra frames for certain windows increase the sense of intimacy. The living rooms are on the ground floor and overlook the garden and the swimming pool. The bedrooms are on the first floor. In this way, the house was optimally oriented towards and opened up to the garden.

*“Discretion
is the key
to intimacy.”*

Enhanced sense of presence

The horizontality, the rugged character and the grey tones of the Waterstruck Special Grey brick were decisive in the choice of material. The length of the bricks also accentuates the sense of presence of the house in the streetscape.



Buro 5, Julie Valette,
Naninne



"A sleek, sustainable and contemporary framework for inspired working"



Façade and roof: tile-mix of Plain Tile 301 Smooth Brown Glazed, Black Glazed and Anthracite



UP Architecture, Rhisnes



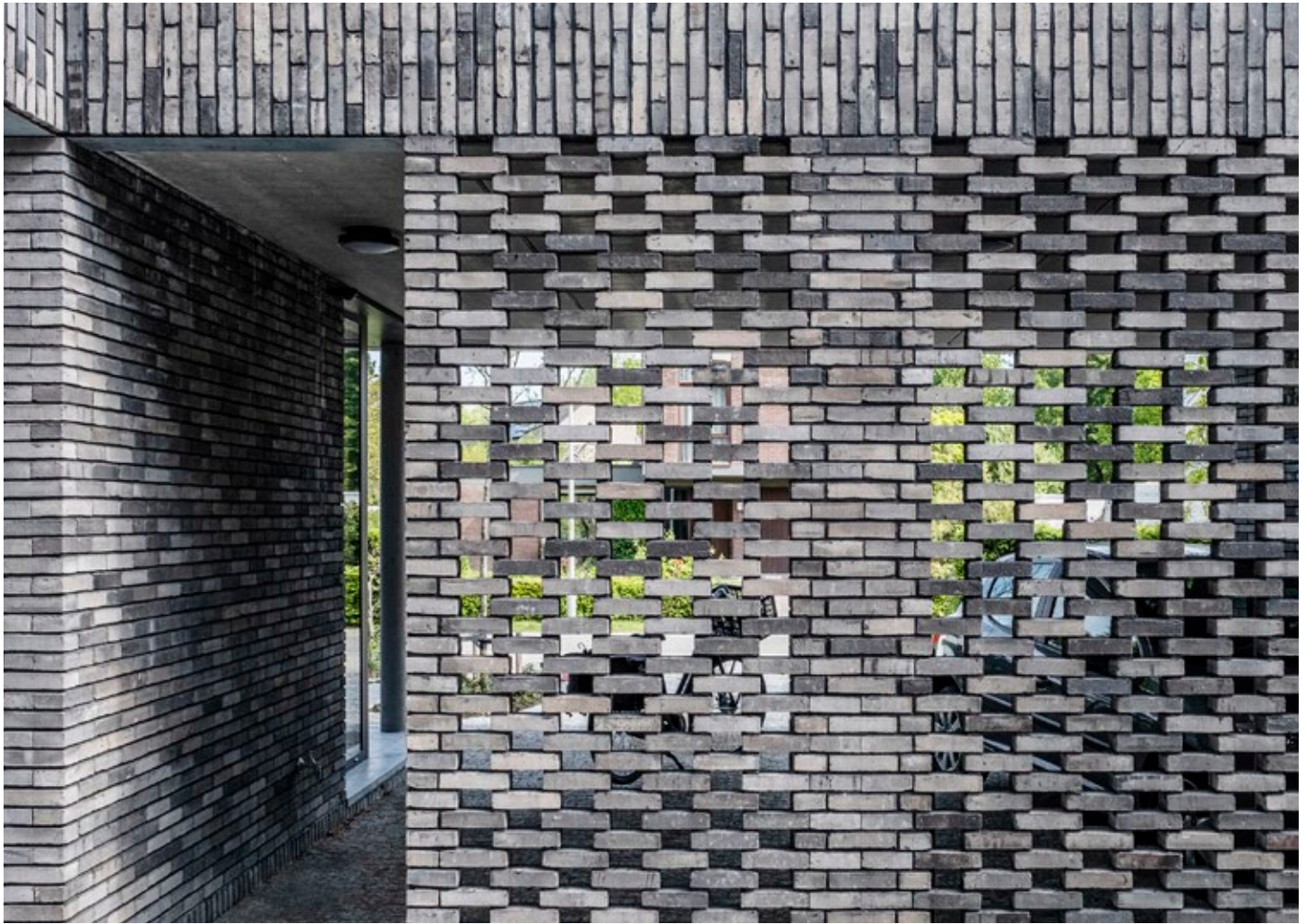
Twenty architects under one roof

The construction of this Business Centre for Architects was aimed at sharing offices and resources and at symbiotic collaboration between architects. The building fits into the urban context thanks to its architectural language of form, its sloping roof and its refined volumetry.

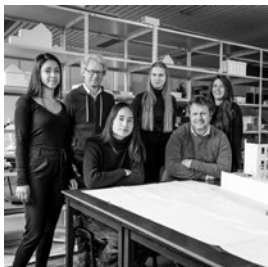
The offices are located on half-levels. Thanks to their light and openness, the different spaces promote mutual communication between the companies/offices.

Symbol for architectural boldness

Only one single material was used for the building's façades and roof. This material had to be contemporary and sustainable, and emphasise the building in the street scene. After all, the original intention was to distinguish the building from the masses and to symbolise architectural boldness. The tile mix of Plain Tiles 301 Brown Glazed (20%), Black Glazed (40%) and Anthracite (40%) met all these objectives.



Magistrada Lumina



Staut Architecten, Boechout

Spaces separated yet connected

This house was designed for a newly formed family with four children. Because of the size of the house, a way was sought to draw air and light in. A central patio connects the outdoor environment with the living volume. This gives all the rooms in the house an abundance of light and greenery, blurring the boundary between indoors and outdoors.

A great deal of attention was paid to the refined detailing of the façade, including continuous claustra joints. An open carport at the front provides a view of the greenery on the patio. Bands of vertical brickwork were added to the horizontal rhythm.

The various ground floor spaces are divided but still connected, creating a homey as well as an open atmosphere. The partition walls between the bedrooms on the first floor have no load-bearing function, so that in the future the house can be flexibly transformed into a home with a studio.

Horizontality emphasised

The Magistrada Lumina alternates between black, beige and grey shades, creating a nuanced façade appearance. This gives the house an authentic patina which integrates into the natural environment. The brick is also ideally suited to the creation of claustra walls. The mortar between the bricks forms a dark-grey back joint that emphasises the horizontality of the façade.



© Photography: Nick Claeskens

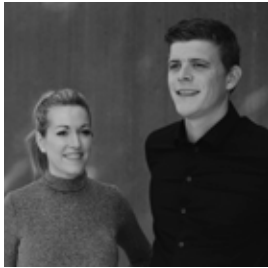
"A home geared to growth and evolution"



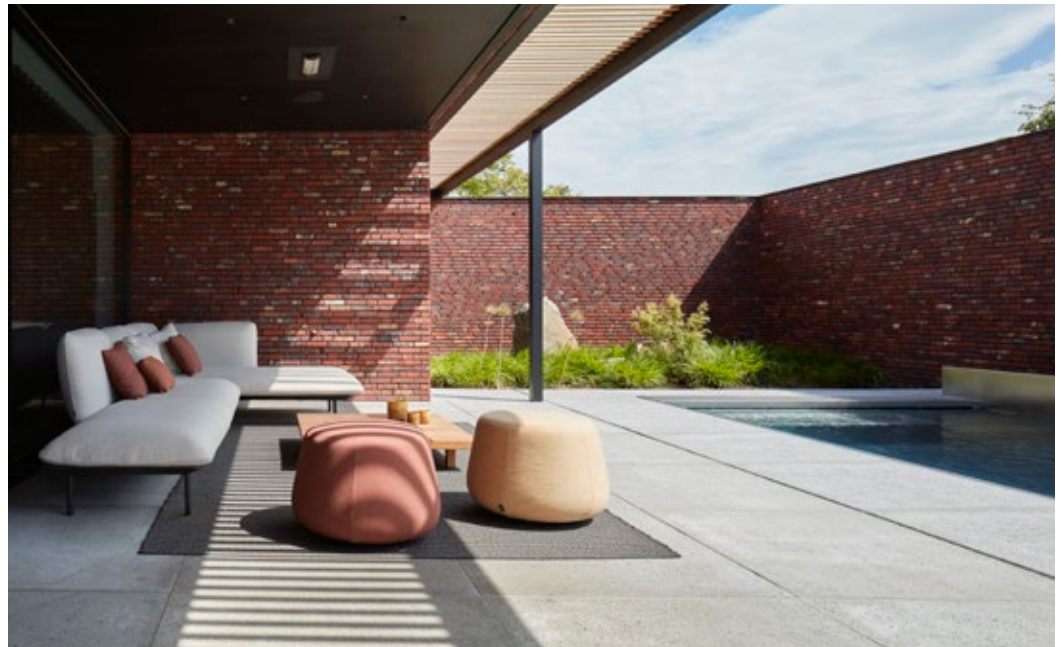




Hectic



studio segers architecten,
Danielle Joosten and
Raf Segers, Maaseik



© Photography: Steven Massart

An abundance of natural light

This architect's home is located on a corner plot in the green surroundings of the Meuse valley. The front and right-side walls were kept closed, with an eye to privacy. Part of the front wall also serves as a garden wall. This demarcates the corner plot, creating an interesting courtyard garden at the back, facing due south.

Inside, the house is flooded with natural light thanks to the large windows, the loft and the roof patio. In addition, the practical layout of the house ensures that no space is lost unnecessarily, which leads to optimal living comfort for the residents.

Local, with a story

A Hectic brick was used. This distinctive, nuanced red brick results in a beautiful contrast with the black aluminium cladding. The brick is fired in the ring kiln barely a kilometre from the house. The ecological card was clearly drawn here and the choice was made for a local product with a story.

*"Contemporary design
adorns the old Meuse."*





"In harmony with the surrounding dune landscape"



Lotis

New needs of residents met

In this renovation project, the plants in the external areas were respected, so that the garden enjoys a private character. The garden was fully adapted to the new needs of the residents. This includes an improved walking function around the home, larger terraces and a forecourt where cars can easily park and turn. The basic profile of the dunes was preserved as much as possible, which gives the garden a playful touch.



HWS Landscaping,
Piet Gysel, Antwerpen

A conscious choice

The Lotis was deliberately chosen. After all, it is a colour and size-fast clay paver with a soft, neutral tone that harmonises beautifully with the house. Because the clay pavers are so neutral, the plants also come into their own better. The Lotis clay pavers do not moss so that they always look beautiful and do not become slippery.







“New police station with a familiar and sensible appearance”



Luc Van Campen Architectuur,
Boechout



Elignia Robinia

Resting on a base

The new police station in Mortsel is largely surrounded by public space. For more discretion and security, the building is placed on a base with a raised ground floor. On the street side, this base forms a public square that, together with the ground floor, rises above the surroundings and reinforces the connection between the public part and the internal services.

The walls of the reception area, designed as exterior walls, contribute to the public character. The south and west façades were doubled, which, despite the large windows, creates natural sun protection and more discretion for police work.

Inside, the open structure provides maximum contact between the different services, both horizontally and vertically.

Unpretentious character

Elignia Robinia was used for the façades and Tempest Tile 44 Slate Matt Glazed for the roof. The façades of the building are inspired by the structure and the use of materials of the façades of the Mortsel's monument "Fort 4". The materials that were used have an unpretentious, quiet and recognisable character. This gives the police building, together with its classical façade construction, a familiar and logical appearance.





Imperium Flavius

Playful volumes

The design of this house was mainly determined by the shape of the plot and its orientation. This is an atypical plot where the south-facing garden is located entirely to the right of the house.

In terms of volume, the house was opened up on the right-hand side wall towards the garden. An awning provides the necessary sun protection during the hottest days of the year. The contrast between the closed parts with facing brick and the large windows in the front wall, together with the staggered volumes, create an airy, playful character.



VAMarchitecten,
Wim Vanacker, Moorslede

Bonded in a staggered pattern

The Imperium Flavius was chosen in staggered pattern. This facing brick was considered in the first place because of its nuanced colour and narrow, elongated shape. Its format, combined with its bonded application, nicely reinforces the horizontality and emphasises the volume effect of the design.







"Dictated by the shape of the plot"



All about the slope

The project is situated on a gentle slope of the Koppenberg and enjoys beautiful views of the landscape. The house consists of 2 parts: one living volume that is grafted onto the sloping terrain and one bedroom volume that is built into the slope of the terrain.

The new volume was placed parallel to the slope and visually lifted slightly, giving the impression that it is floating. It was given a rural archetypal saddleback roof. The ridge was pulled slightly out of the axis, away from the flank.

The sleeping quarters were built into the slope half a level lower. The sloping landscape merges smoothly into the green roof on the bedroom volume, which is almost completely hidden from view. A third freestanding volume with the same silhouette as the main volume serves as a multifunctional space.



AR-tuur Architectenbureau
Annelies Vancraeyveldt and
Lorenzo Kemel, Waregem

Warm-coloured shell

The façade materials that were chosen are based on tradition. The red nuanced fired clay of the Gravita (no longer produced) facing bricks and the Aléonard Esprit Patrimoine Kent Red roof tiles give the house a uniformity and bring the contemporary appearance to a perceptible level. The warm colours communicate perfectly with the colours of the changing seasons.

For the paving to the garage, red-brown Castello clay pavers were chosen, matching the shell tones of the house. They guarantee a solid surface for driving up and manoeuvring.



*"Humbly embedded
in the landscape"*



Façade: Gravita (from range)
Roof: Aleonard Esprit Patrimoine Kent Red



Tile-mix of Plain Tile 301 Smooth Rustic, Amarant, Braised Blue and Natural Red



Architect Olivier Desmet,
Bois-de-Villers

A contemporary and exceptional volumetric system

This project is located in an area with a fairly mixed typology. Classic detached villas, elongated farm buildings, turnkey houses and contemporary constructions alternate. With this realisation, the aim was to achieve a contemporary and unusual volumetry, fitting within the proportions of the original building. The colour palette used was inspired by the hues of the neighbouring buildings in red sandstone and brick.

Environment-inspired choice

A tile mix of Plain Tile 301 Smooth Rustic (50%), Amarant (30%), Braised Blue (10%) and Natural Red (10%) was chosen. A choice that was prompted in part by environmental concerns.



*"A contemporary reinterpretation
of traditional brick masonry"*



Façade: Metropolis Aula Red Eco-brick. Roof: Datura Slate Engobe
Paving: Authentica Red

Compact living around communal green spaces

‘Project Ruytershoeve’ is an integration project located in a densely populated village centre. An existing, restored house and gatehouse were extended on the street side with a new construction volume of 2 flats and behind with 18 new homes around a central green park garden.

The existing house and gatehouse had to be preserved because of their heritage value. Initially, this was a typical Haspengouw square farmstead. By separating the original volumes of barns and stables, passages and footpaths were created with fascinating visual axes.

The homes behind are situated at a slightly higher level due to the slope of the terrain and have a private garden with a terrace, garden shed and connection to the surrounding footpaths.



Hela! Architecten,
Sophie Helaers, Zoutleeuw

Sleek and austere use of materials

For the façades, the Metropolis Aula Red Eco-brick was used. The roofs were covered with Datura Slate Engobe roof tiles. This has resulted in a sleek and sober appearance, that also refers to the typology of the surrounding farms. In the park garden, a winding path was laid with Authentica Red clay pavers.



"A new take on the classic square farmstead"





“Different saddle roofs for a special dynamic”



Façade: Hectic. Roof: tile-mix of Aléonard Esprit Patrimoine, Lichen Green, Kent Red and Vineyard Black

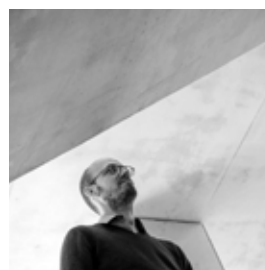
Archetypal farmhouse shape

This property fits perfectly into the rural context of the site. The building consists of a residential house and a rear garage with storage room and sauna. The different gabled roofs create a special dynamic. Two gabled roofs even merge into one another. The geometry of the gable roofs is accentuated by the virtually closed façade.

The archetypal farmhouse shape is emphasised in several ways. Both volumes are built of brick. The entire structure of the house is designed to maximise daylight and beautiful views. The architects did everything possible to direct the house towards the garden and the landscape. Different light enters the house at different times of the day, changing the experience each time.

Different directions and depths

The façades consist of a rugged red brick Hectic, processed on a mortar bed, which reinforces the rural and massive character of the house. In certain places, the brickwork has been applied in different directions and depths. The colour of the Aléonard Esprit Patrimoine roof tiles is matched to the colour of the facing bricks, so that the geometry of the gable roof is further emphasised.

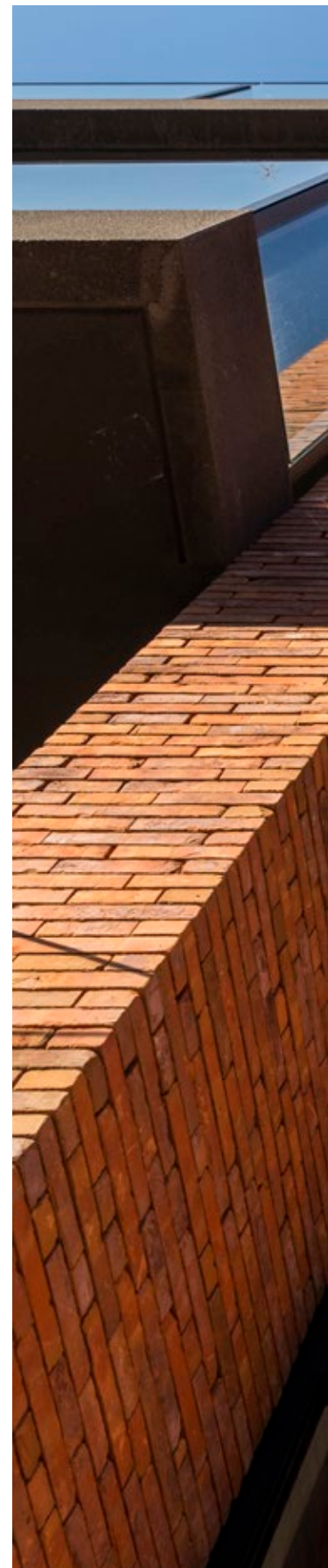


i/o architecten, Jao Smet, Sint-Niklaas





Façade: Metropolis Aula Red Eco-brick. Roof: Plain tile Aléonard Pontigny Mellow red

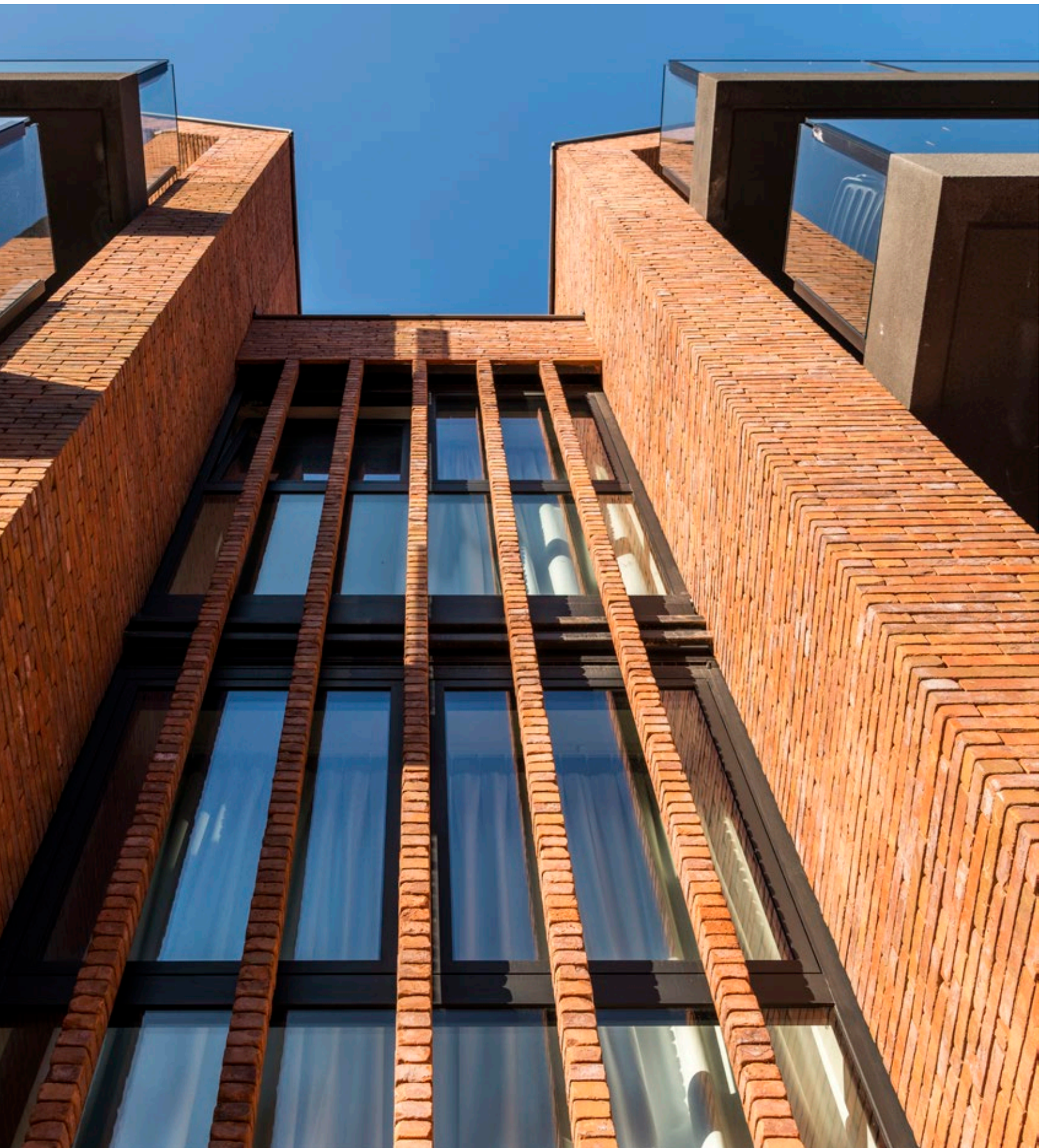


*“Contemporary interpretation
of a multitude of dormers”*

New building volume with respect for property heritage

This old family hotel ‘La Noble Rose’ stood abandoned, a listed building with no significant future. The structure of the building had deteriorated and its architectural charm had largely disappeared, making it impossible to preserve. It was therefore decided to translate the original play of volumes of façades, roofs and dormers into a contemporary form.

A new corner volume provided a perfect fit between both classic and modern architectural styles in the immediate surroundings. The gradual reversal of the façade also made the transition to the overhanging high-rise more accessible. In contrast to the horizontal, white coastal architecture, verticality was chosen here. The use of brick builds a bridge to the past, but still fully responds to an urge for innovation.



In line with the history and the village landscape

The façade was constructed in a Metropolis Aula Red Eco-brick and the roofs in a Aléonard Pontigny Mellow red tile. This choice of material and colour scheme was in line with the original materials and with the village landscape.

Different bricks from Wienerberger were submitted to the Monumentenzorg (National Trust) in order to match the earlier bricks as closely as possible. By using the same red tones for the tiles, a contemporary volume could be created.



iuum architects, Oostende

"Perfect anchoring in the surrounding context"





The language of dual form

This house was built on the edge of the plot to free up as much land as possible around the house. The project makes use of the options provided by the orientation and the surrounding context and employs a double language of form: a massive and monolithic front façade in stark contrast to the rear façade that opens wide to the neighbouring fields. The horizontality of the house makes it possible to anchor itself in the surrounding context, which is dominated by the meadows.

Harmony of grey and black

The design of the house required a materialisation that could respond to this dual language. The robust and elongated Waterstruck Special Sablé brick lends character to the large masonry surfaces and reinforces the horizontality of the whole, particularly thanks to the absence of joints. The thin jointless masonry allows the shape of the brick to stand out. The sand-grey tones blend in with the black aluminium joinery, which enhances the refined volumetric.



Architect Benoit Courcelles,
Moeskroen





The photos in this brochure are indicative and may deviate from the actual material. The information in this brochure cannot be considered binding and may be changed at any time by Wienerberger. 03/2022



Wienerberger
International Export Division
Kapel ter Bede 121, B-8500 Kortrijk
T +32 56 24 95 83
export.be@wienerberger.com,
www.wienerberger-world.com

