

# BRICK+CO.



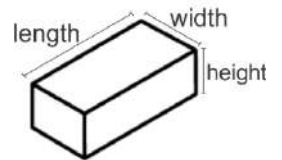
Full Brick Range | 2024 >

## Quality

All TERCA facing bricks comply with the European Quality Standard EN 771-1 and have full NZ Compliance. Wienerberger is the largest producer of clay bricks worldwide. Our bricks are produced in Europe using natural clay and some are still fired in 200-year-old kilns steeped in history. All Wienerberger bricks are manufactured with a Declaration of Performance to meet the highest world standards and are exported to over 30 countries.

## Sizes

Our bricks come in a multitude of sizes and formats. The most common dimension being **WFD65** 215(L) x 102(W) x 65(H)mm. There are many depths, widths or heights available. Most bricks are also available as brick slips with a minimum thickness of 22mm, however these can be customised to be thicker in size. All facing bricks are shown in mm (Length/ Width/ Height). Please see our Full Range Catalogue for a summary of all the available dimensions & formats. This is downloadable on our website.



## Cost

Our price range is extensive & competitive. We offer Soft-Mud Handthrown clay bricks for every budget as well as mechanical, extruded bricks. Bricks are priced on a m2 rate as well as price per piece.

## Delivery

Please allow between 3 to 4 months for delivery from Europe to NZ, depending on stock availability. If Wienerberger need to go to production to supply, the timeline will be accurate, and you will be well-informed.

## Variation

Please be aware our clay bricks may vary in colour texture & shape being a naturally fired clay brick. Photographs will vary and samples sent may also vary from the final production. This is the nature of natural brick.

## Table of Contents

Dark	4	White	50
Brown	9	Beige	56
Copper	14	Yellow	65
Grey	16	Glazed	69
Purple	28	Brick slips	70
Recycled-look	29	Iluzo bricks	71
Red	39	Special Shapes – refer to main Catalogue	

## Dark bricks



Ajana



Marono Braised



Wenga Black



Special Black



Kari



Marono Braised Extra



Colonia Black



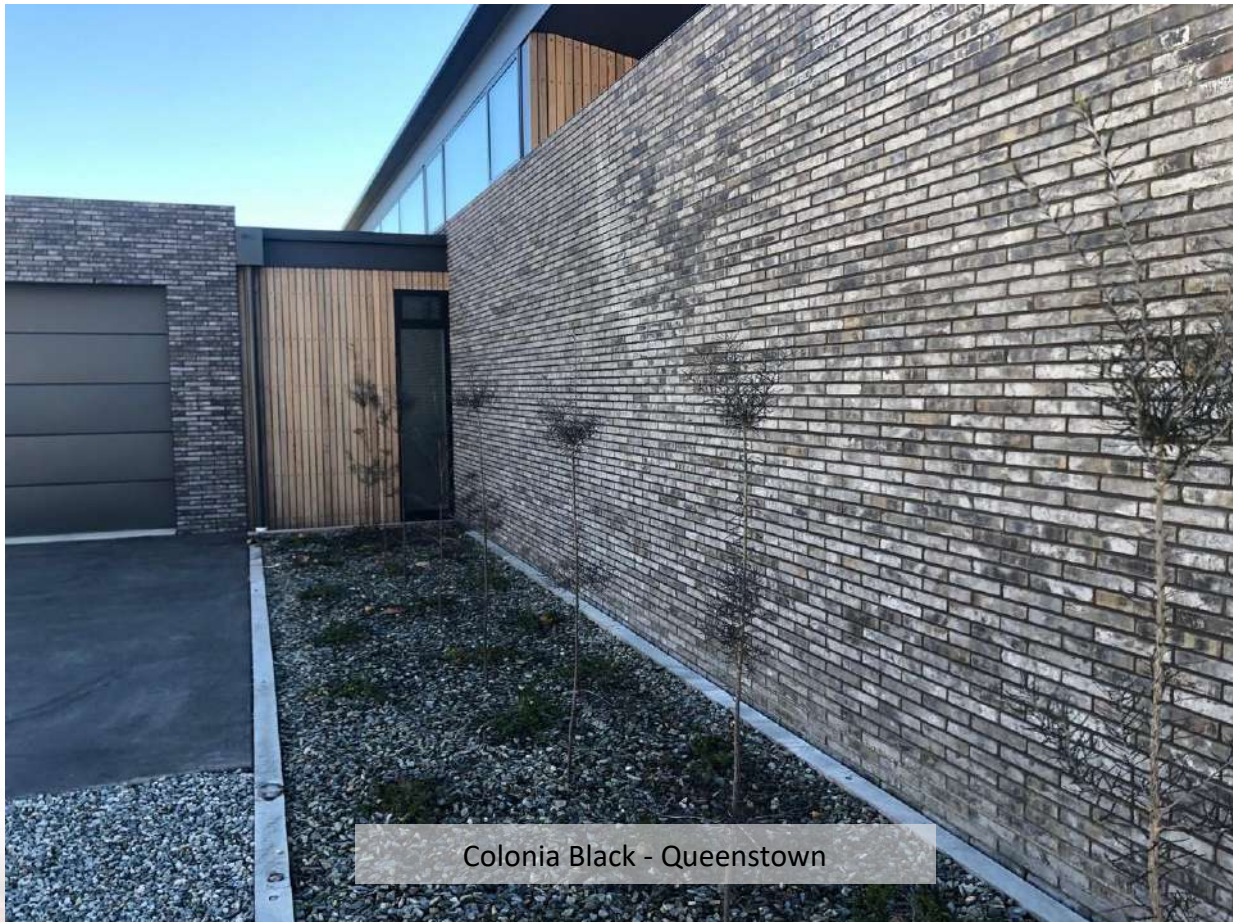
Linnaeus Graphite Black



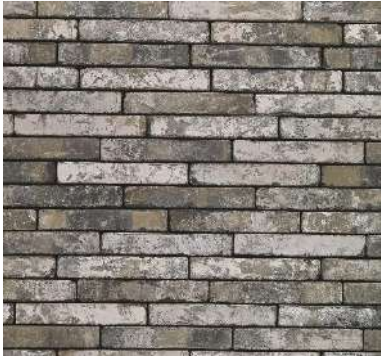
Maivi



Colonia Black - Queenstown



Colonia Black - Queenstown



Vesta Black



Agora Graphite Black



Cassia Black



Malo



Nuno



S1



Sargas



Elanie



Kul



Special Volcano Black



Amia



Liko



Cassia Black - Auckland



Sort Onyx



Siro



Manganese Black



Etna VB



Marowijne



Nublado



Moana (Helsinki)



Thorn Black



Etna HV

## Brown bricks



Barn Brown



Marono Brown



Marono Brown Extra



Civitas Brown



Pagus Purple



Urbis Brown



Elmore

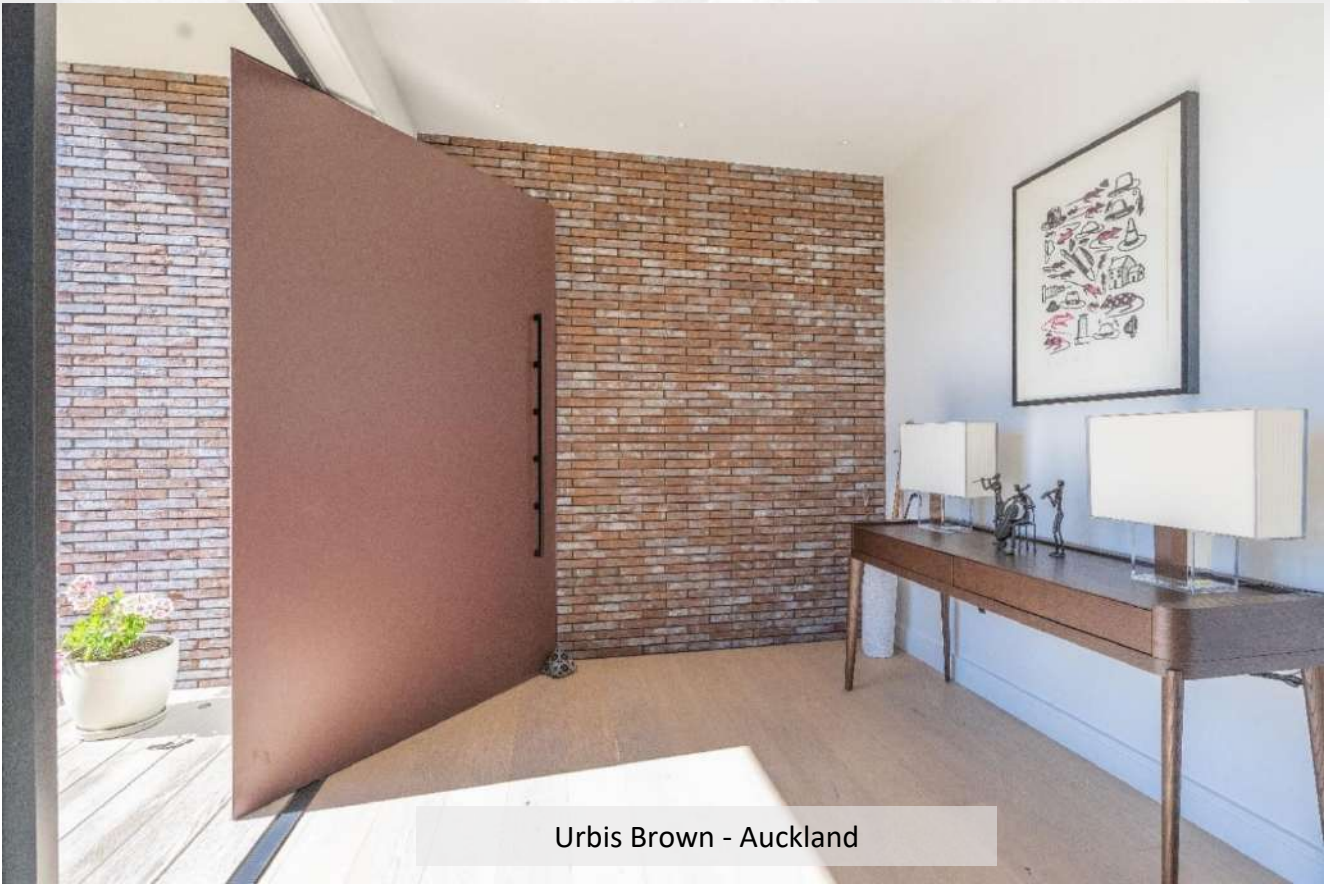


Old Roman

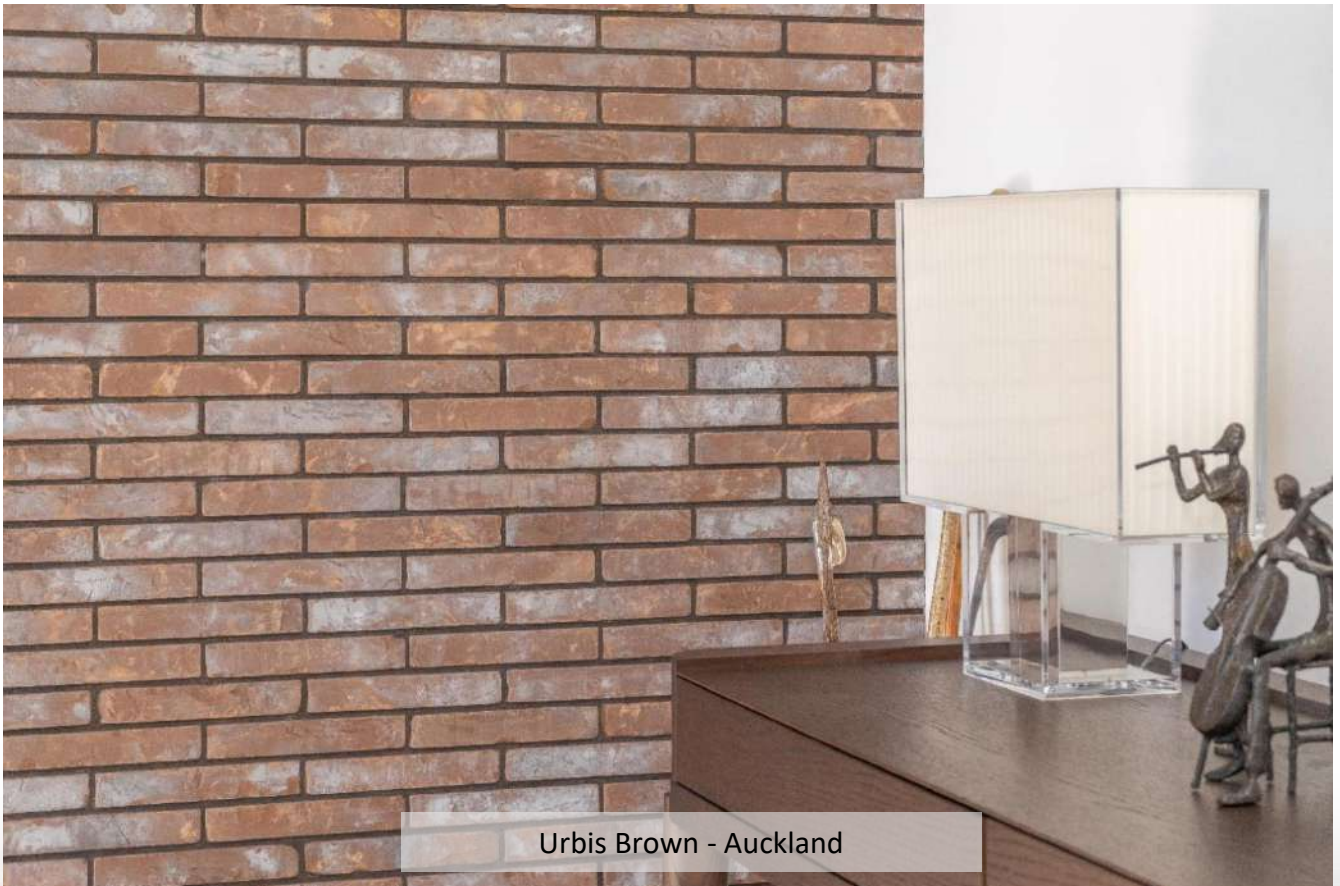


Pagus Brown





Urbis Brown - Auckland



Urbis Brown - Auckland



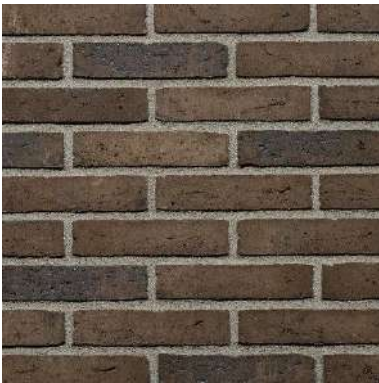
Pagus Brown Black



Parido (Svendborg)



Arona



Cosmos Exclusive



Topaas



Ivani



Kogelbloem



Latero Castana



Tehani



Tano



Hiwa



Dara



Pollux



Rhone Exclusive



Patina



Vulcano



Tian



Strato Coal



Strato



Mahogany



Magistrada Maestra



Kiano



Graklit



Grafit



Rutiel



Valmue



Brun



Bison



Bison Coal



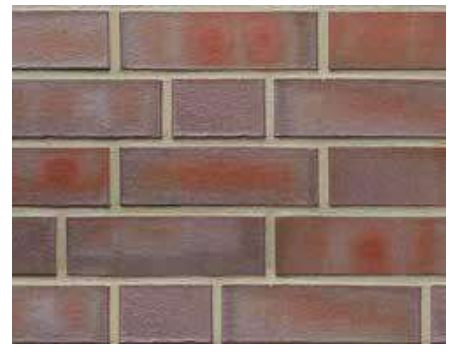
Mastiek



Dorado



Polaris



Kaipo



Fena

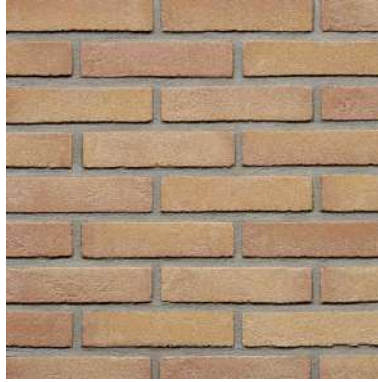


Lapis

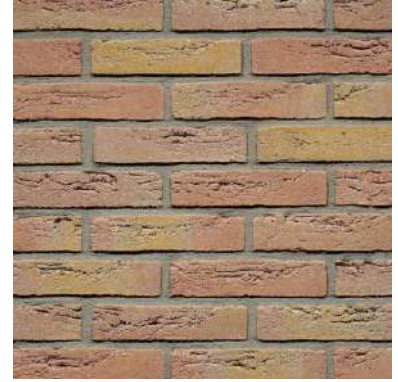
## Copper bricks



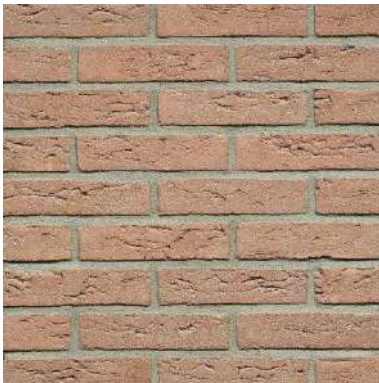
Haru (Luna 435)



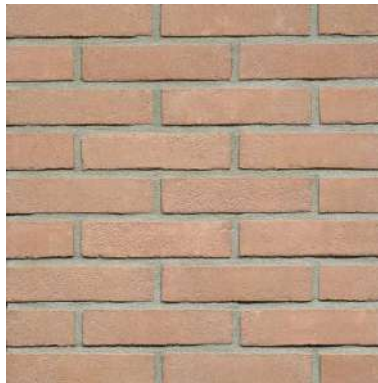
Beige Red



Emmels Brons



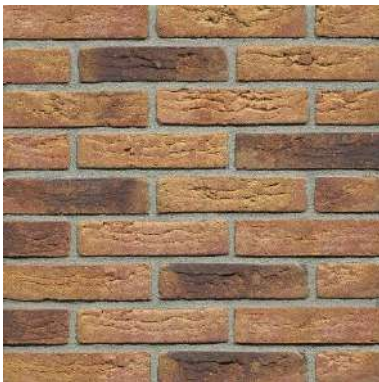
Euroa HV



Euroa VB



Old Elst



Peony



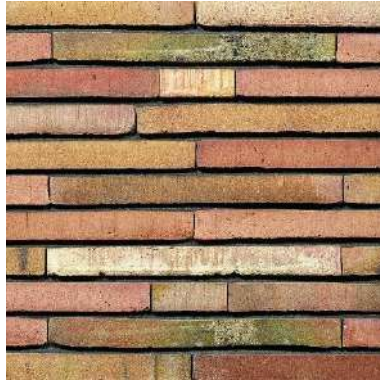
Nuance Timmantiek



Nuance Timmantiek Reduced



Zeist Tartan



Magistrate Dignity



Magistrate Dignity – International project

## Grey bricks



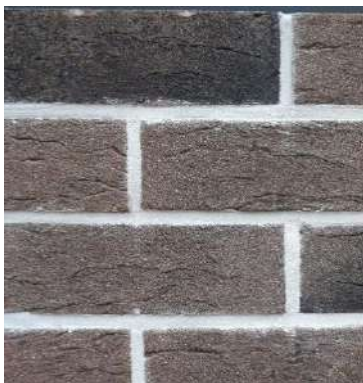
Frost Grey



Argento



Magma Grey



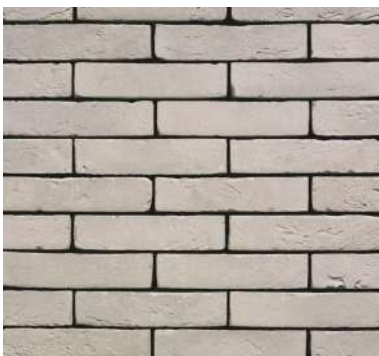
Leo



Sonic Grey



Agate Grey



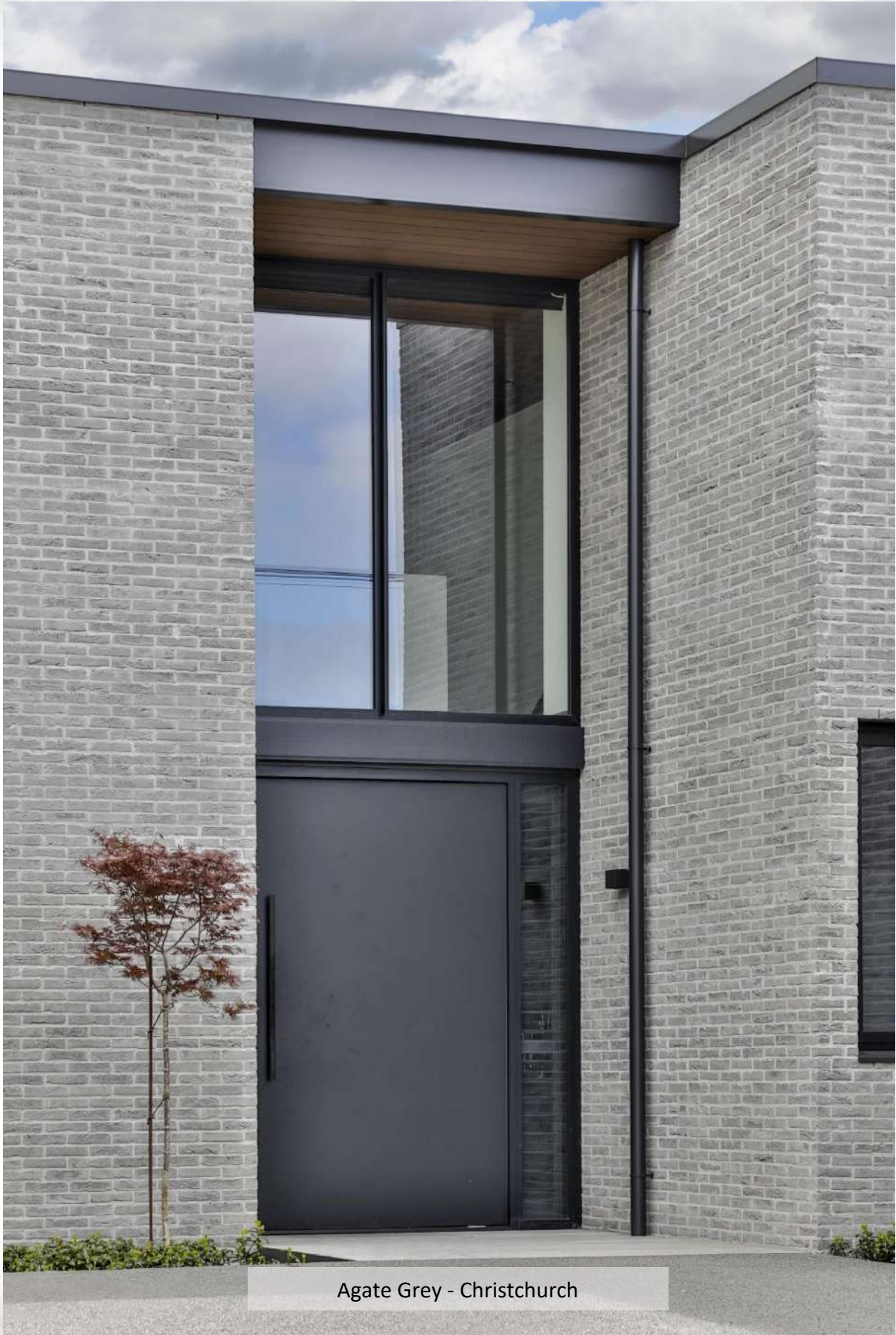
Silver Grey



Titanium Grey



Moon Grey



Agate Grey - Christchurch





Kirchimmen Silverline



Kirchimmen Silverstone



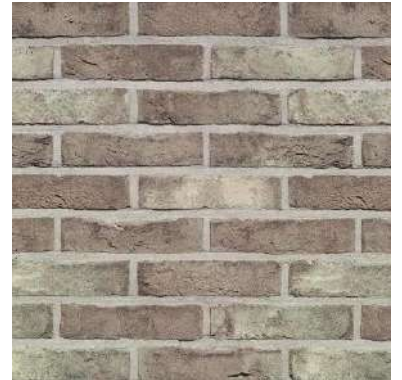
Kalmar



Pagus Grey



Pagus Grey Black



Pastorale Braised



Tan grey



Valeta



Vilnius



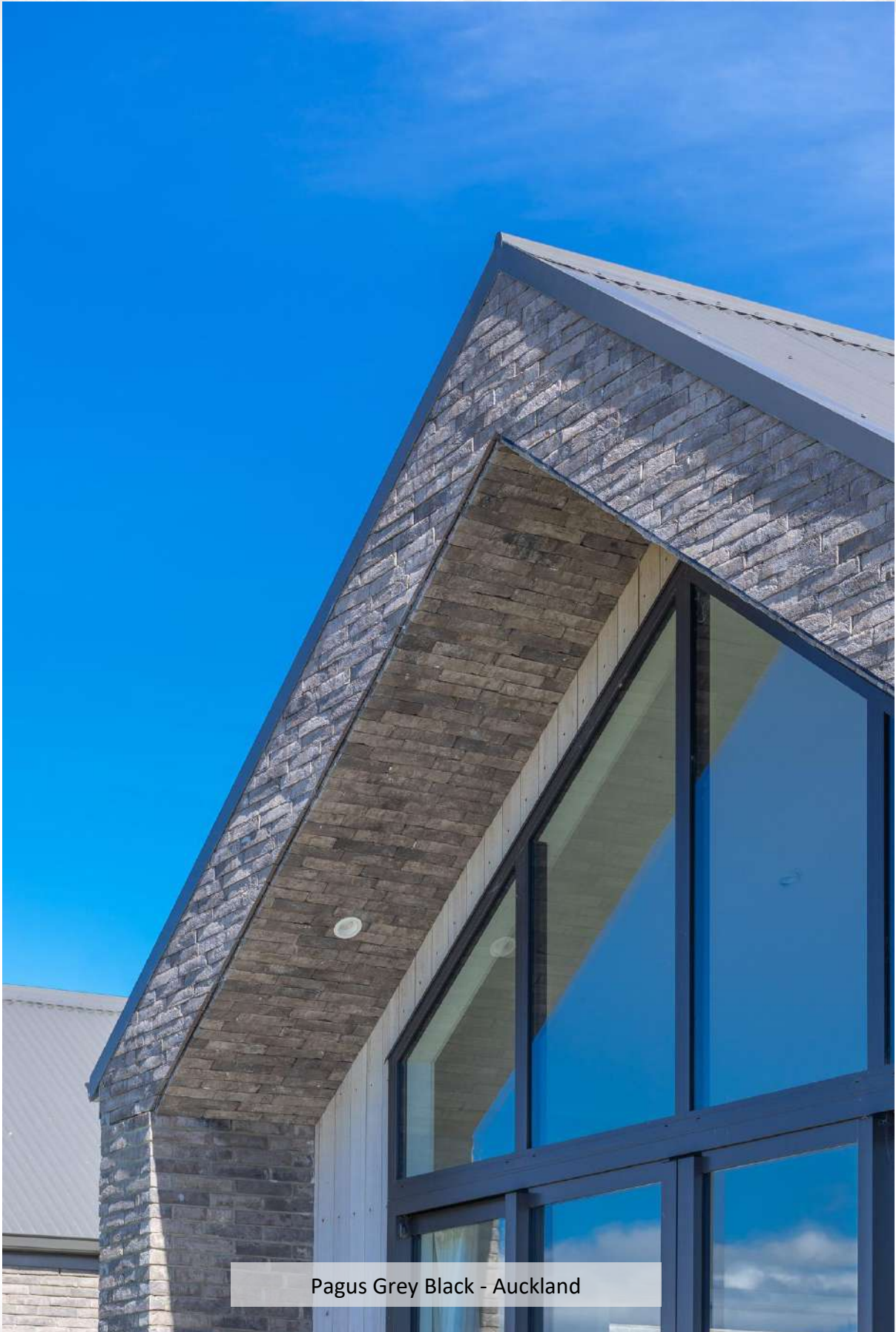
Nerus



Notus



Riego Plata



Pagus Grey Black - Auckland



Pagus Grey Black - Auckland



Plaza



Malu



Optima



Special Grey



Quarts Grey



Special Sable



Nako (Silverline)



Nohea (Silverstone)



Gloom Grey



Silt Grey



Suria Grey



Royal Cloud



Special Sable - Auckland



Special Sable - Auckland



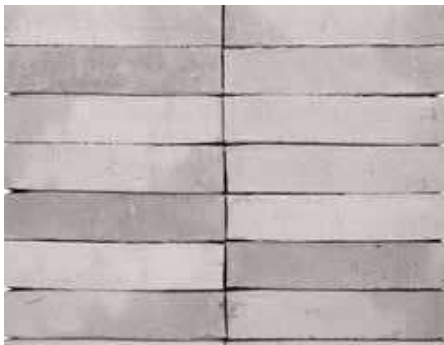
Stal LESS



Sisteron



Silva Greige



Niara



Old Bachte



Remo Grey



Grey Etna



Lumina



Misto Grey



Nebula



Silvo Grey



Rino Grey



Old Laethem (Old Bachte) - Arrowtown



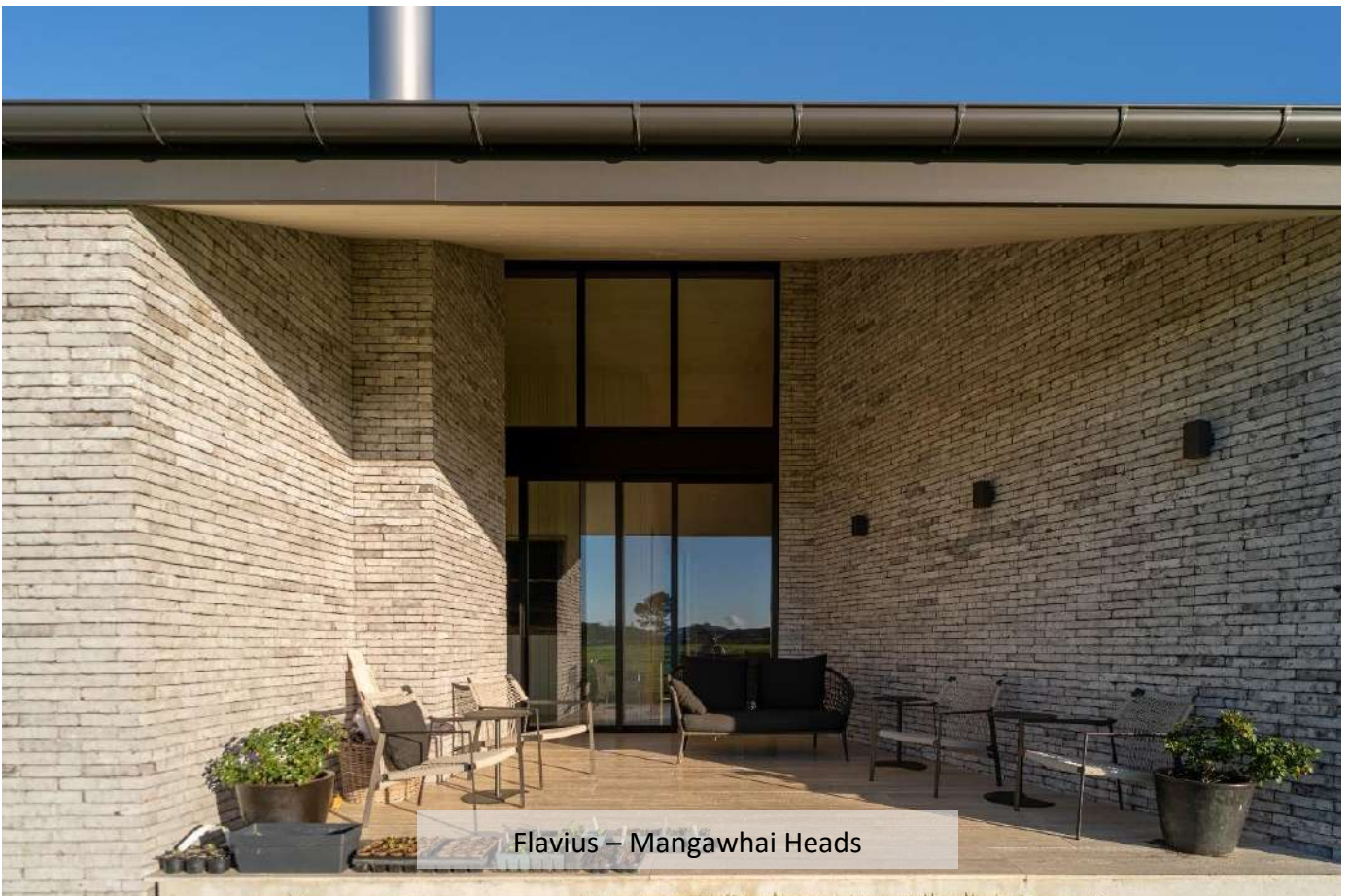
Jern



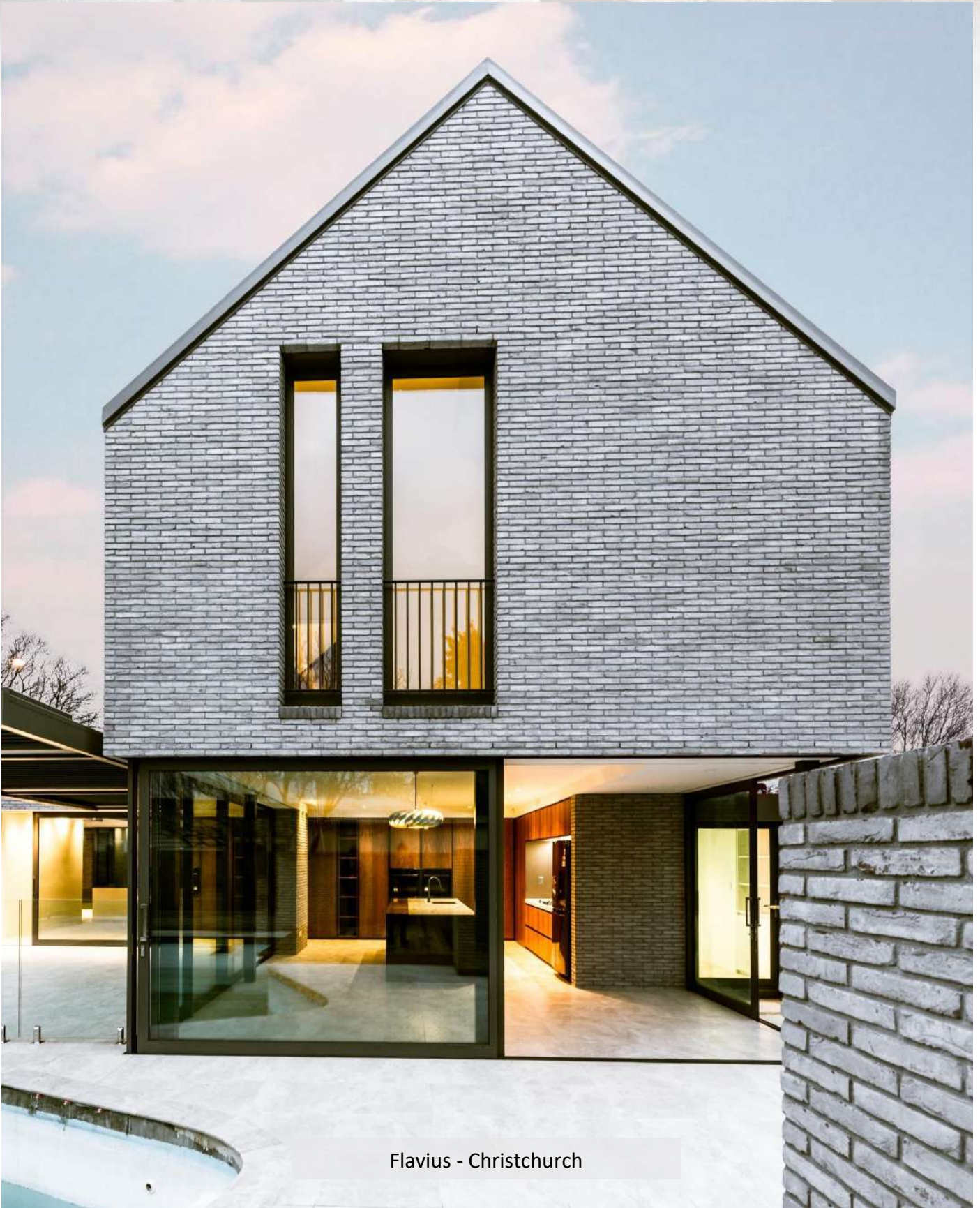
Grey Smoke



Flavius



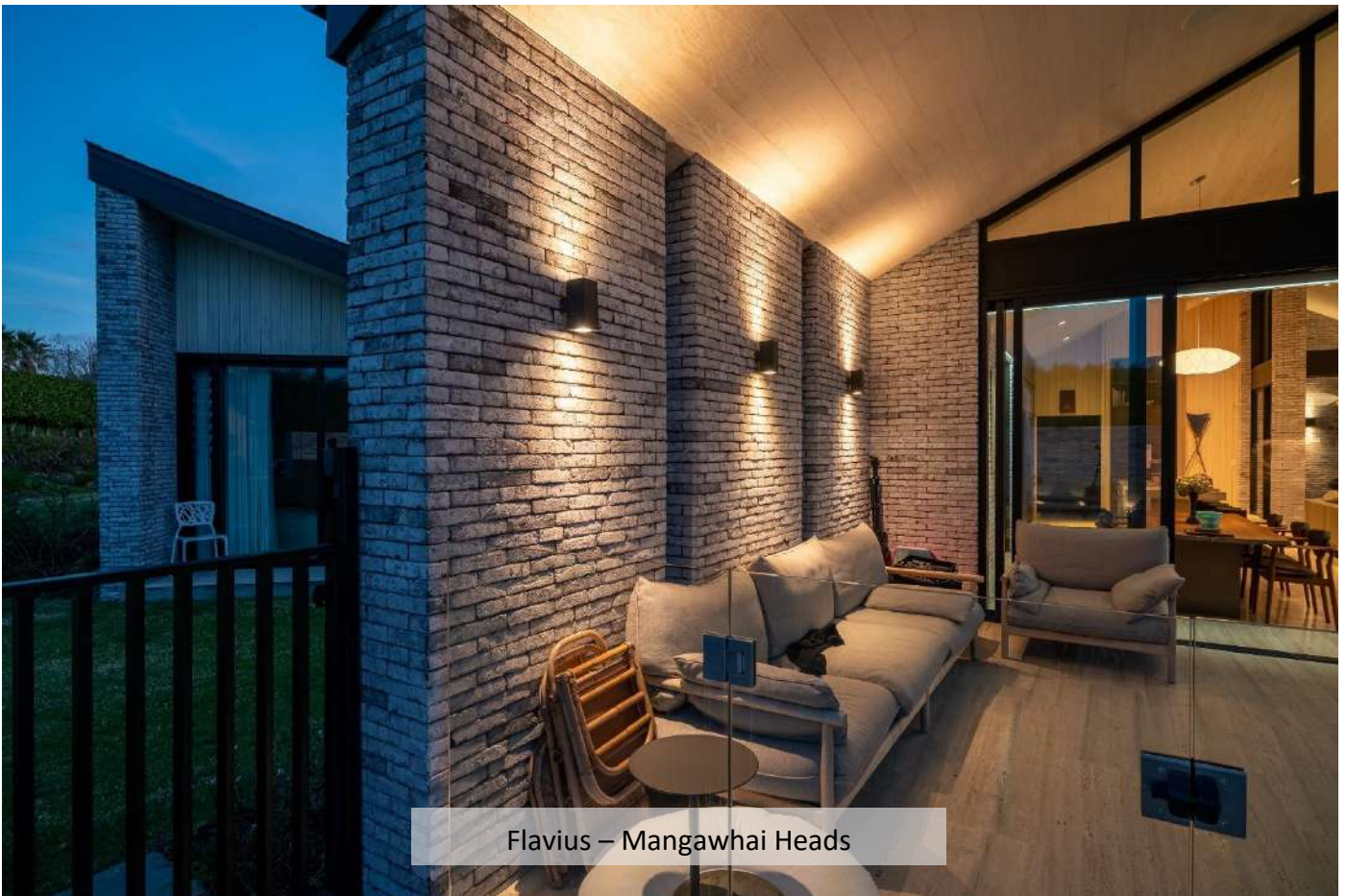




Flavius - Christchurch



Flavius - Christchurch



Flavius – Mangawhai Heads

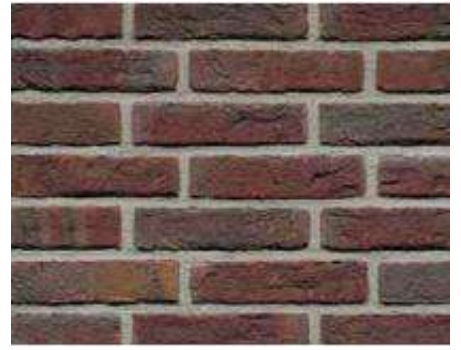
## Purple bricks



Bahati



Kimo



Blue Red Nuanced



Blue Red Nuanced Sintered



Camarque



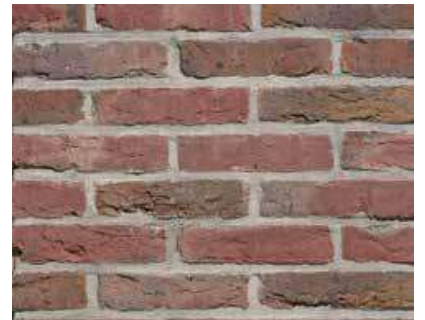
Douro Porto



Douro Porto Reduced



Swettebont



Purple Blue

## Recycled-look Bricks



Jado Red



Amari



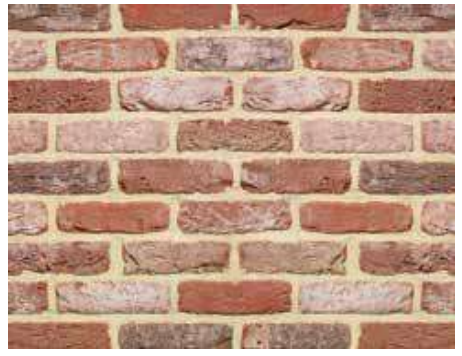
Balense



Retro Barn Stock



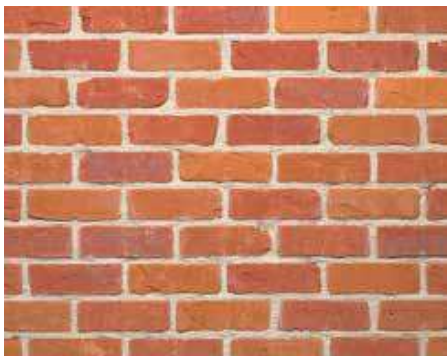
Retro Cottage Stock



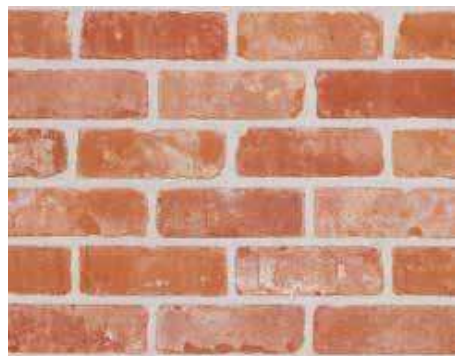
Belle Epoque De Namur



Belluno



Boomse



Brabantse



Belluno - Cambridge



Colorada



Keona (Campus 435)



Levanto



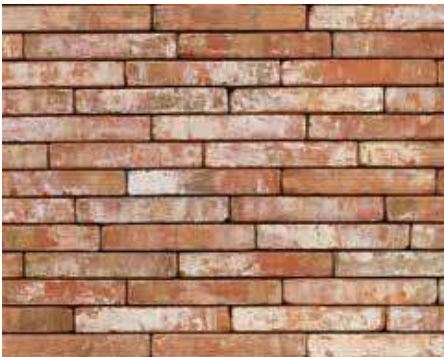
Maalbergse



Manoa



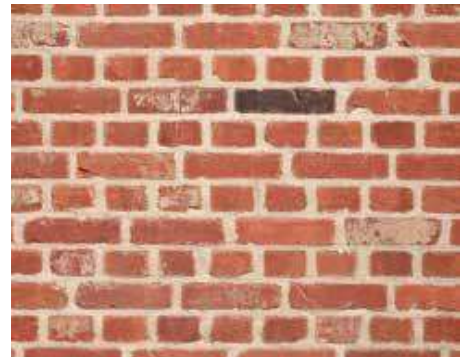
Meerse



Atrium Red



Verda



Molenlandse



Moran (Campus 430)



Old Bokrijk



Old Brussel



Atrium Red - Nelson



Old Kempisch



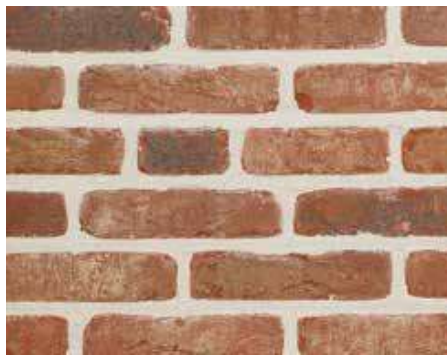
Old Malle



Old Marx



Old Nieuwpoort



Old Ravels



Old Veldsteen



Olense



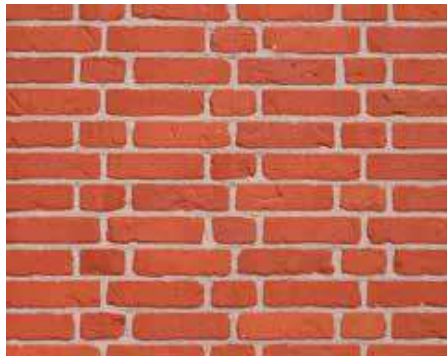
Ravello



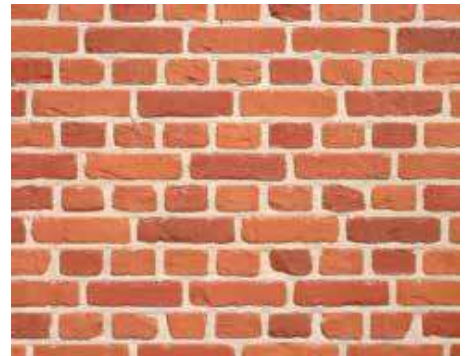
Retro Pastorie



Retro Tiffany



Rodelandse



Rupelse





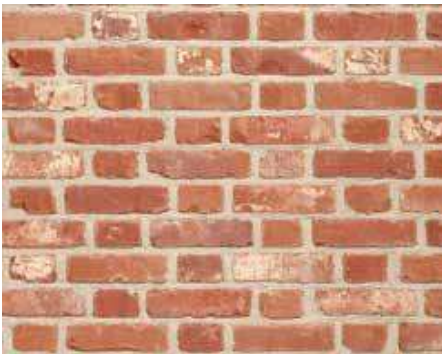
Rust



Terracotta Coal



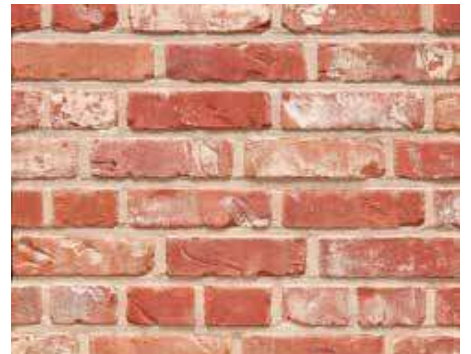
Terracotta



Tongerse



Whitby Red



Zevendonkse



Apollo



Appelbloesem



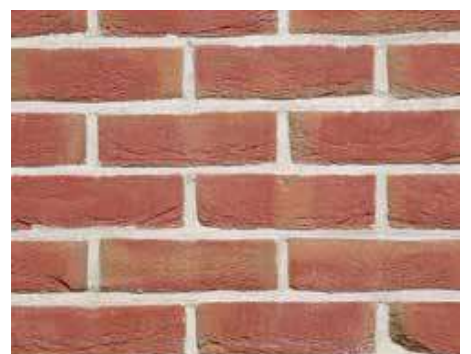
Barok '83



Blavand



Dolfino



Rose Wychen Reduced



Gotisch Antique



Hamburg Rustik



Heathfield



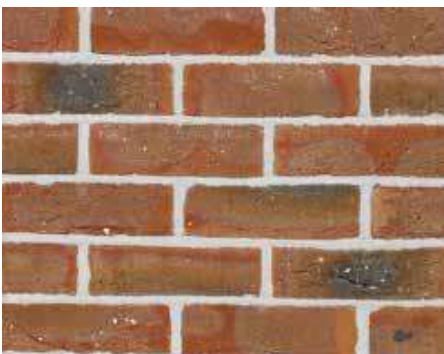
Kashtan



Kassandra



Kempley Antique



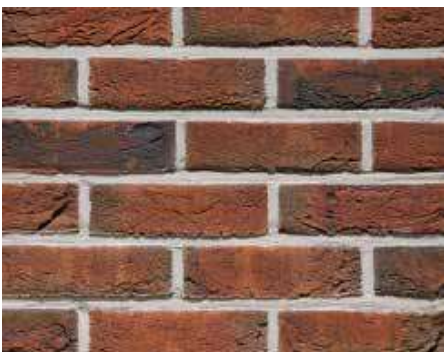
Klinkaert Mixed



Loxley Red Multi



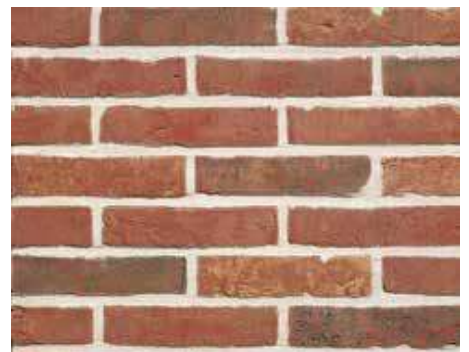
Mardale Antique



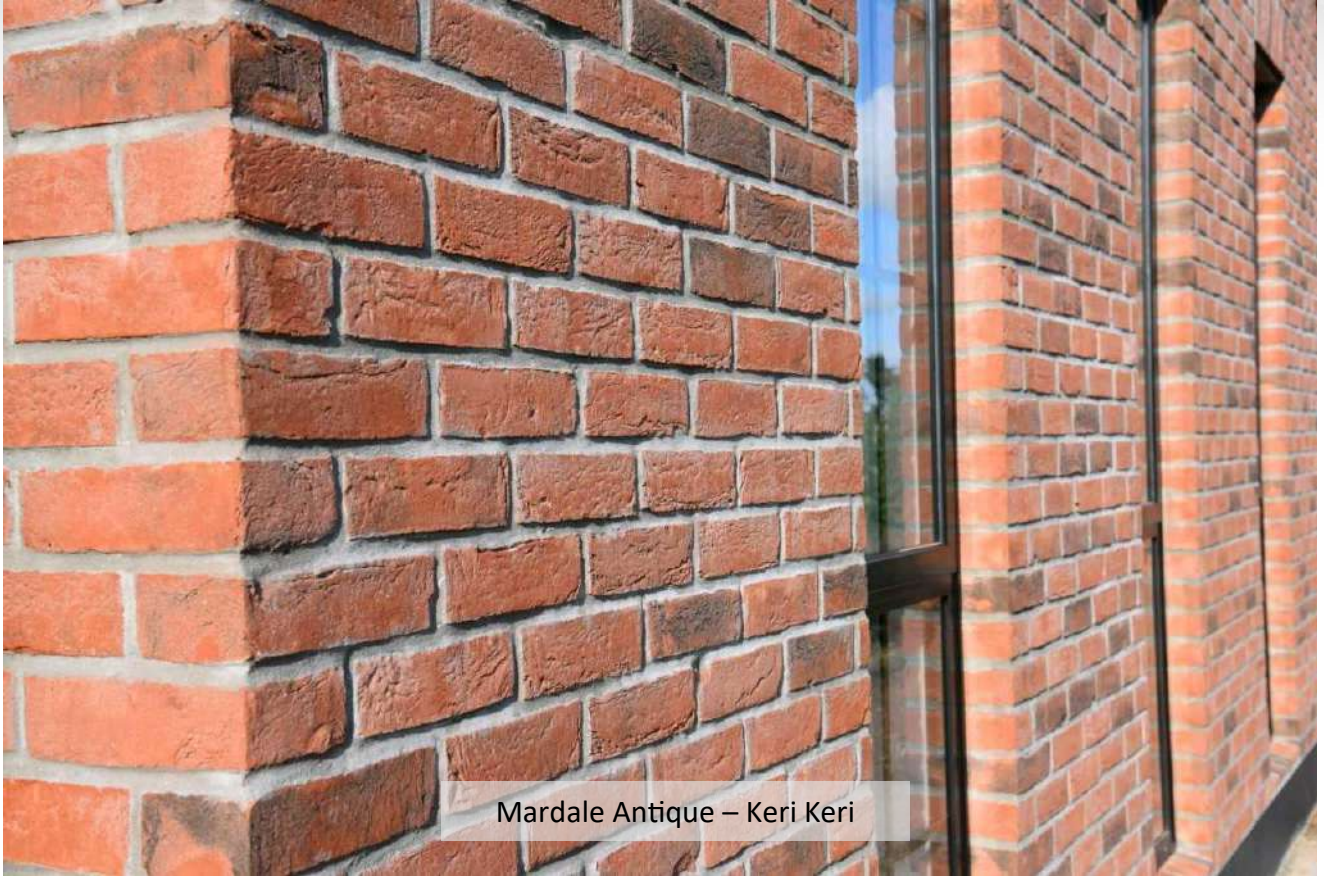
Morado



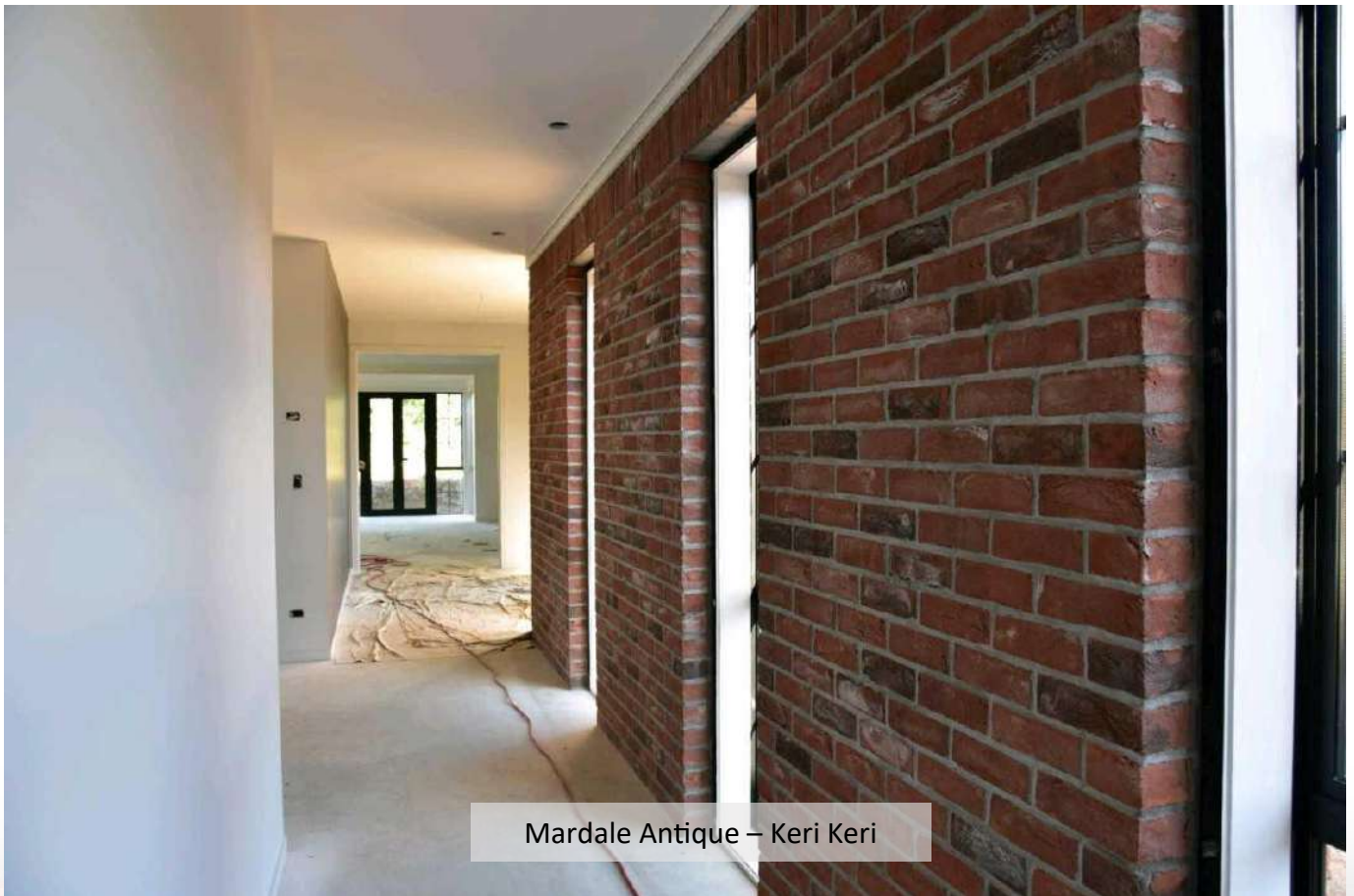
Neo Roman



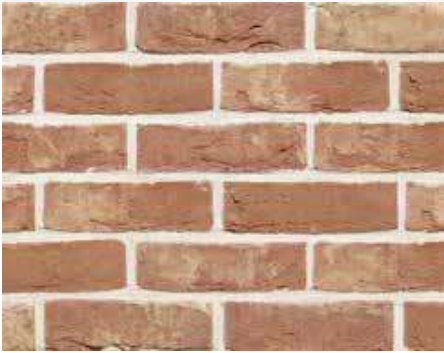
Olde Cheshire Red



Mardale Antique – Keri Keri



Mardale Antique – Keri Keri



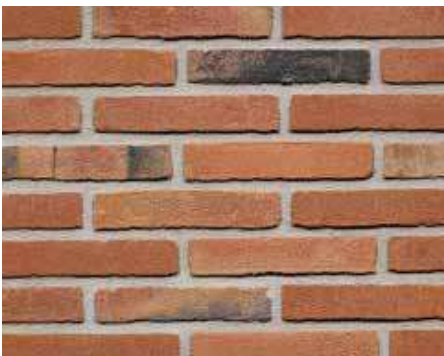
Opus



Pastorale



Red Kolengestookt Klinker



Red Kolengestookt



Red Purple Bont



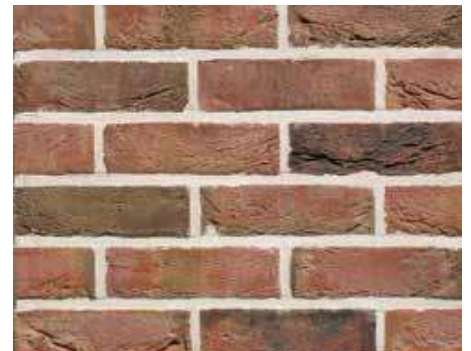
Renaissance



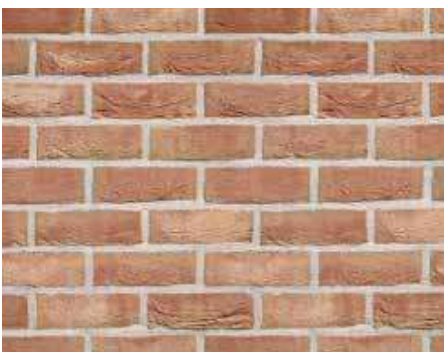
Saffier



Seaford Red Multi



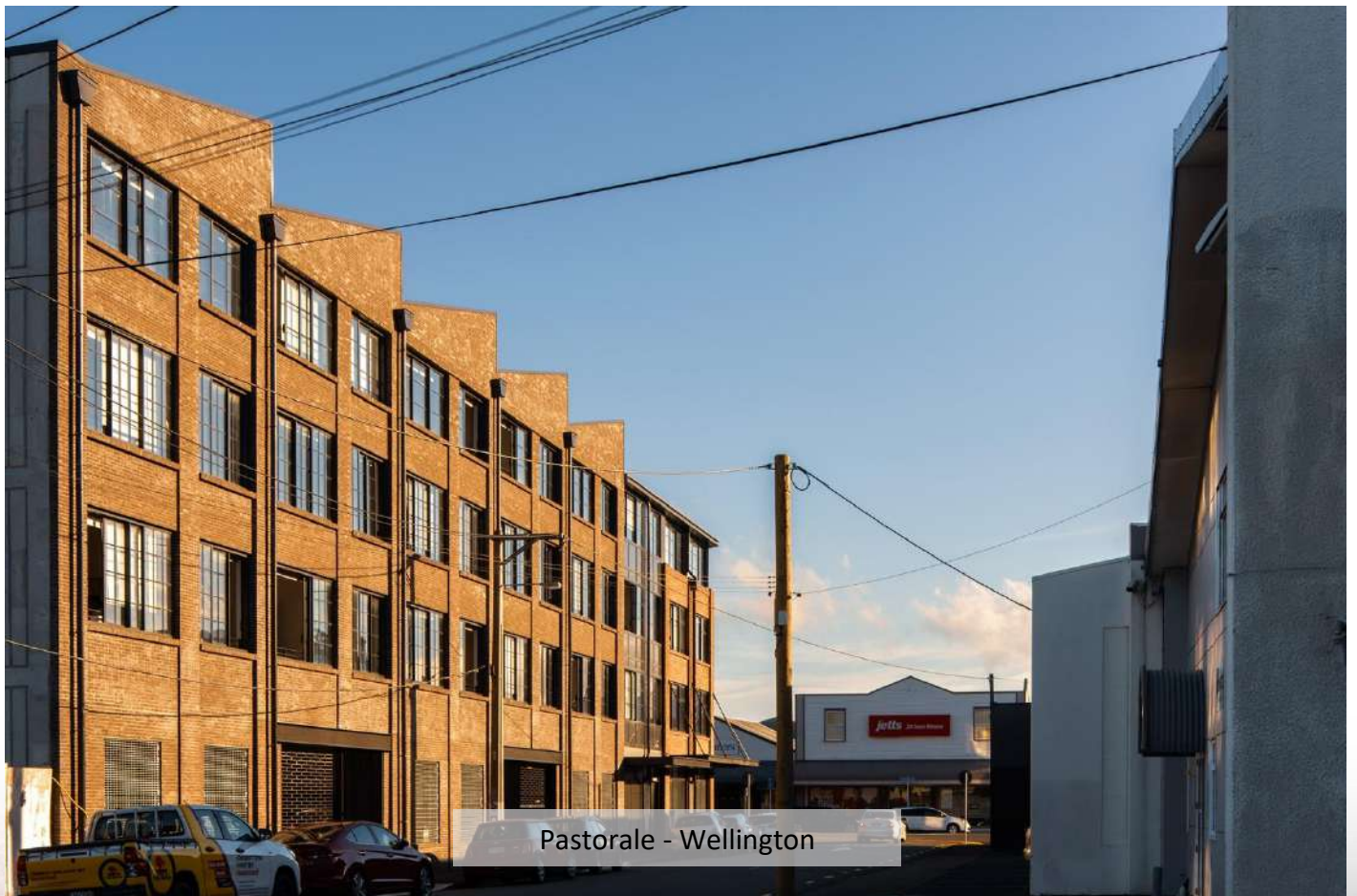
Topaas Heritage Blend



Zirkoon

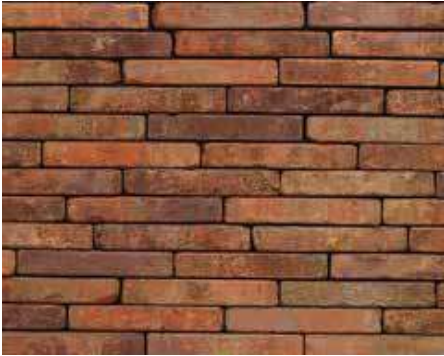


Pastorale - Wellington



Pastorale - Wellington

## Red Bricks



Aula Red



Gammel Red



Dyb Red



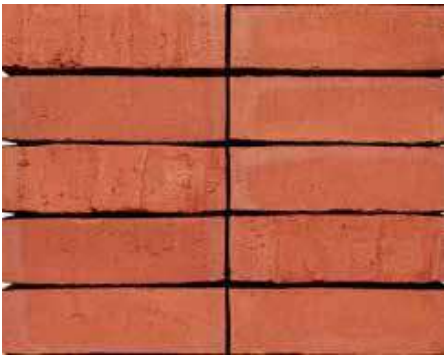
Edelsteen Jade



Aluna Rot Kohle



Hectic



Alani (Campus)



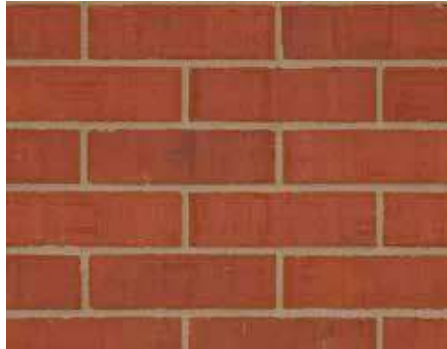
Anaro



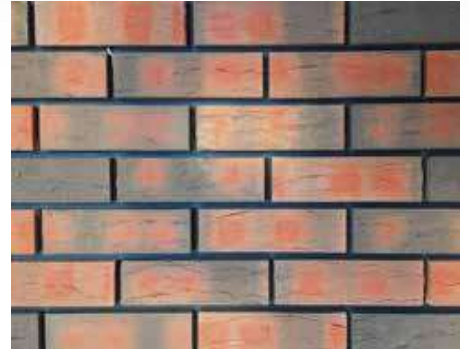
Andoni



Cassia Red



Chester Red Blend



Corbridge



Danai



Elia



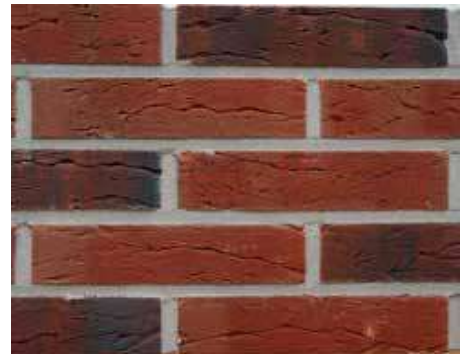
Robinia Red



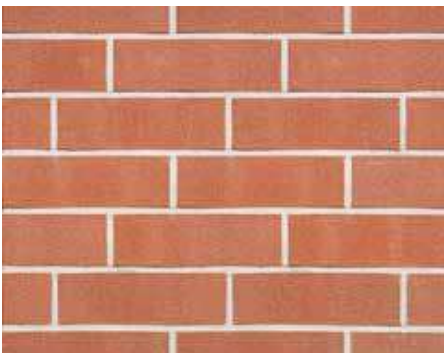
Betula (Orange)



Elva



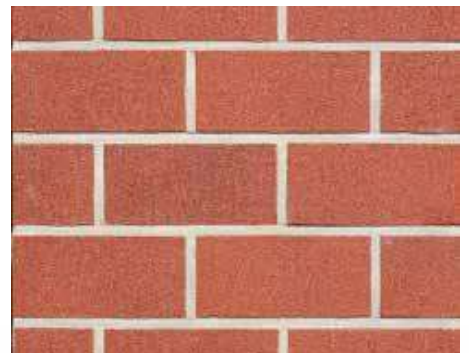
Gemini



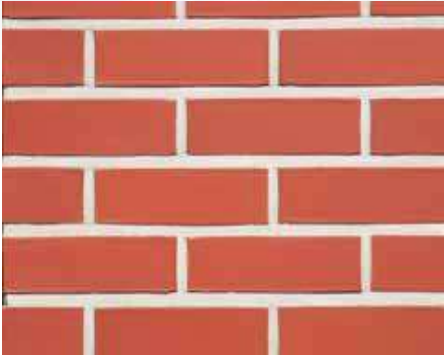
Iepers Red



Jona



Kempisch Red Sanded



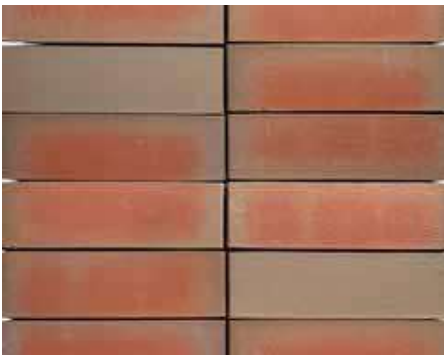
Kempisch Red Smooth



Kiran



Levana



Lovis



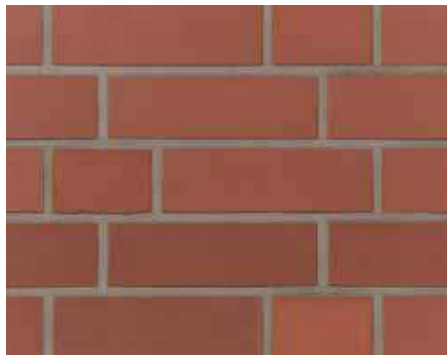
Madu



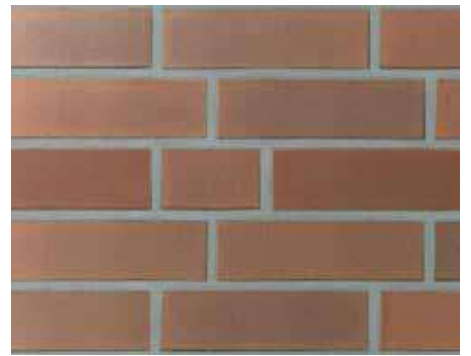
Marono Red Extra



Marono Red



Nava



Rodi



Siva

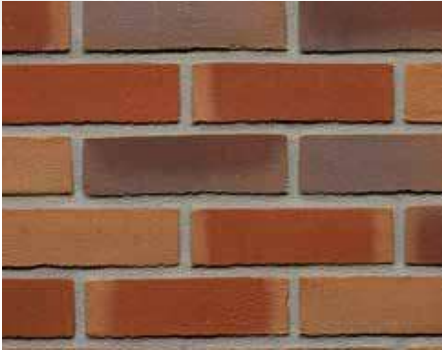


Tigo



Wanlin Red

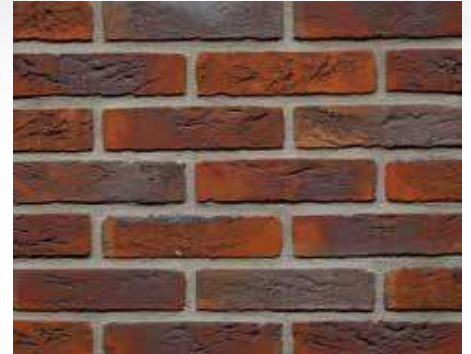




Aardered Nuanced Fantasy



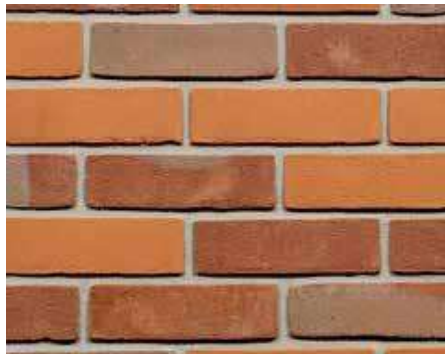
Agaat (Medium Blend)



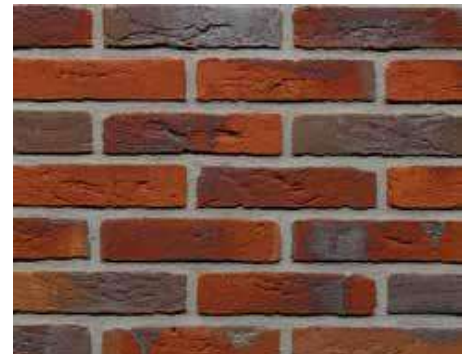
Agena



Wine Red



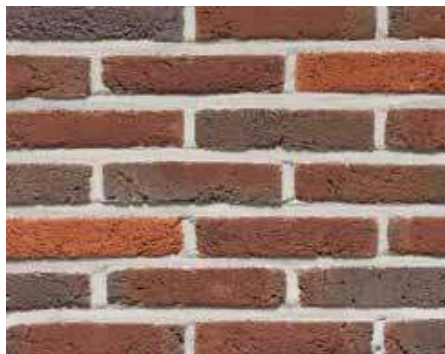
Aldberrry Red Mix



Altair



Althea Garden Stone



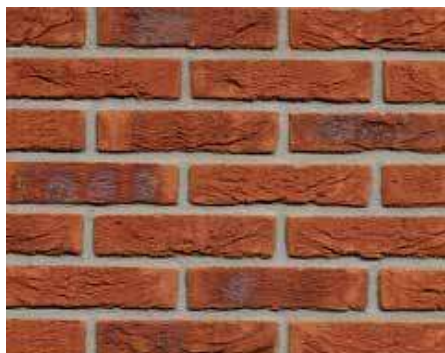
Alverna



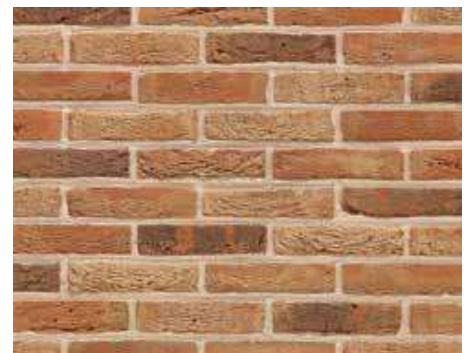
Amberley



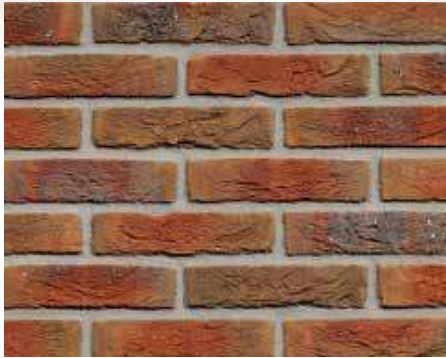
Ancona



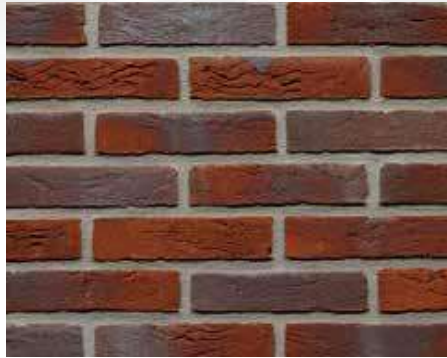
Andalucia



Arces Candy



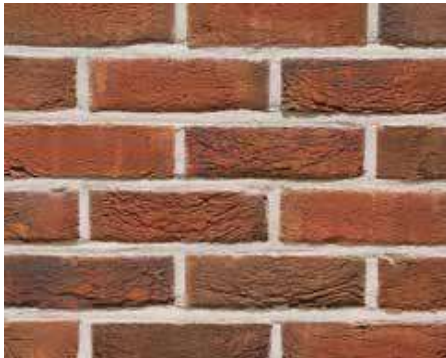
Asturia



Avior



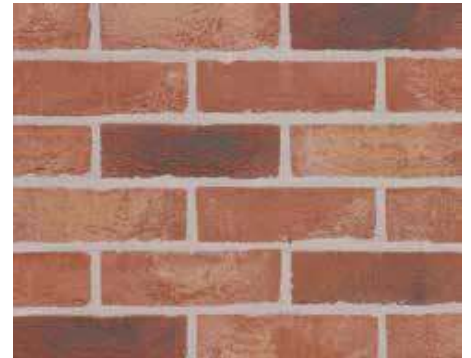
Balboa



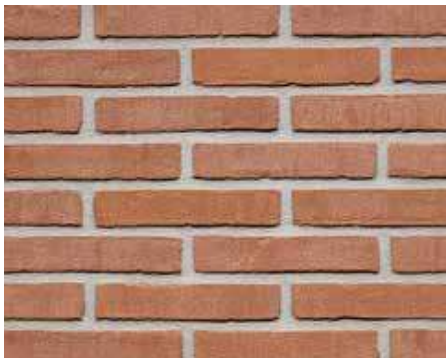
Belbrook



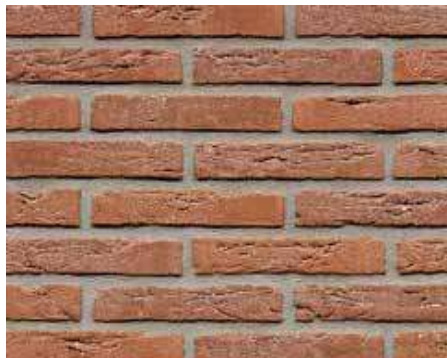
Belcanto



Bijou (Jewel Multi)



Bolero



Bostella



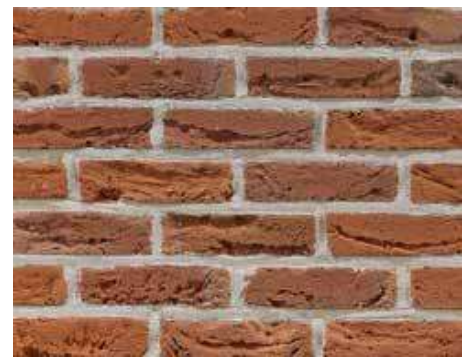
Bourgondie



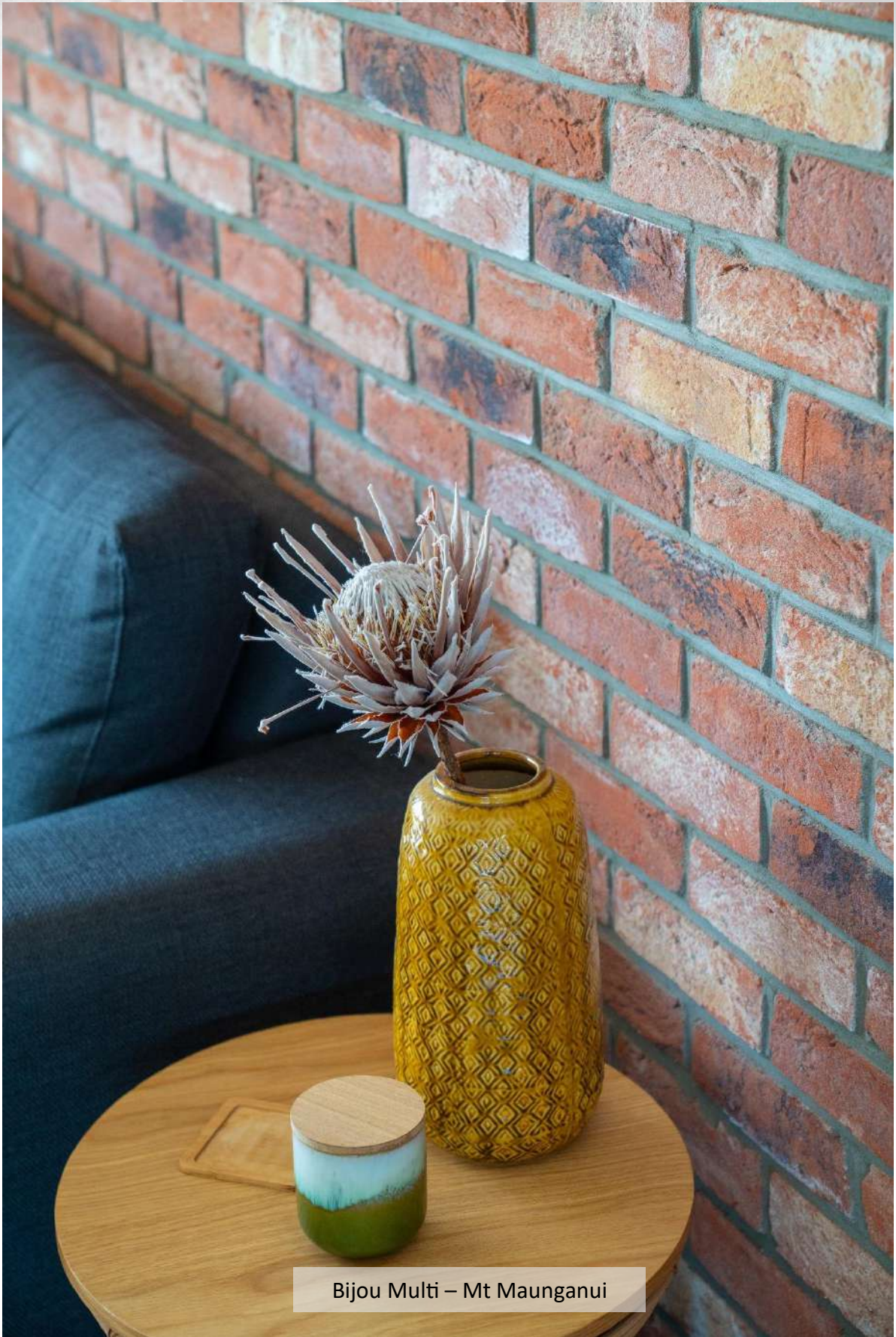
Catalunya



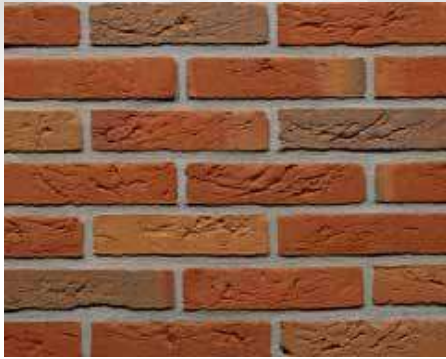
Cienna (Jasmine Blend)



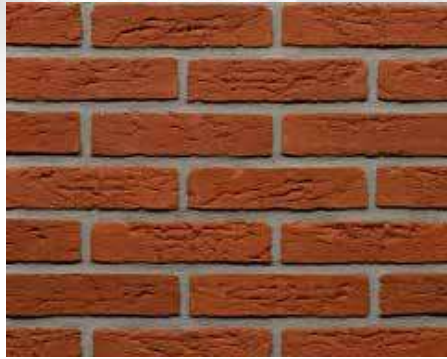
Commonwealth



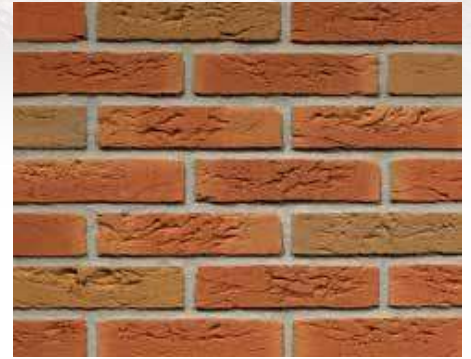
Bijou Multi – Mt Maunganui



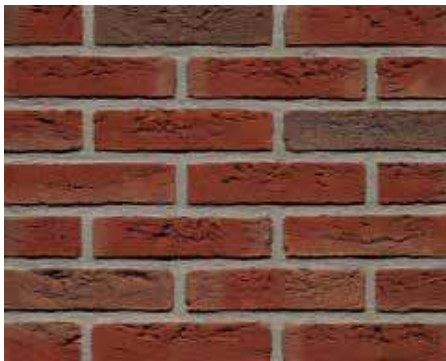
Dinkelred Flash



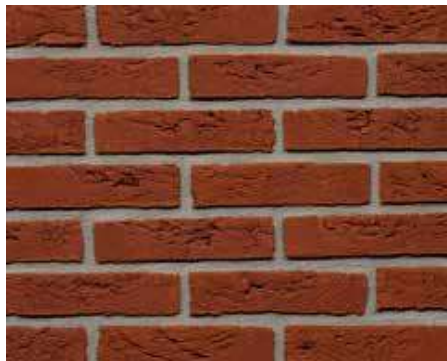
Dinkelred



Dinkelred Reduced



Dommel Red Reduced



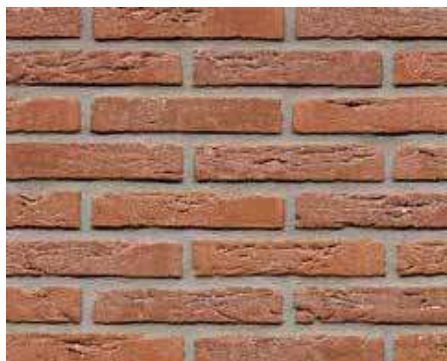
Dommel Red



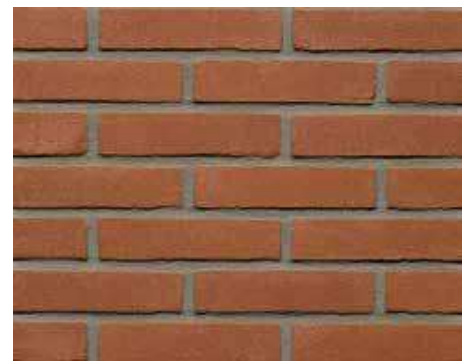
Donau



Edelsteen Kwarts



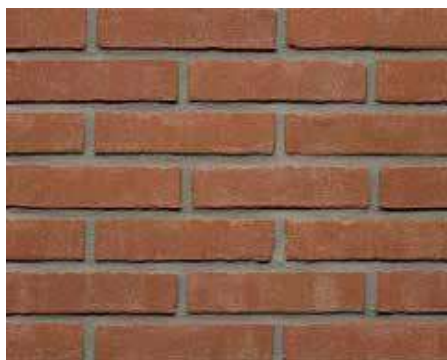
EdmontonHV



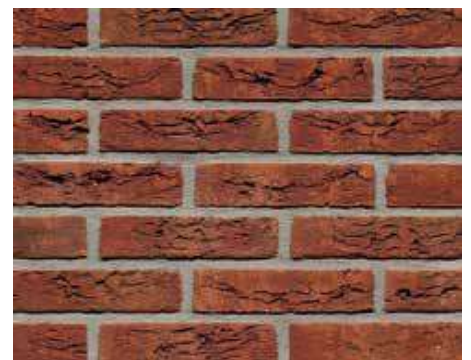
Edmonton VB



Elsterbont



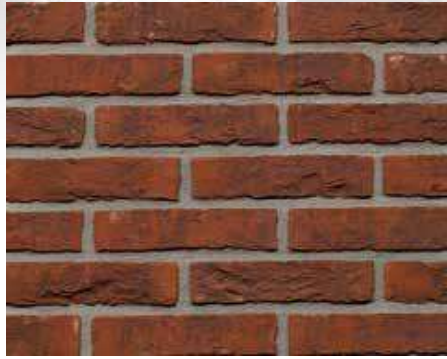
Erlecom



Espa



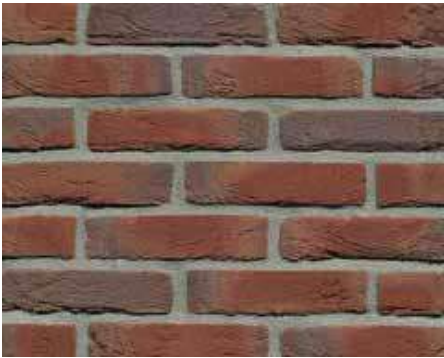
Pampas



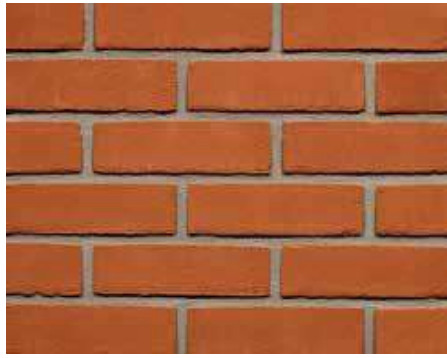
Galicia



Granada



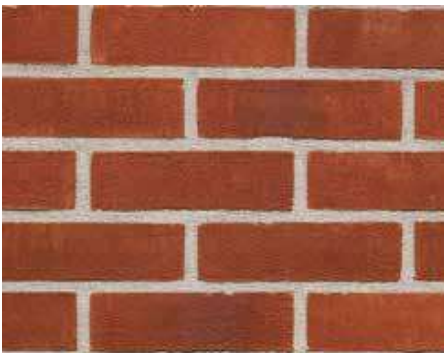
Heukelom



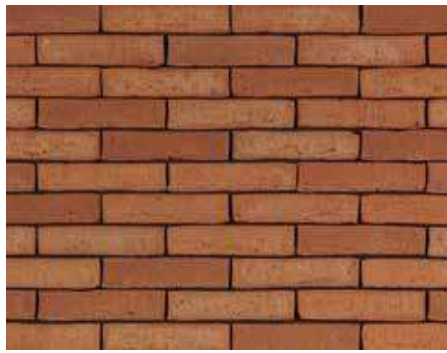
Irish Rose



Kastanje



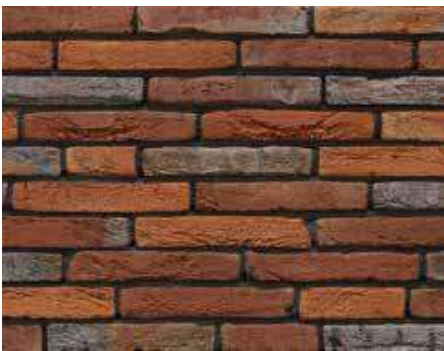
Koraalred



Latero Rubino



Latero Westcliff Weathered Red



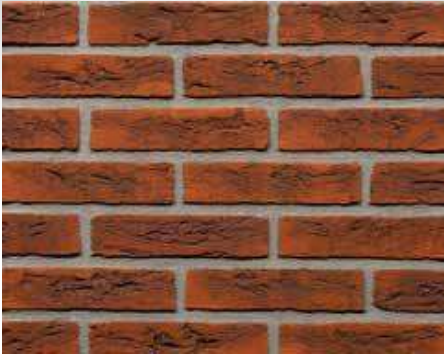
Linaqua Vino



Linaqua Viola



Loire Reduced



Loire



Maaseiker Bont



Marowijne Red Sand



Menton



Navarra



Olde Chelford



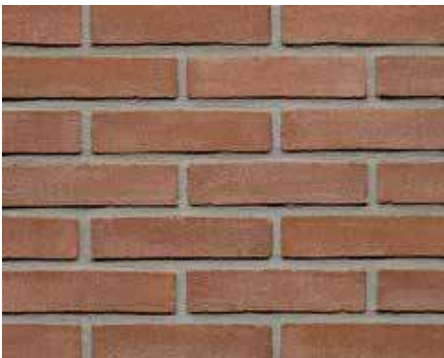
Olde Welwyn



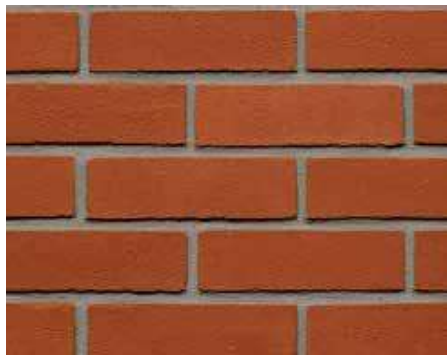
Olde Woodford



Olde Farndale



Old Rose



Oranje



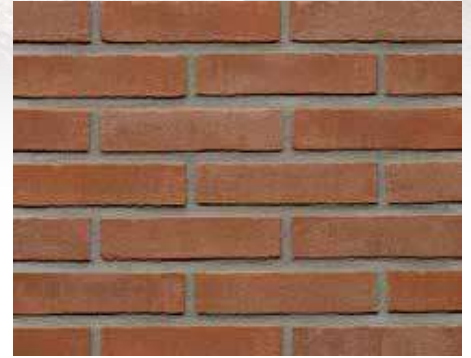
Paepsteen



Pagus Dark Red



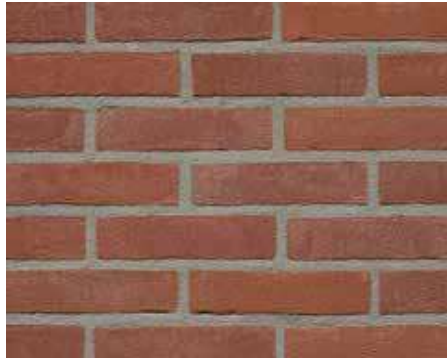
Rangemoor



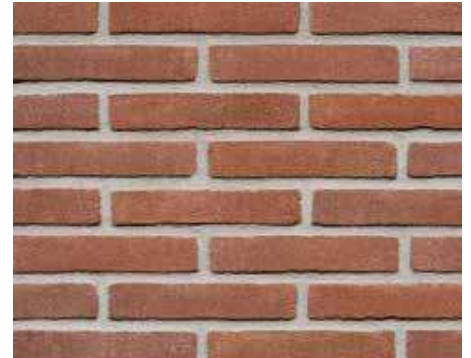
Red Brown



Red Gevelgrau



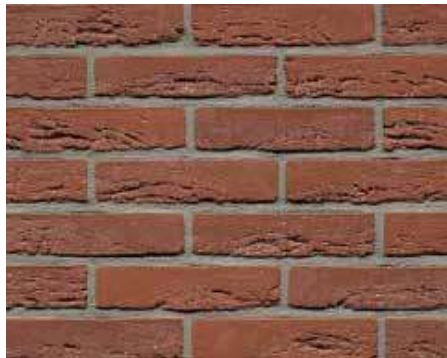
Red Grey Hardgrau



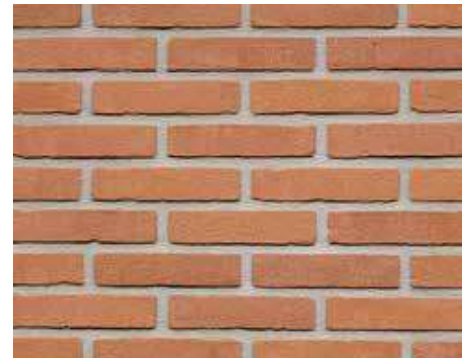
Red Grey Klinker



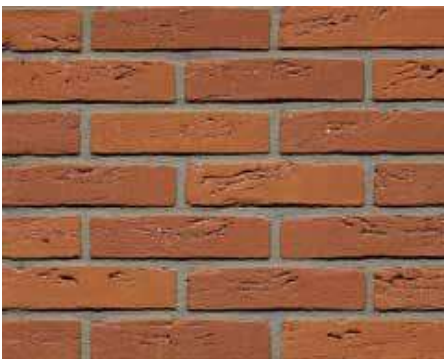
Red Grey Plint



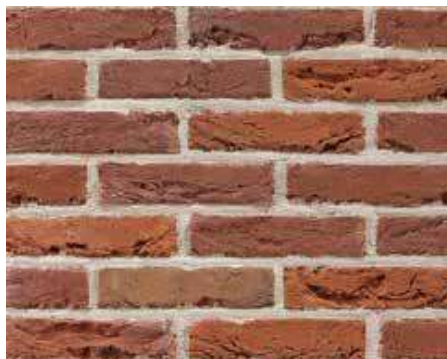
Red Grey



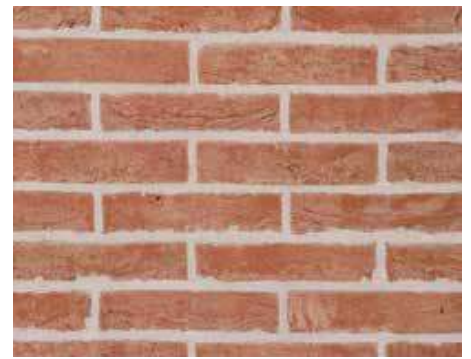
Red Hardgrau



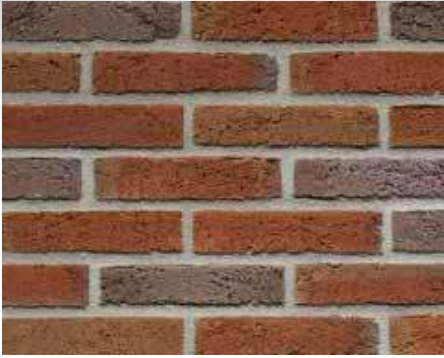
Red Nuanced Bommel



Red Nuanced



Red TN



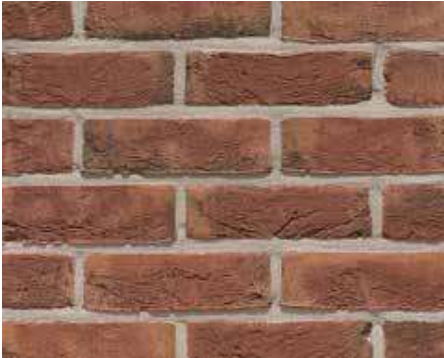
Sinter Blue



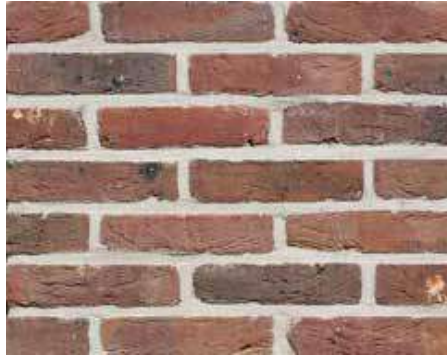
Spanish Red



Tolus Maya Purple



Trentino



Veldbrand Antique



Old York Russet



Waalred



Welham



## White Bricks



Nemo White



Dover White



Arctica White



Nordica White



Nevel White



Super White



Special White



Casa lena



Dove White



Special White - Hamilton



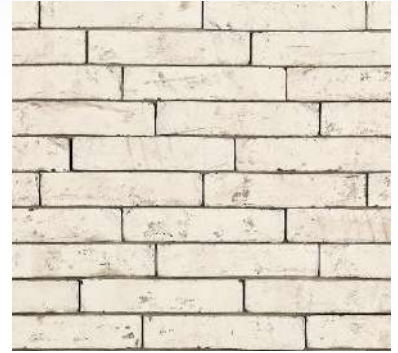
Special White - Hamilton



Antibes



Thorn White



Albius



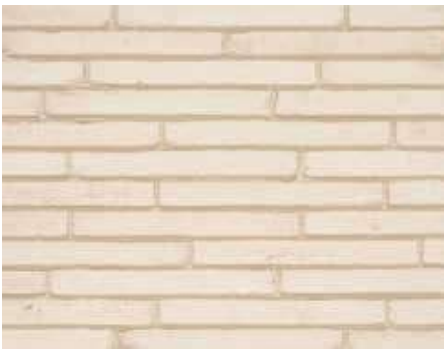
Riego Lona



Riego Venta



Puro White



Alaska White



Vanille White



Helios White



Albius - Christchurch



Albius - Christchurch



Avignon Coal



Avignon



Cassis Coal



Cassis



Flint



Halm



Hvede



Limoux

## Beige Bricks



Adeva (Limeline 420)



Light Coal



Duno Beige



Stendbjerg



Caven (Binz 430)



Cold Hawaii



White Gobi



Special Grey White



White Bonusus



St Ives



Salina Grey



Sila Grey



Old Kortemark



Old Torhout



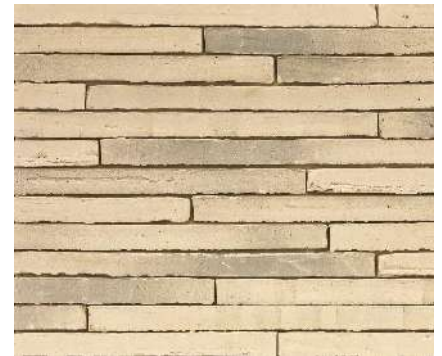
Retro Lautrec



Abbotsley Antique



Ivory White



Special Opal White



Edelsteen Saffier

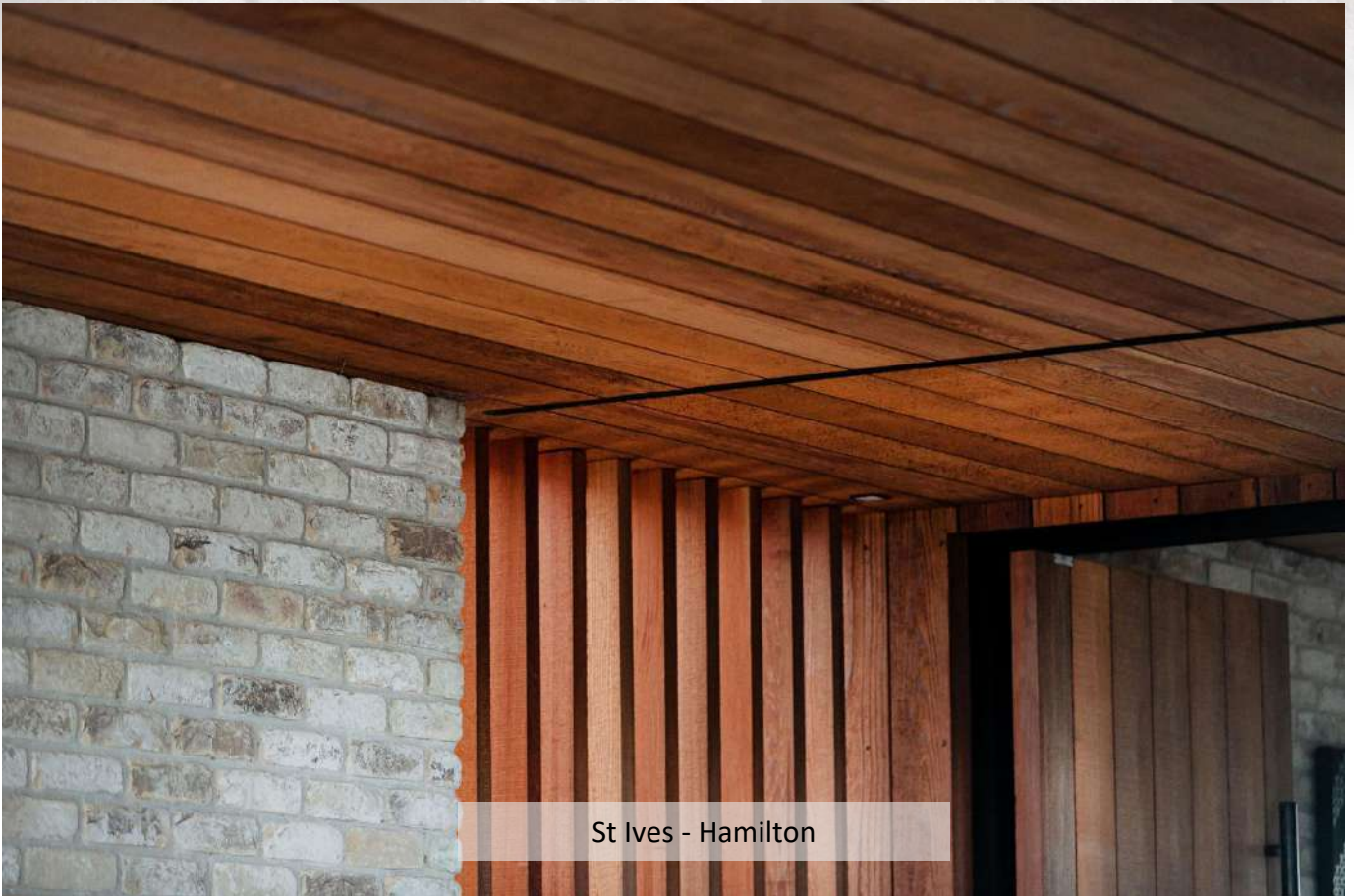


Brons Klinker

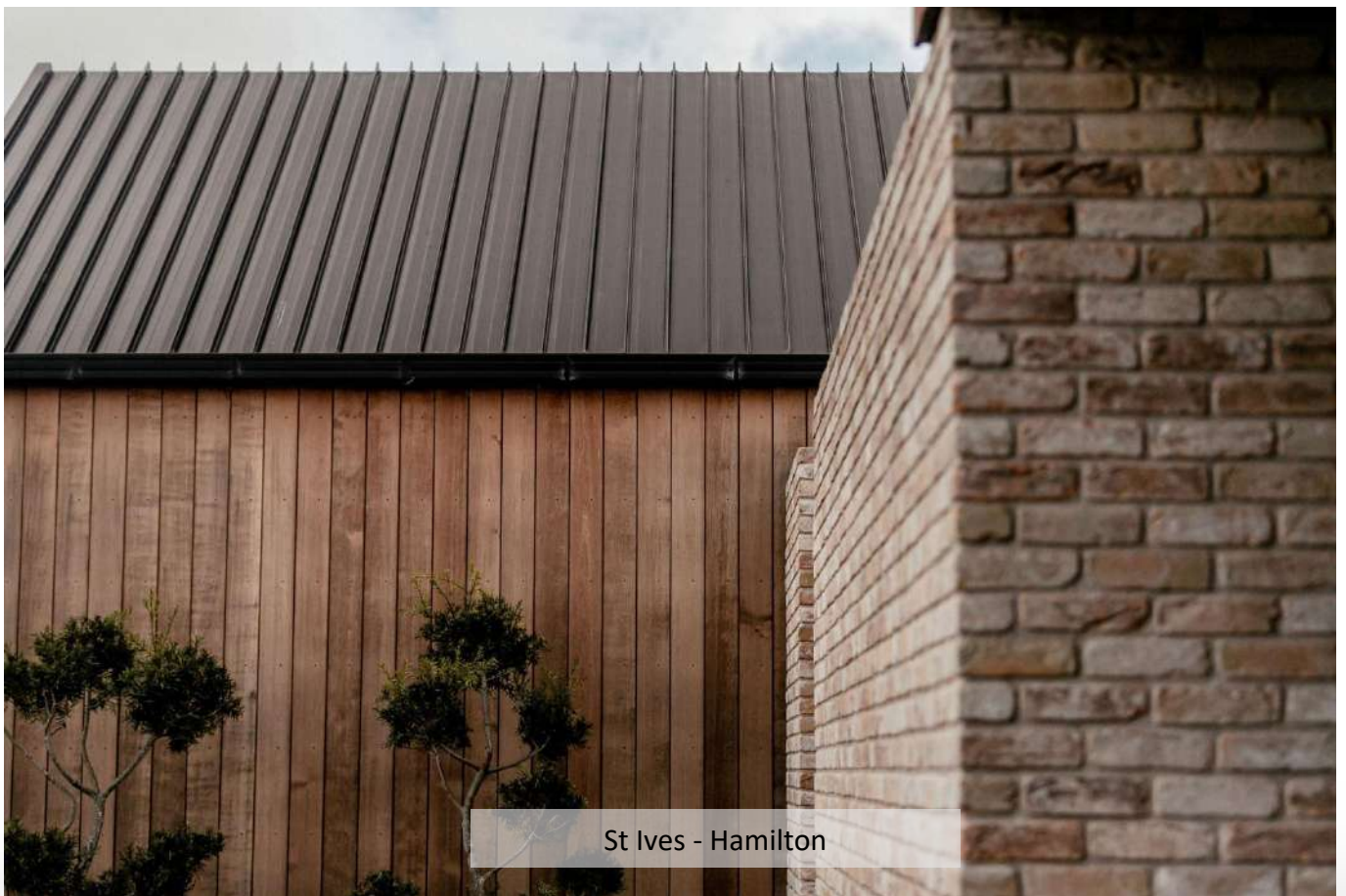


Old Diest

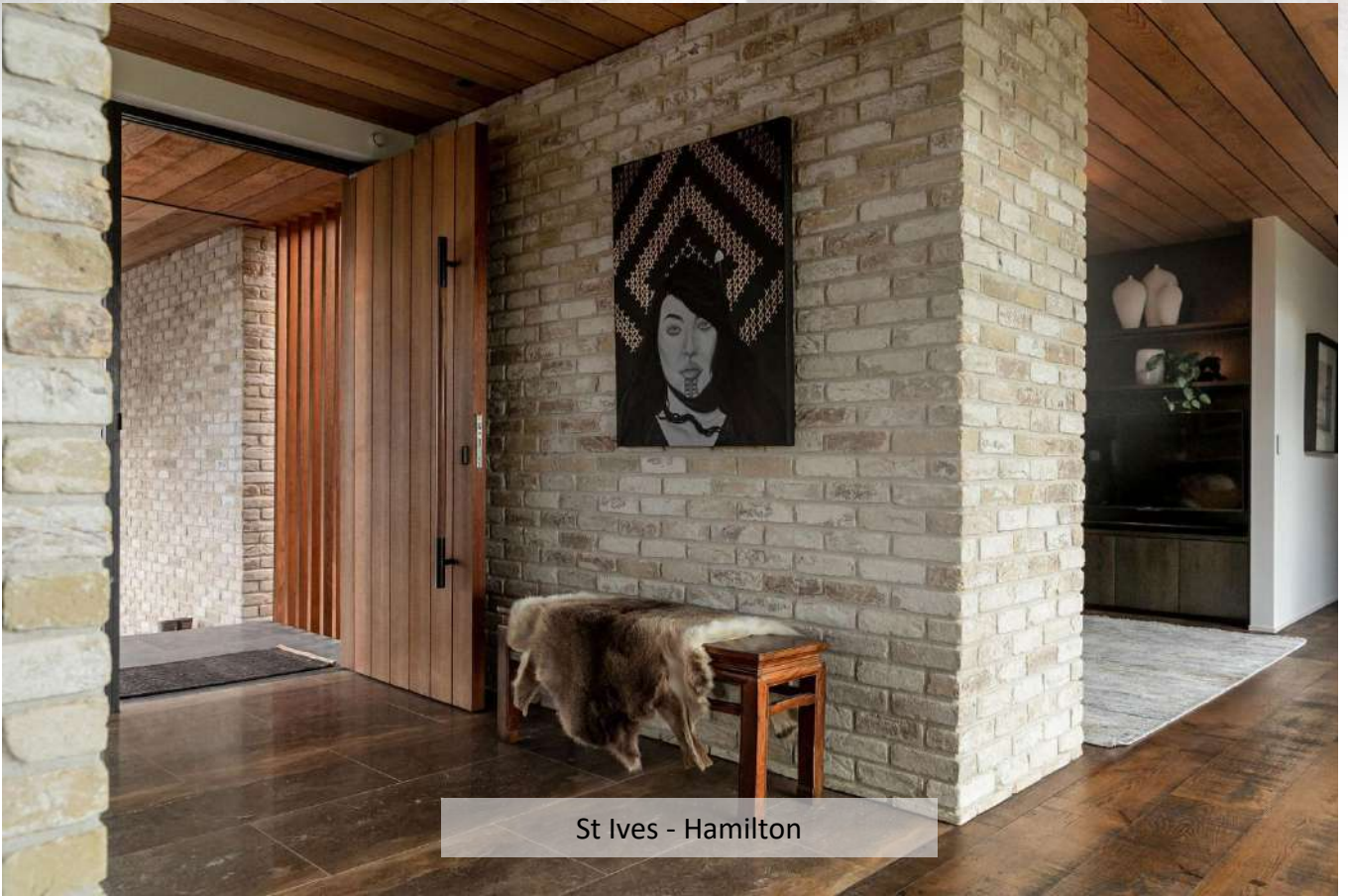




St Ives - Hamilton



St Ives - Hamilton



St Ives - Hamilton



Con Mosso



Marziale



Branco Nuanced



Special Ecrú



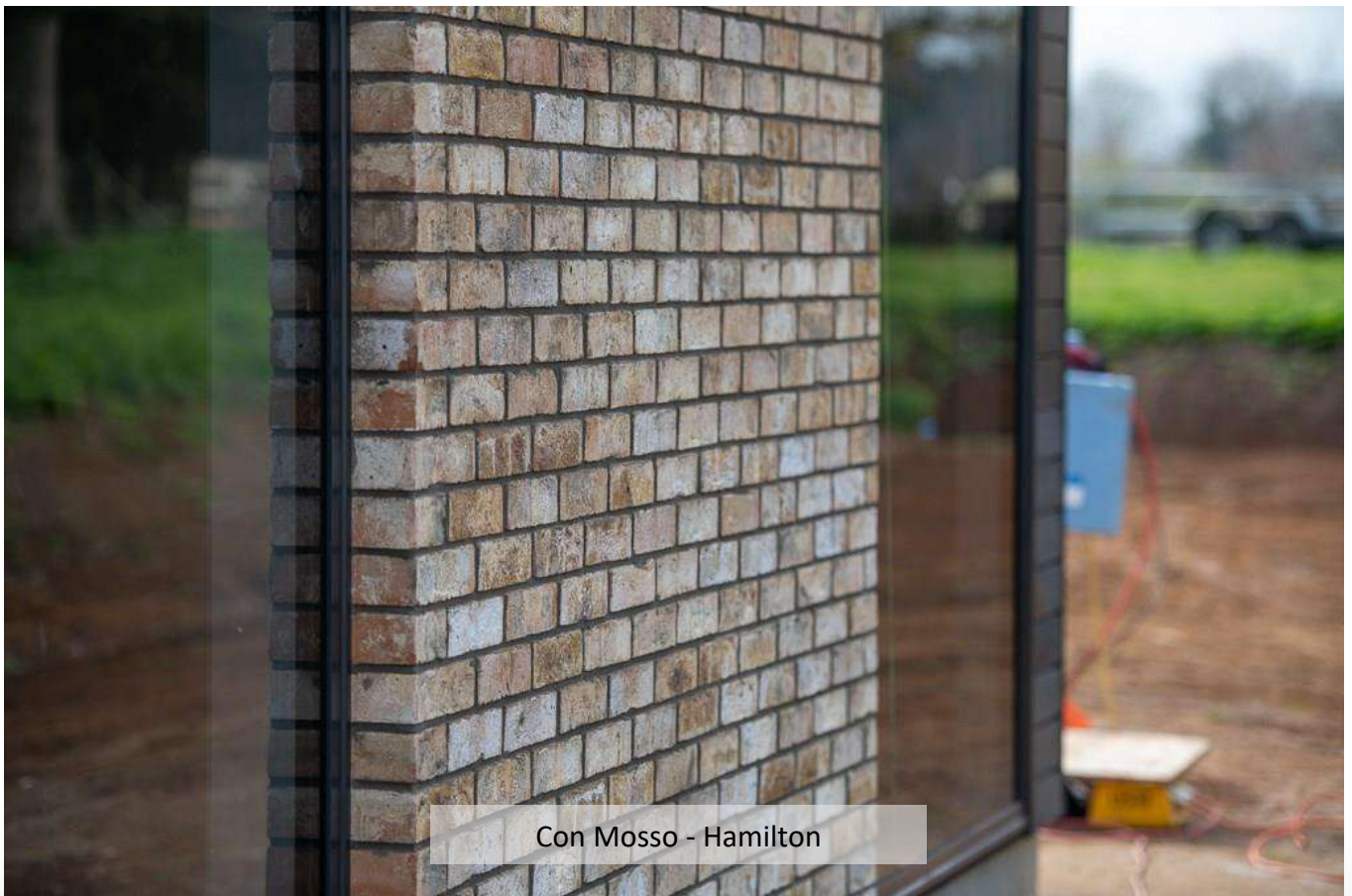
Edelsteen Jaspis



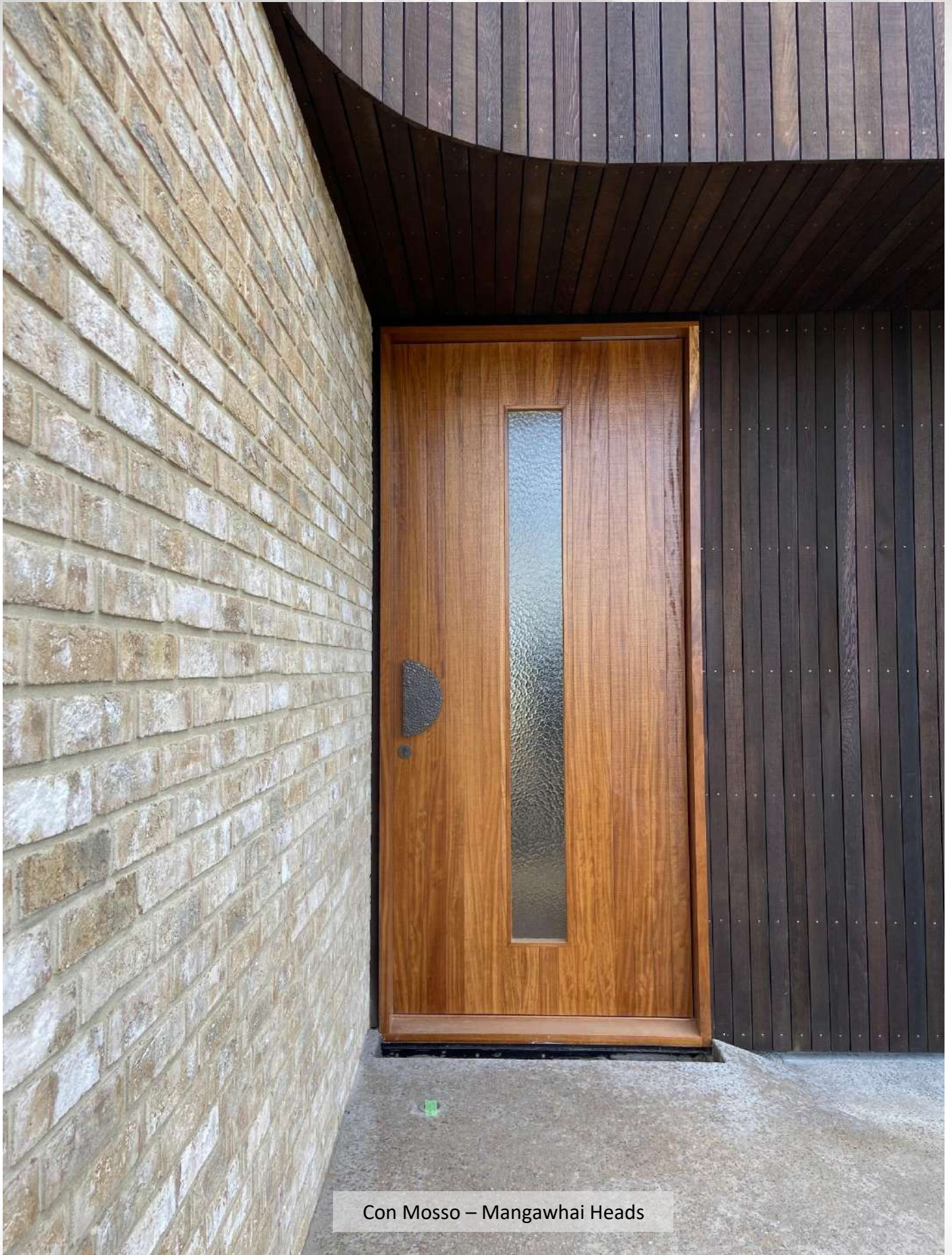
Arces Yellow



Con Mosso - Hamilton



Con Mosso - Hamilton



Con Mosso – Mangawhai Heads



Con Mosso – Mangawhai Heads



Angelsey Weathered Buff



Old Brugs



Byblos Grey



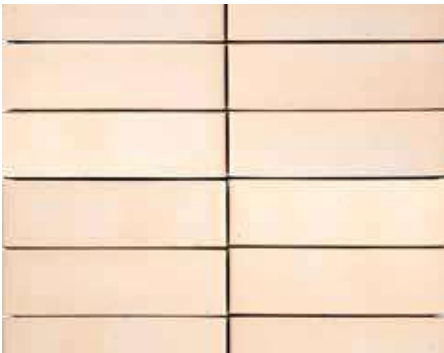
Argos Grey



Lania



Oryx



Rani



Tamiko



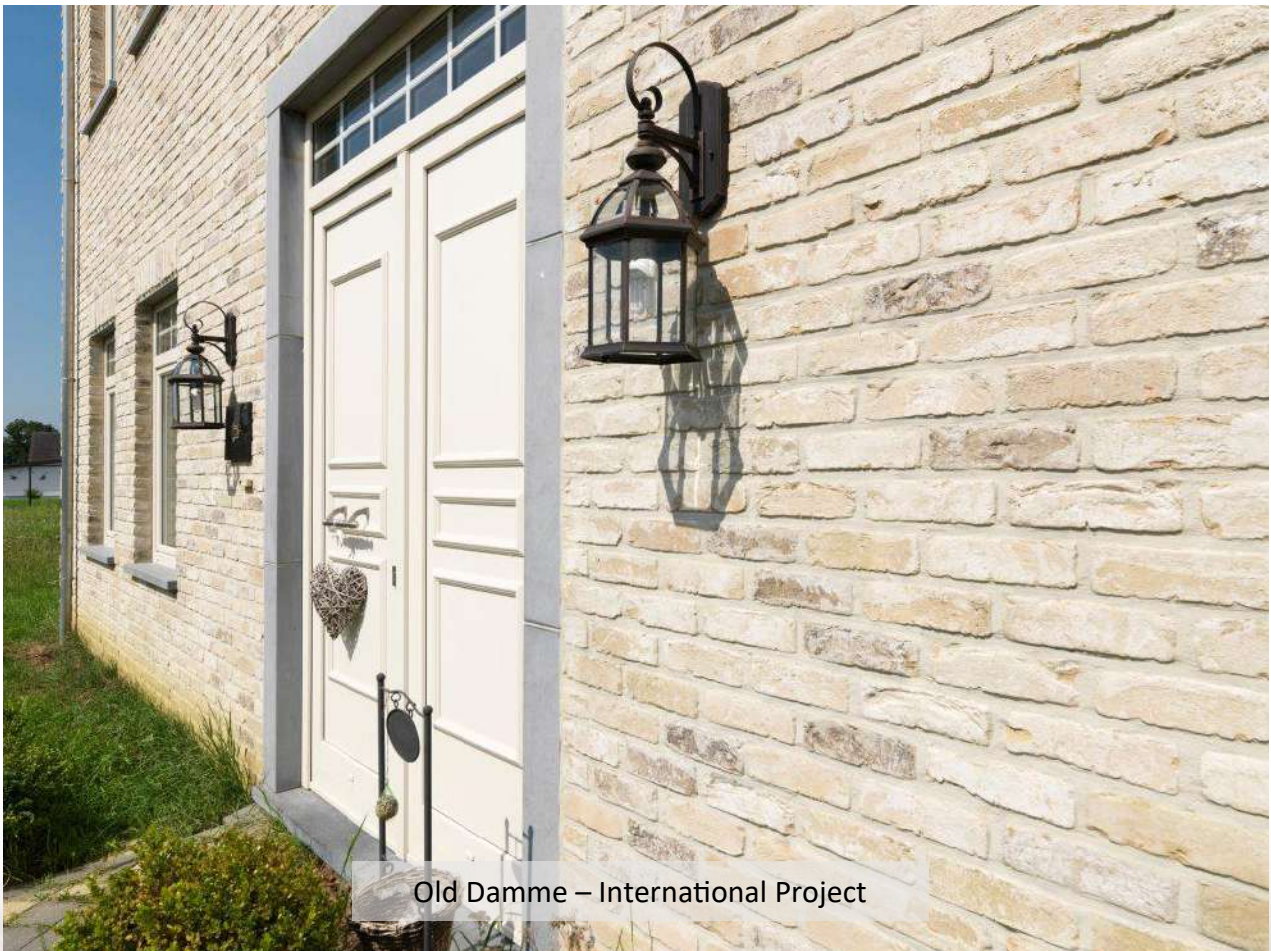
Old Bologne



Old Damme



Old Damme – International Project



Old Damme – International Project

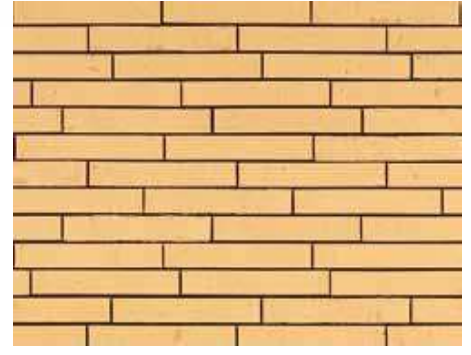
## Yellow Bricks



Orion



Roja



Vegas Yellow



Asuka



Imany



Yellow Brown Nuanced



Yellow Klinker Silversand



Yellow Black Nuanced



Tolus Mint Yellow



Evening Primrose



Callisto



Edelsteen Amber





Latero Zafferano



Eastwood Buff



Olde Alton Yellow



Edelsteen Citrien



Fynsk Gul



Yellow Coal



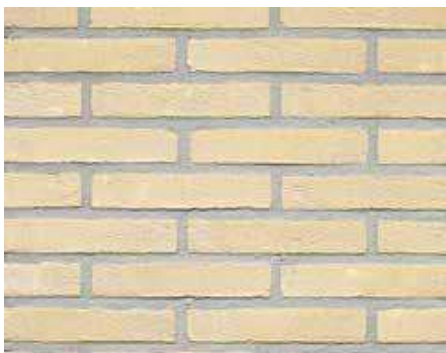
Andante Golden Buff



Magma



Muria Yellow



Yellow Klinker



Yellow Nuanced Silversand



Oakington Buff



Messing



Valeriaan



Orchidee Rose



Aks



Yellow Nuanced Grofsand



Tilis Beige



Tornus Beige



Yellow Natural



Yellow Nuanced



Savanne



Gul Nuanced



Sand



Brons Getrokken



Edinburgh HV



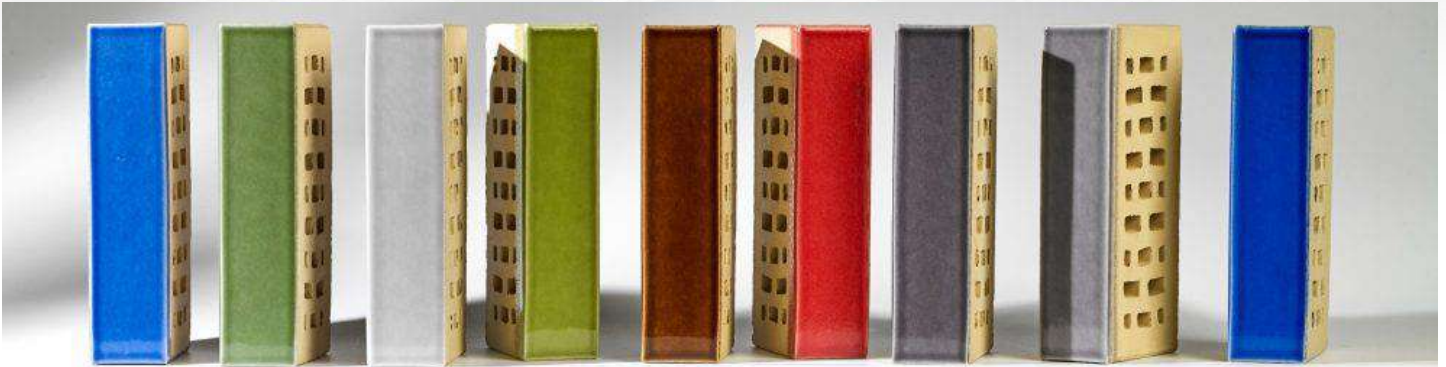
Sawston Buff



Old Ely Cream



Edinburgh VB



## Glazed Bricks

Glazed bricks are very popular for commercial projects exterior use and for special interior application mainly due to the vibrancy of colours and the ease of maintenance.

In addition to the standard range, Wienerberger also offers tailor-made solutions on a project-by-project basis. The possibilities for glazed facing bricks with irregular shapes and sizes are endless. Special colour gradients, metallic glazes, creating images, everything is conceivable and possible. With over 37 colours to choose from – any RAL colour can be selected for your project.





## ECO bricks

ECO-brick: the slim-line look. Eco-brick is NZ's alternative to the classic '70-series' brick, commonly used. The brick depth is 65mm. ECO bricks are a great alternative to the full depth brick where a lighter façade is required. ECO also implies less clay, less firing, and less freight. Many full bricks are also available in this dimension.



## Brick Slips

Most of our bricks can be cut into brick slips. Brick slips provide a perfect alternative and solution for an interior or lighter façade requirement. By direct fix to the substrate, slips are a quick solution as if tiling on the walls.



## ILUZO bricks

ILUZO is a special shaped brick, a recent innovation of Wienerberger. Non-traditional laying means no pointing or time-consuming install. ILUZO gives the impression of being 'mortarless'. As the 10mm mortar sits behind the face of the brick it has a thin-bed mortar appearance. The final look is contemporary, minimalist and sleek.

ILUZO is available in many different colours and has been used extensively across NZ with great success.

CHECK PAGE NUMBERS



Pagus Grey Black Iluzo



[www.brickandco.nz](http://www.brickandco.nz)