

Wienerberger
World of
Façades

Table of contents

1

8 — 33 | Welcome to our World of Façades

10 — 11		Why choose Wienerberger?
12 — 13		Mission Statement
14 — 15		We work according to four pillars
16 — 19		Sustainability at Wienerberger
20 — 25		Why building with clay?
26 — 29		The Wienerberger Brick Award
30 — 31		Tailormade solutions

2

34 — 119 | Your guide to a perfect façade

36 — 37		Types of bricks
38 — 39		Brick sizes
40 — 43		Bonding patterns
44		Mortar colour
45		Masonry with thin joints
49 — 59		Brick slips
60 — 65		Eco-brick
66 — 69		LESS
70 — 73		ClickBrick Pure
74 — 80		Corium
82 — 83		Iluzo
84 — 87		Glazed bricks
88 — 93		Waterstruck bricks
94 — 97		Cassia
98 — 101		Argeton
103 — 118		Danish design

3

120 — 307 | Look. Dream. Choose.

122 — 139		Black
140 — 193		Red-Orange & Multi
194 — 215		Brown
216 — 225		Copper
226 — 257		Grey
258 — 263		Purple
264 — 285		White
286 — 307		Yellow

4

308 — 351 | Clay pavers

5

352 — 356 | Practical Info

Our highlights



CO₂ neutral brick production line
 Another innovative solution to revolutionize the future of the ceramics industry is the new highly efficient zero-fossil-fuel brick slip production at our Kortemark site, in Belgium. A leading factory, where they looked for the perfect combination of durability, quality and aesthetics. **58 – 59**



ClickBrick Pure
 Circular construction is the future. Currently, when demolishing structures, bricks are often recycled as aggregate for road building or the production of concrete. Although bricks are never turned into waste, our ambition is greater than this form of ‘downcycling’. Wienerberger is fully committed to the possibility of reusing facing bricks. This is possible, for example, by using lime mortars for traditional masonry. And now there is also the ultimate circular dry-laying system, ClickBrick! This system makes it easy for facing bricks to be dismantled and used again. **70 – 71**



Tailormade Solutions
 With our tailormade solutions we can make your creative and individual ideas come true. **30 – 31**



Eco-brick, a sustainable solution
 Using Eco-bricks is the best way to let you personalise your home. The wide range of stylish shades of colour makes all kinds of styles and architectures possible. There are timeless colours and contemporary ones. Our 2 new ranges Avolto and Nubilum are only available in the Eco-brick format. Also our Waterstruck and Archipolis collections have been extended in an Eco-brick format. **60 – 61**

- + **New colours in the ranges Recup, Elignia**

- + **Addition of Eco-bricks in the ranges Archipolis, Waterstruck**

- + **New brick ranges: Amfora, Tolus, Avolto and Nubilum**



Corium®
 A unique brick cladding system which consists of clay brick slips, especially designed to clip mechanically into interlocking steel backing sections. **74 – 75**

**“Architecture starts when you
carefully put two bricks together.
There it begins.”**

Ludwig Mies van der Rohe

Welcome to our World of Façades

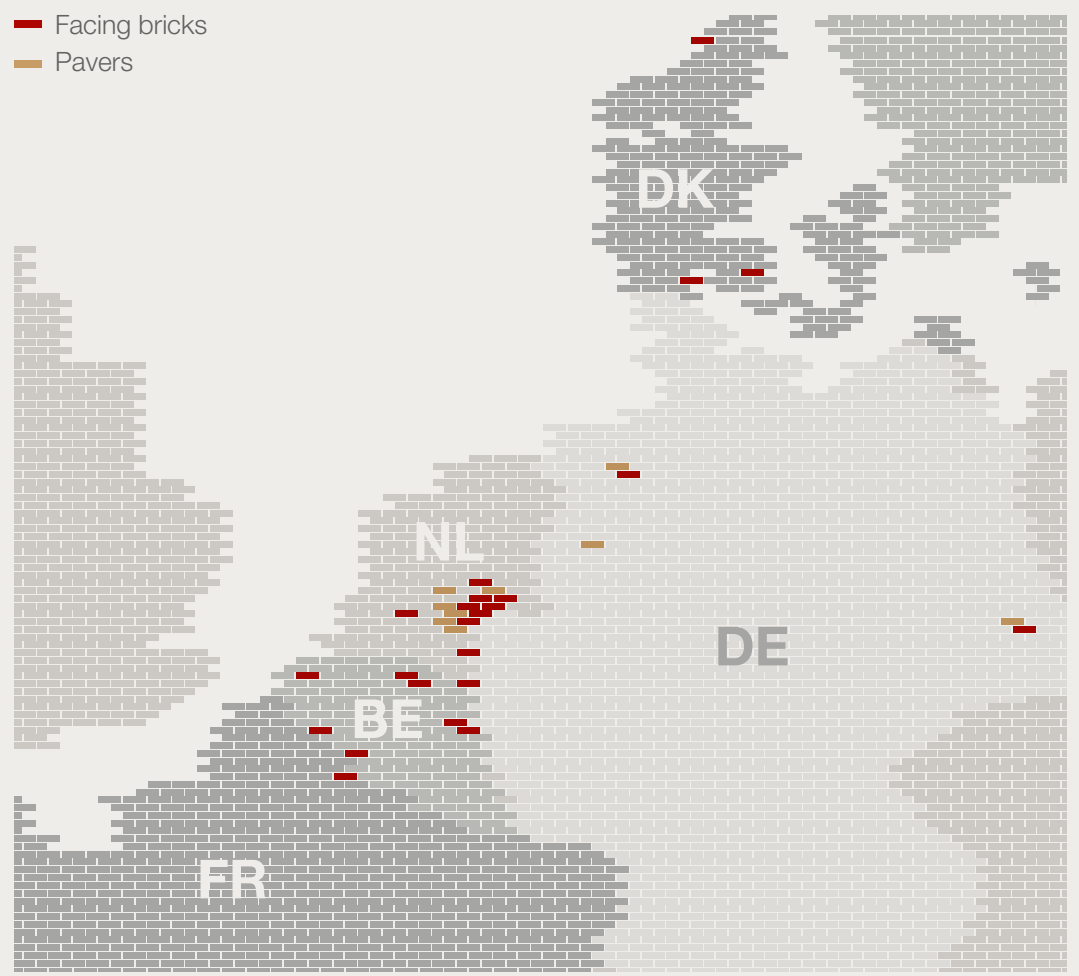


Why choose Wienerberger?

Wienerberger AG is a global provider of building materials and infrastructure solutions located at the Wienerberg in Vienna, Austria, hence the company name. Wienerberger is the only multinational and the world's largest producer of clay blocks for walls, bricks for façades (including façade systems), clay roof tiles and clay pavers with leading market positions. Founded in 1819, Wienerberger can look back on more than 200 years of successful business. Today, we have more than 200 production sites in 27 countries and showrooms in several European countries.

Wienerberger Building Solutions

The production, supply and distribution of building materials made of clay are the core business of the Wienerberger Building Solutions business unit. Concentrating on the international business, Wienerberger World is part of Wienerberger Building Solutions and is located in Kortrijk, Belgium.



European production sites



Mission Statement

We live and invest in true values.


Our vision is to improve the quality of people's lives and create a better world for future generations by providing innovative and sustainable solutions for infrastructure, renovation and new build projects. We strive to be the premier provider of sustainable building materials and infrastructure solutions and the preferred employer in our local markets.

To achieve this vision, we work together based on our four core values: Trust, Respect, Passion and Creativity. Every decision and every contribution we make is guided by these shared values, which ground us, connect us, drive us and bring us to life.

Our goal is to make a meaningful contribution to people and the planet, with solutions that make life easier. We are committed to building a better tomorrow for future generations.


At Wienerberger, we care for tomorrow.






Trust
grounds us.

We value open-mindedness and being supportive of our colleagues. We believe in sharing our opinions thoughtfully and communicating honestly. We act with integrity and reliability, keeping our commitments both internally and externally.



Respect
connects us.

At Wienerberger, we believe in equality within our team. We strive for balance in all relationships, and value life-long learning and the expertise of others.



Creativity
brings us to life.

We are committed to harnessing our ideas and opportunities to create a more sustainable way of life. We are transparent in our dealings and take the time to learn from our successes and our failures. We believe in thinking big and driving innovation in our products, solutions and services.



Passion
drives us.

We are fully committed to Wienerberger and take responsibility for achieving our goals. We are determined to realize our potential and provide premium service and the highest standards, not only today but also in the future. We face challenges with optimism and a positive mindset.

We work according to four pillars

Value

When we say value, we don't mean cost. Throughout the supply chain we demand that our products and services exceed rather than just meet expectations. That way we ensure we offer true value to our shareholders.

Innovation

We're dedicated to finding new ways to be better. That means embracing new technologies, exploring new techniques and investing in new ideas to help our products and services deliver a better quality of life.

Sustainability

Sustainability is not just a commitment towards minimising our impact on the environment; it's a commitment to be better across the board. We take great care with the resources we use and embed our products with industry-leading innovations.

Quality & Expertise

Our global manufacturing heritage spans two centuries. Whether it's an innovative clay block walling system or a traditional handmade roof tile, we apply exacting quality standards to our work.





Sustainability at Wienerberger

WOW – World of Wienerberger – stands for our self-concept to provide solutions that make the world a better place

Sustainability is not just a fad in our 200-year history. It has always been at the core of the world of Wienerberger and constitutes a crucial element of our corporate strategy and our decisions. Our solutions are the key to creating sustainable infrastructure and buildings for generations. We assume responsibility by taking environmental, social and governance (ESG) aspects into account. Our Wienerberger Sustainability program 2023 is founded on three environment-related pillars: decarbonization, biodiversity, and circular economy.



Mobility also plays an important role in the building sector's climate passport. Transport by water offers a number of undeniable advantages.

Decarbonization

Energy efficiency and decarbonization are central issues in all of Wienerberger's business areas. We therefore share the global vision of a CO₂-neutral economy and are determined to contribute to climate protection with our products. In our ceramic production, we will further reduce our greenhouse gas emissions through the technological optimization of our production processes and by increasing the use of green electricity at all Wienerberger production sites. Alongside improvements of existing processes, we are employing new technologies and developing innovative products in R&D projects in order to reach our ambitious targets for 2023 and beyond.

TARGET FOR 2023:
A 15% reduction of our CO₂ emissions compared to 2020.

Biodiversity

Biodiversity is a crucial topic for each of our 216 production sites. At Wienerberger we feel dutybound to respect nature reserves and to use our resources sparingly. By fostering biodiversity, we will further optimize our land use in order to contribute toward an increased presence of flora and fauna. We have therefore set ourselves the ambitious target of integrating all our local activities aimed at protecting biodiversity into a uniform program.

TARGET FOR 2023:
A biodiversity program for all our sites.

Circular economy

One of our ecological targets is to put even greater emphasis on a circular economy. On the one hand, secondary raw materials from internal or external sources are to be reintroduced into the production processes after thorough quality checks. On the other hand, products are to be designed so as to be reusable at the end of their service life. This underlines our strong commitment to resource efficiency and closed value creation cycles. Our target is to ensure that 100% of our new products are recyclable or reusable.

TARGET FOR 2023:
100% of our new products designed to be recyclable or reusable.

Sustainability at Wienerberger

Our Sustainability program 2023 and progress 2022



We are clearly committed to achieving climate neutrality and actively support the European Green Deal. The highest possible level of transparency of our progress in the fight against climate change is important to us. Alongside long-term sustainability targets, we therefore also set ourselves ambitious short- and medium-term targets. However, in order to adequately address all ecological and societal challenges we have defined our Sustainability Program 2023.

	Topics	Targets 2023	Progress 2022
Environment	 Decarbonization	15% less CO ₂ emissions compared with 2020	13.2% less CO ₂ emissions compared with 2020
	 Circular Economy	100% of new products designed to be reusable or recyclable	98% of new products designed to be reusable or recyclable
	 Biodiversity	Biodiversity Action Plans for all our production sites in place	67 production sites with implemented Biodiversity Action Plans
Social	 Diversity	> 15% female employees in senior management > 30% female employees in white-collar positions	15% female employees in senior management 34% female employees in white-collar positions
	 Training and Development	10% more training hours per employee compared with 2020	53% more training hours per employee compared with 2020
	 CSR Projects	200 housing units per year built with our products for people in need in our local markets	254 housing units built
Governance	 Governance Standards	Committed to the highest national and international governance standards	A consistent focus on: <ul style="list-style-type: none"> • Business strategy • Board diversity and compensation • Executive compensation • Succession management

Why building with clay?

Besides being natural, high-quality and maintenance-friendly, ceramics are sustainable in all production stages – from raw material extraction to production and packaging, through to processing.

Clay bricks and roof tiles are among the oldest building materials in the world and are still extremely popular. This does not come as a surprise, because clay building materials are natural, versatile, durable and of stable value. Selecting the right building materials is a decision for a lifetime.

Customers who choose roof tiles, facing bricks, clay blocks or pavers by Wienerberger play it safe – and enjoy more advantages, as compared to other building materials.

1. Versatile

Clay building materials can be used for a variety of applications. They can be used for walls, façades and roofs as well as for gardens, terraces and open spaces. Clay tiles and bricks can be used almost anywhere and for all architectural styles, whether for the construction of single-family houses or apartment blocks, office or public buildings.



Why building with clay?

2. Energy-efficient

Owing to their excellent insulation properties and their heat storage capacity, clay building materials help to reduce the energy consumption of buildings.

3. Durable

Clay building materials are robust, stable and, as a result, especially durable; their lifespan is more than 100 years. Brick buildings, which have lasted for centuries, can be discovered all around the world. Buildings made of clay tiles and bricks are weather-resistant, earthquake-proof and fire-resistant.

4. Aesthetic

Clay bricks and tiles are aesthetic and versatile. Thanks to a wide range of available colours, shapes and surfaces, the number of possible designs and variations is almost unlimited. The colour spectrum ranges from super white to classic red to coal black. Available variants include rough, smooth and glazed surfaces, elongated and wide formats. Roof tiles and facing bricks as well as pavers can be perfectly coordinated with one another.

Why building with clay?

5. Economic

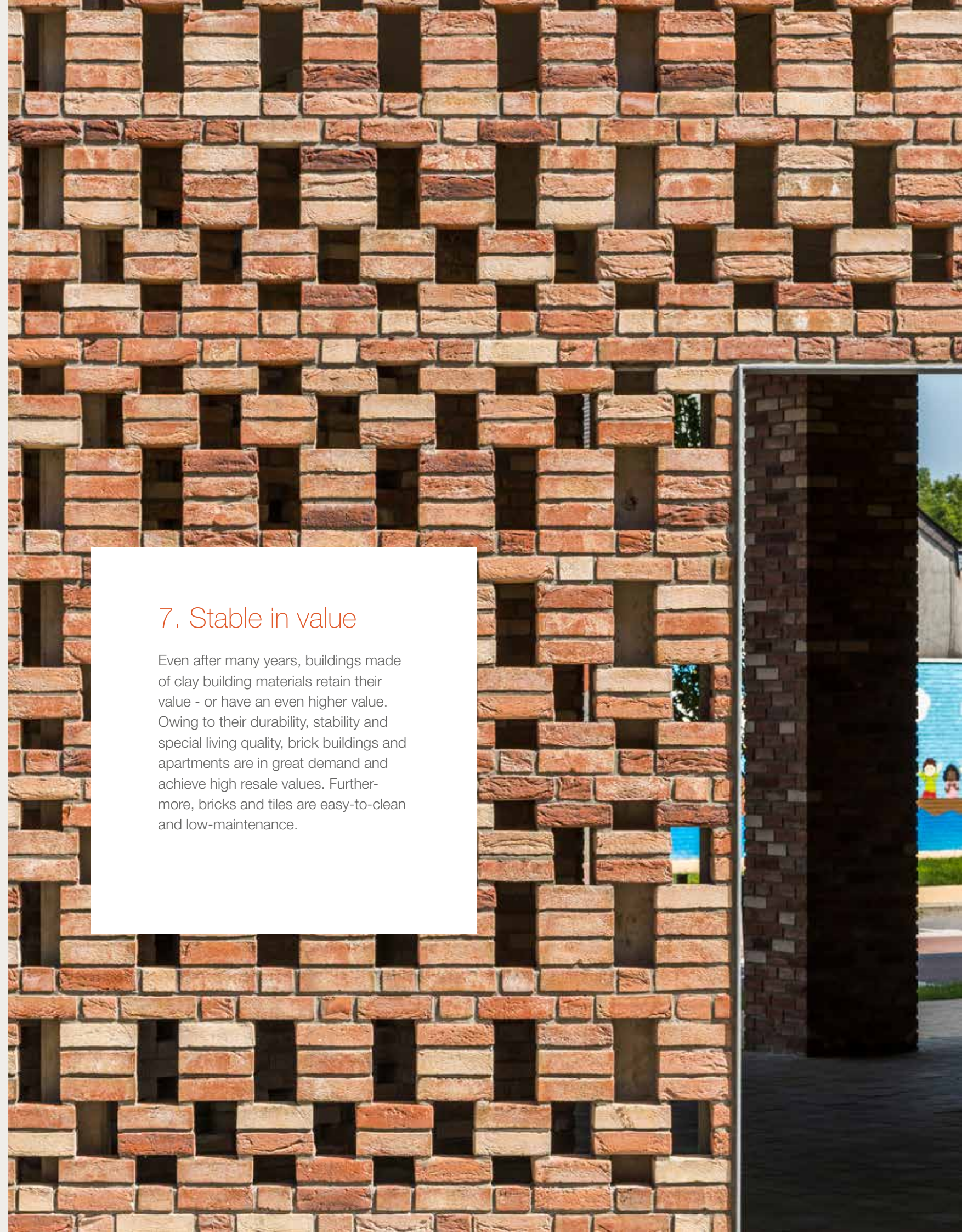
A solid building envelope made of brick can be constructed quickly and flexibly – this saves both time and money. Wind and weather, heat and frost are not able to damage clay building materials. As a result, maintenance and service costs are low. Owing to their favourable insulation properties, clay building materials also help to save energy costs.

6. Natural

Clay blocks, facing bricks and clay roof tiles as well as pavers are particularly sustainable and natural building materials because they consist of the natural raw materials clay and water. Bricks and tiles are absolutely free of pollutants and allergens and, thus, especially compatible with humans and nature.

7. Stable in value

Even after many years, buildings made of clay building materials retain their value - or have an even higher value. Owing to their durability, stability and special living quality, brick buildings and apartments are in great demand and achieve high resale values. Furthermore, bricks and tiles are easy-to-clean and low-maintenance.



The Wienerberger Brick Award

For more than a decade now, Wienerberger AG has been hosting the international Brick Award every two years, providing a stage for excellent brick architecture and its architects.

Wienerberger initiated the Brick Award for the first time in 2004, in order to put this natural building material into the spotlight, demonstrating how exciting, exceptional and modern architecture using brick can be.

Although Wienerberger is the host of the award, it is an independent award and the use of Wienerberger products is no decisive factor for participation. Independent architecture critics, experts and architects are invited to submit innovative and creative buildings and other construction works made of clay building materials. The spectrum of applications ranges from building solutions using classic clay blocks, facing bricks and roof tiles to the creative application of clay pavers and ceramic façade panels.

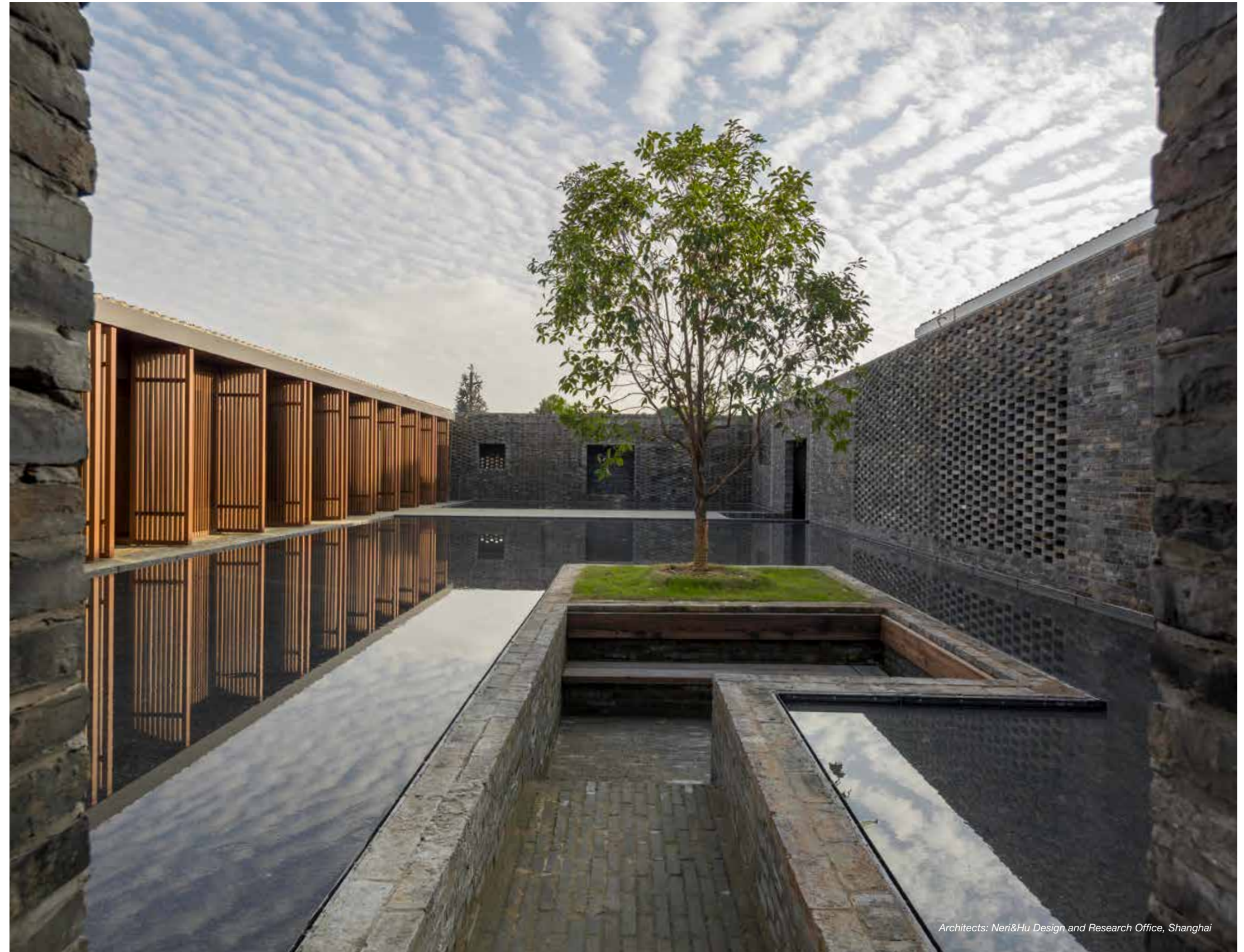
Submission process

Participants are asked to fill out an online template comprising of basic project data, a short informative text describing the project, as well as uploading pictures and plans of the building. By submitting, participants consent to the submission and having this published at a later stage.

Assessment criteria

Assessment criteria include an innovative design and architecture concept, skillful and innovative use of bricks as well as architecture quality in terms of aesthetics, shape and configuration of the project. Special attention is also directed to sustainability, climate resilience, energy efficiency, affordable living – the adequacy of the project in relation to its intended purpose, building type and cultural context.

More information can be found on www.brickaward.com



Architects: Neri&Hu Design and Research Office, Shanghai



Tailormade solutions

Wienerberger offers specialist design and technical expertise, providing effective and helpful advice to achieve successful brickwork.

The services offered range from guidance on the most appropriate product selection for particular projects and applications, to final product specification, including current building standards and codes of practice, special shaped bricks, bond patterns, movement joints and brickwork detailing.



Tailormade solutions, let's make creative and individual ideas come true.

Architects want to realize their own, individual ideas. To get inspired, they want to see and feel products in order to develop their own vision. By offering the possibility to create a Special Customer Request, Wienerberger tries to meet the customer's vision in developing the right product.

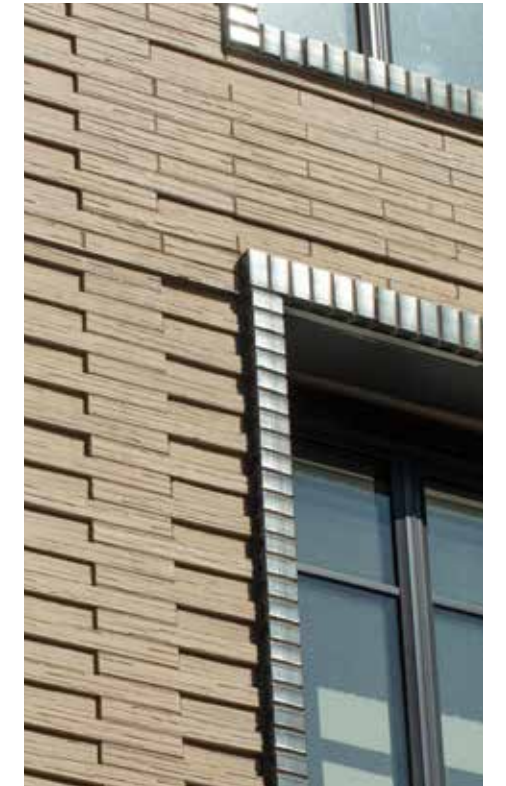
How does the process work?

The product requirements are defined together with the architect; functionality and aesthetics are key. A visit to our production units to start and work on the process together with the team is highly preferable.

For the development of custom-made facing bricks, different parameters like clay mixture, format, structure, engobing and firing method are used. With an agile method on a small scale, a minimum viable product (MVP) is produced to show how the product will look - with as less means as possible. An agile response to the customer's feedback on every MVP is key. For this intense and highly creative process a very close cooperation with the project decision makers (architect, developer, ...) is needed.

During the last years, a lot of sample products are available to inspire interested customers in this process. Developed products may also be a starting point for other projects.

Today, our team of experts has been successfully working on projects in Belgium, the USA, Norway and China.



Greenwich West Building, New York
Architect: Loci Anima, Paris



Your guide to a perfect façade



Types of bricks

Bricks come in a wide range of types, colours and sizes. Choose from a whole assortment of hand-moulded bricks, extruded bricks, pressed bricks, braised bricks, smooth waterstruck bricks, tumbled bricks, grooved bricks and so on.

Hand-moulded bricks

Hand-moulded bricks used to be made by hand, as the name suggests, but today ultramodern machines have taken over the process. But the end result is the same: the bricks look as though they have been made by hand, with uneven and rough sides. The grains and uneven sanding also add to their unique character. And by mixing the types of clay used, there are all sorts of great colour variations you can go for. The result? A great-looking wall, but still with plenty of interest!



Braised bricks

Braised bricks have a touch of individuality: a special 'braising' process gives the bricks a unique shade of grey. The final colour depends on all sorts of factors: the basic colour of the brick, the way they are stacked in the braising kiln and the addition of other substances during the braising process. In any event, at Wienerberger you'll find a lot of contemporary grey bricks to produce a façade you'll fall in love with.



Extruded bricks

The name says it all: the clay is pressed into a long strand and then cut into brick format. The process also allows for larger sizes. And these bricks stand out because of their sleek, linear appearance.



Waterstruck bricks

These are special bricks. The name refers to the process used for removing the bricks from their moulds in which water is used instead of sand. This gives them a smooth, planed and unsanded surface structure. The process also highlights the natural colour of clay more, delivering endless creative possibilities.



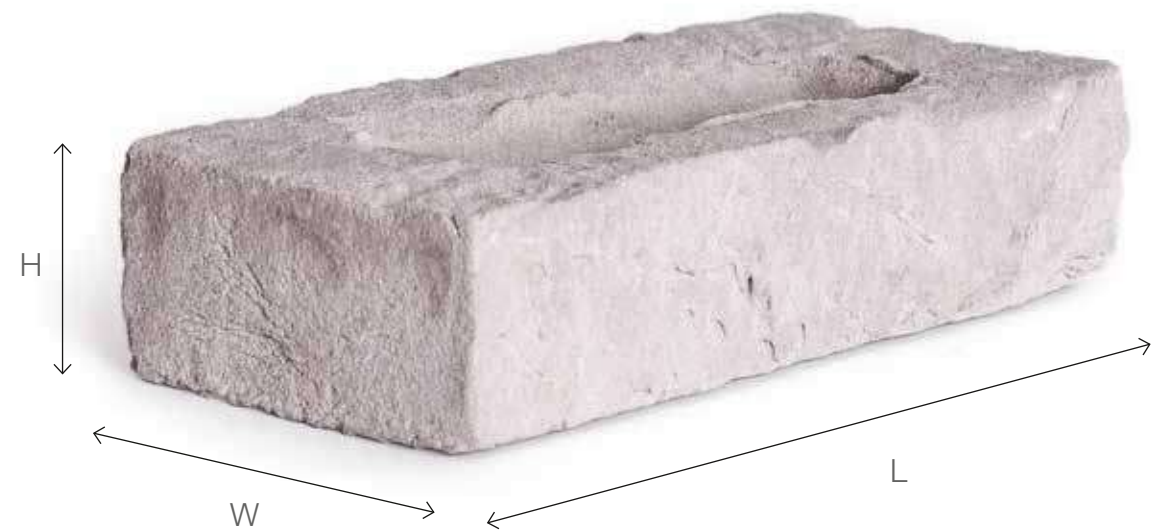
Pressed bricks

With these bricks, the clay is pressed into moulds and then rolled. This gives you a contoured brick with minimal or even no grain, creating a well-defined look.



Brick sizes

Do you want to opt for large bricks that are fast to build with for contemporary-looking façades, or maybe smaller ones that offer a maximum of variety? Whatever the size of brick you choose – big or small, thick or thin – you'll find what you're looking for at Wienerberger.



		length (mm)	width (mm)	height (mm)
Traditional formats				
Module 50	M50	188	88	48
Module 65	M65	188	88	63
Module 90	M90	188	88	88
Waalformat	WF	210	100	50
Waalformat	WF	215	102	50
Waaldikformat	WFD	215	102	65
Vechtformat	VF	210	100	40
Klampformat		185	85	45
220 x 105 x 54	FF	220	105	54
Roman format	RF	238	90	40
Hilversums format	HF	228	108	40
Danish format	DF	228	108	54
178 x 83 x 48	RV	178	83	48
240 x 114 x 71	NF	240	114	71
240 x 115 x 71	NF	240	115	71
288 x 90 x 48		288	90	48
Schouterden format		256	90	43
Long formats				
400 x 95 x 48		400	95	48
400 x 100 x 40		400	100	40
495 x 100 x 38		495	100	38
500 x 100 x 38		500	100	38
510 x 100 x 40		510	100	40
535 x 105 x 40		535	105	40
Eco-brick formats				
Eco-brick	WF	210	65	50
Eco-brick	WF	215	65	50
Eco-brick	WFD	215	65	65
Eco-brick 240		240	65	40
Eco-brick 400		400	65	40

Bonding patterns

Achieving different looks

Bonding refers to the way in which the bricks are laid. The primary purpose of bonding is to ensure the brickwork is strong and stable. However, it can also have a dramatic effect on the visual appearance. Today's architect has a huge selection of masonry bond patterns to choose from. To point you in the right direction, here's a summary of the most commonly used bond patterns below.

Stack bond



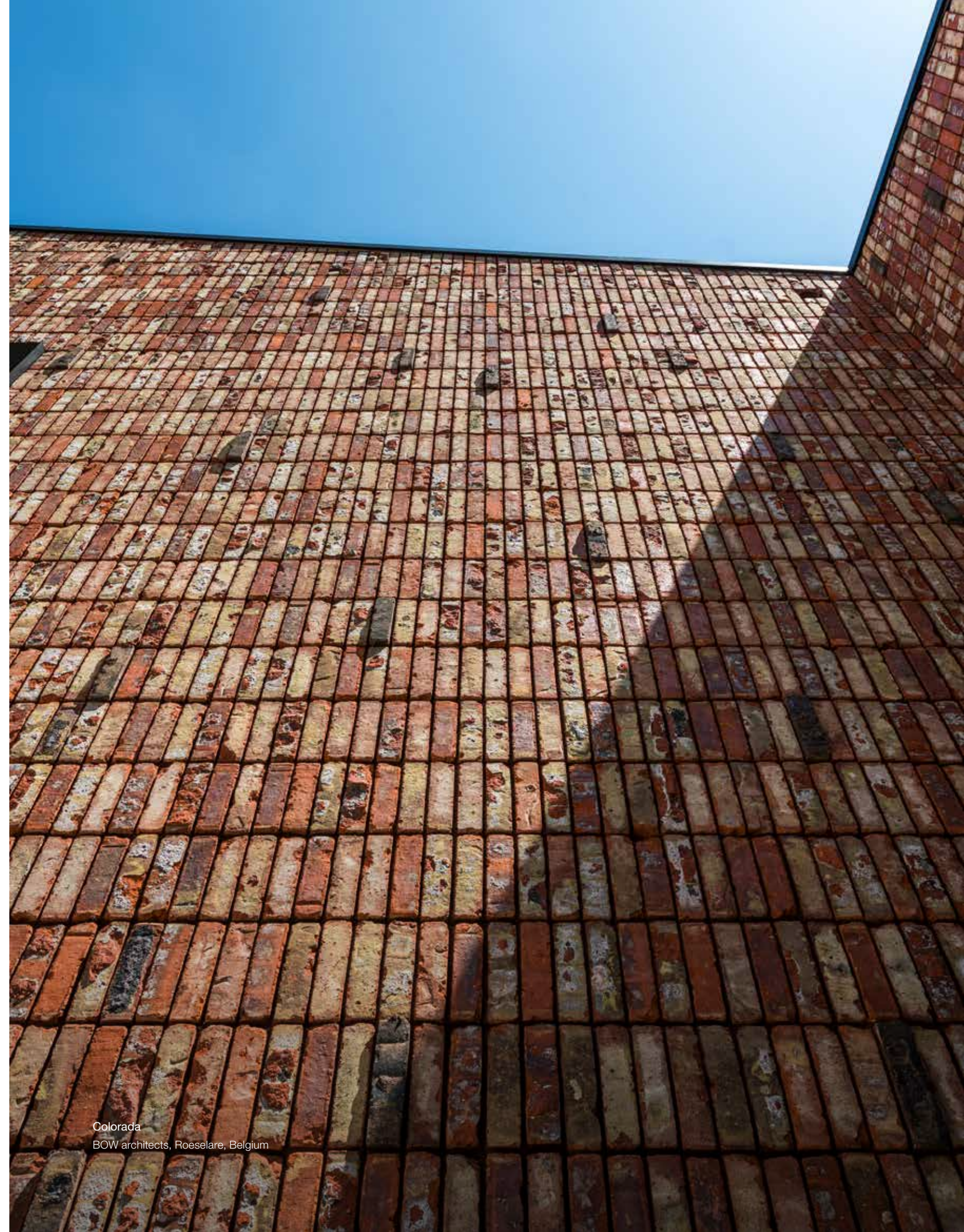
Three quarter bond



Brazilian bond

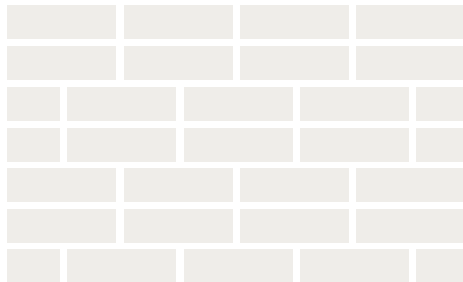


The claustra or Brazilian bond is a bond that is characterised by many openings in the masonry. These openings result from the fact that the facing bricks are supported only at the ends by the underlying facing bricks. The openings that are thus created give the masonry a transparent character. Point of attention when using the Brazilian bond: the overlay between the bricks must at least be three quarters of a brick.

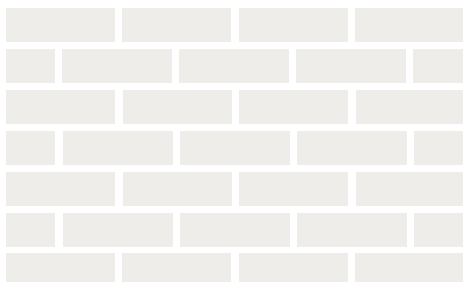




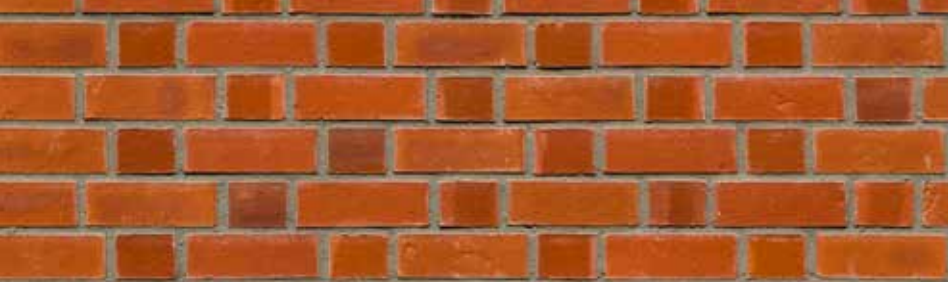
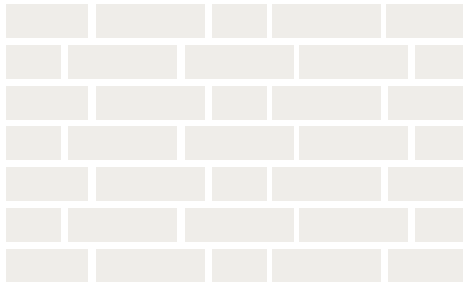
Block Bond



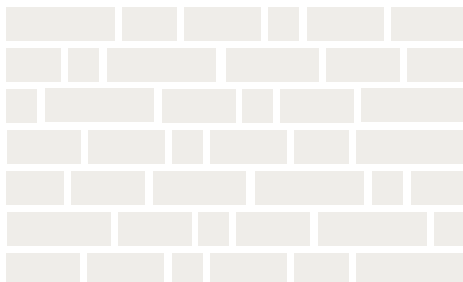
Stretcher bond



English bond



Wild bond



Mortar colour

Another key consideration for determining the overall appearance of your building is the colour of mortar you use. Mortar actually accounts for 15 - 17% of the visible brickwork (dependant on bond pattern) and the colour chosen can change the look of your wall considerably.

Facing bricks show your personal style, but don't underestimate the effect of the mortar joints used to lay them. If you want coloured mortar, you'll need to match it with the colour of your brick. Light joints produce a light wall, whereas dark joints do the opposite. If you go for a mortar joint that's the same colour as the brick itself (tone-on-tone), your wall will have a nice even appearance. Or maybe you'd rather have no joints at all? In that case, using adhesive or thin bricks can be a good alternative: that way, the bricks are laid close together, creating an expressive wall.

Below are some examples of how different mortar colours can significantly change the look of the same brick.

Medium mortar



Same joint colour



Glued bricks



Masonry with thin joints

Thin joints are hotter than ever. Thin joints give your wall a lovely solid look, bringing your façade into its own. You have 3 options to choose from:



Adhesive



If you opt for adhesive, a thin layer of mortar is used between the bricks. The specific composition of the bonding mortar ensures the perfect bonding strength. This makes the joint virtually invisible, which in turn highlights the look of the brick itself. In fact it looks as though the bricks have simply been stacked on top of each other.



Thin brickwork



With thin brickwork, a special mortar is used that enables thinner joints to be created. This mortar is applied using a smaller trowel. The result is the same as with using adhesive: a solid, expressive wall in which the bricks play the starring role.



Iluzo: the look of adhesive-bonded



As a result of the growing success of thin joints, Wienerberger has developed a smart brick: Iluzo. This brick combines the benefits of classic mortar brickwork with the benefits of thin masonry.

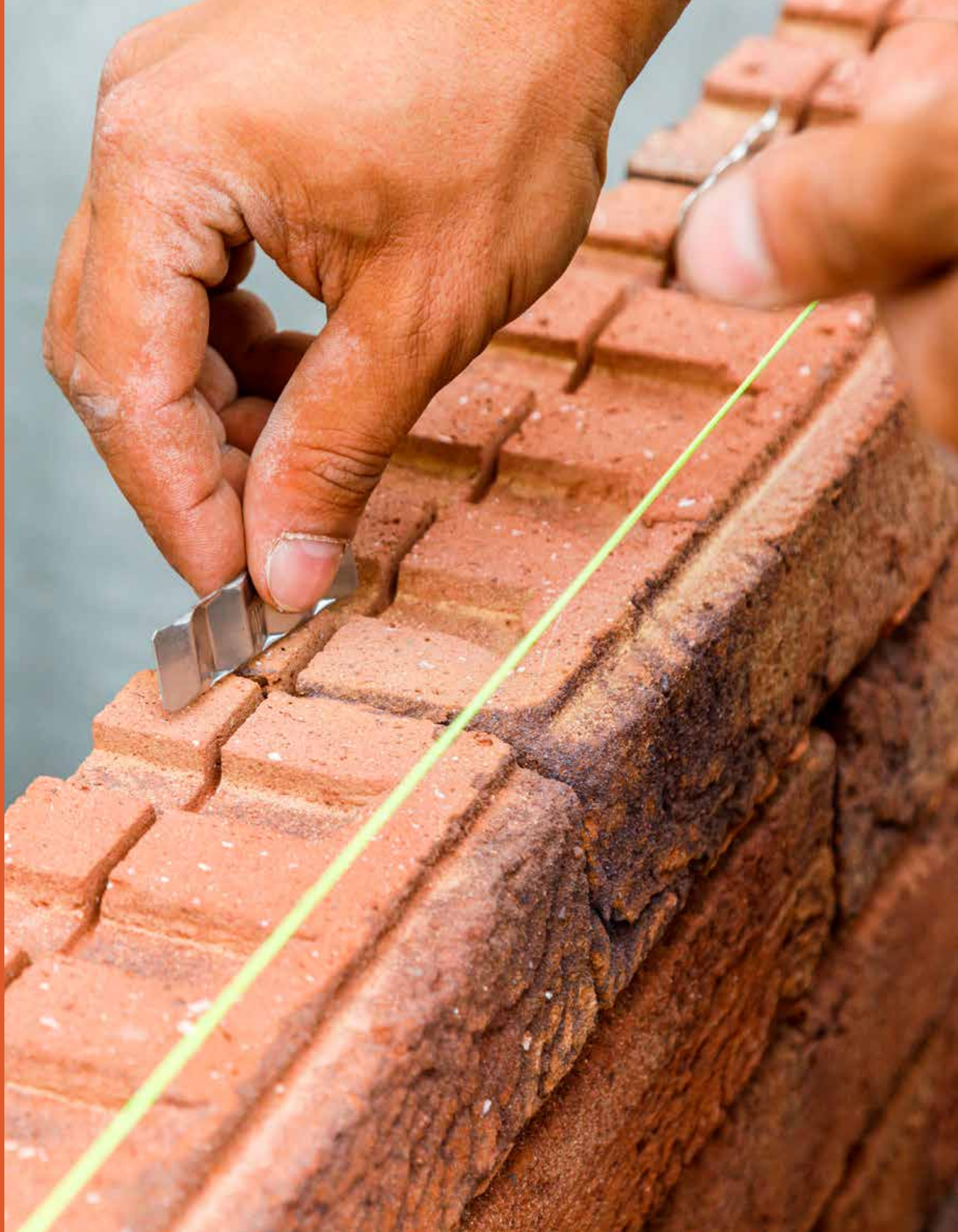
The Iluzo has a thin joint at the front and then a hollow that still enables a 12 mm layer of mortar to be applied. The Iluzo makes brickwork with thin joints even easier than before. Is Iluzo an illusion? No way! But you're sure to get a multi-coloured and innovative façade.

All of our facing bricks are suitable for traditional masonry, as well as for brickwork with adhesive and thin mortar joints.



Our highlights

- Brick slips
- Eco-brick
- LESS
- ClickBrick Pure
- Corium



Brick slips, aesthetics combined with energy savings

Our bricks slips open up a world of new renovation and new build options for you. They provide additional alternatives in terms of insulation thickness and appearance and colour of each façade. You can apply brick slips both inside and outside, as long as the substrate is dry, stable, flat and dust- and grease-free. Brick slips give the interior a surprising touch, create exciting colour and light effects and provide you with endless combination options. Brick slips have the same qualities as common facing bricks. In other words, they are dimensionally stable, non-combustible, robust, easy to maintain and frost-resistant. Thanks to their minimal thickness, they look perfectly at home against a ceiling or overhang.



Ideal for façade renovation

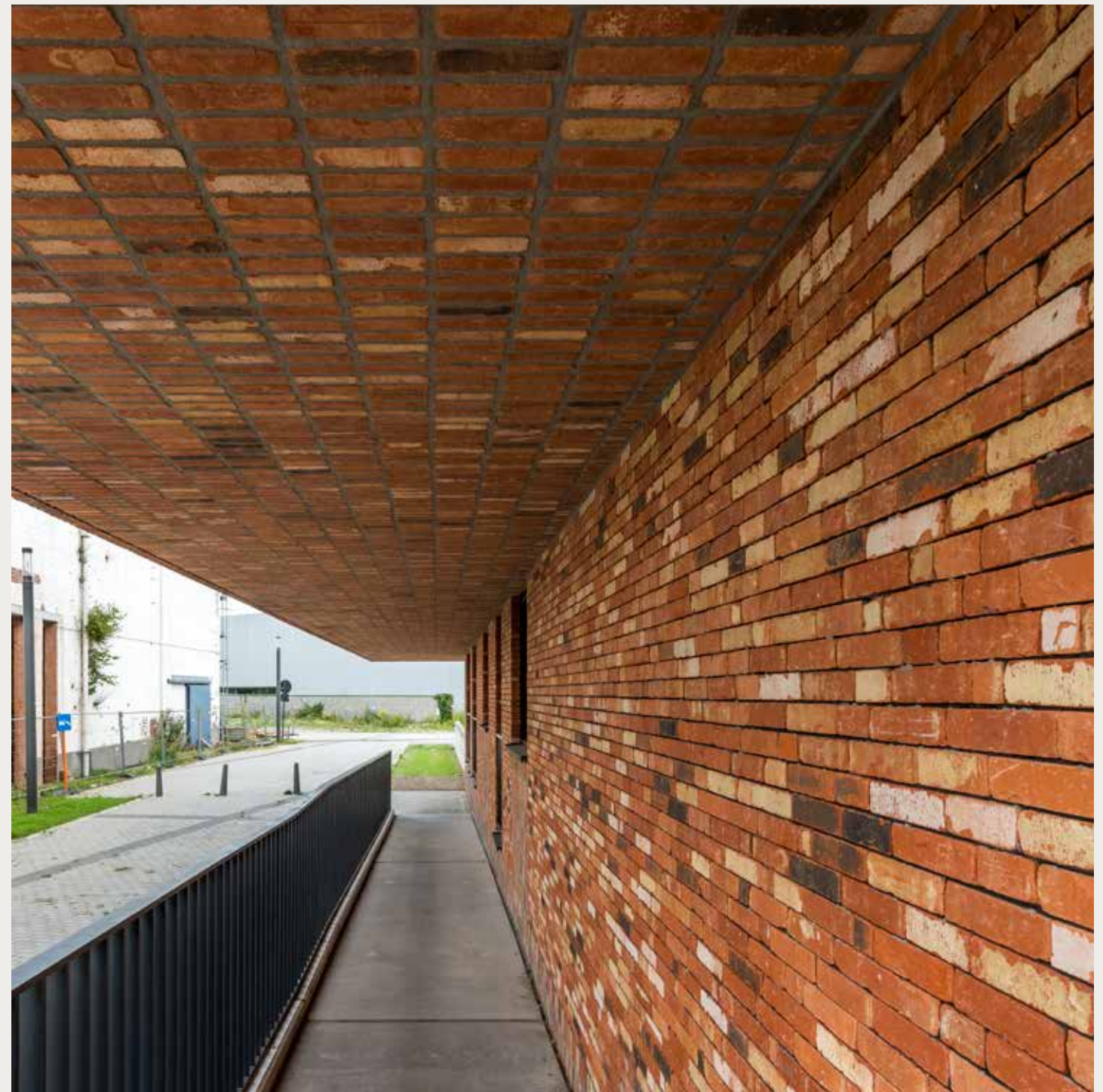
Brick slips are the ideal solution for maximizing the space saved during façade renovation. Where the width of a traditional brick is not available, these brick slips – with a thickness of 9 mm to 22 mm – are a very practical solution. Their slim profile also means that brick slips offer numerous options for insulation thickness, yielding lots of possibilities for energy savings.



Our on-line pressed brick slips are available with a thickness starting from 9mm.

Perfect for new build houses and high-rises

Once the brick slips are in place, they are almost indistinguishable from whole bricks. Virtually all facing bricks in our product range are also available as brick slips with the same qualities and properties as their 'big brothers'.



Hectic Braised
Architect ir. arch. Patric Billiet, Oud-Heverlee, Belgium

Bricks in an interior setting: a captivating effect

By integrating bricks into interiors, you create a surprising touch, exciting colour and light effects, and have endless possibilities in terms of combinations and creativity.

Brick slips offer a flexible way to get the style you want and can be fitted to a range of surfaces as a quick, easy and cost-effective way to create an authentic brick finish that offers low maintenance and long-term durability.

The performance benefits of brick slips are similar to those of brick – a breathable, non-combustible, durable, recyclable and energy-efficient material. No other cladding solution offers this combination of beauty and practicality.

Brick slips are the ideal solution for creating memorable and impactful interiors for retail, hospitality and commercial spaces. We know that, when designing or refreshing a boutique, restaurant, hotel or office interior, time and space are incredibly valuable. Brick slips allow you to construct an authentic-looking brick wall with speed, using up minimal floor space and creating little mess.



Hoorbloem
Architect Slegghem & Partners, Zwevegem, Belgium

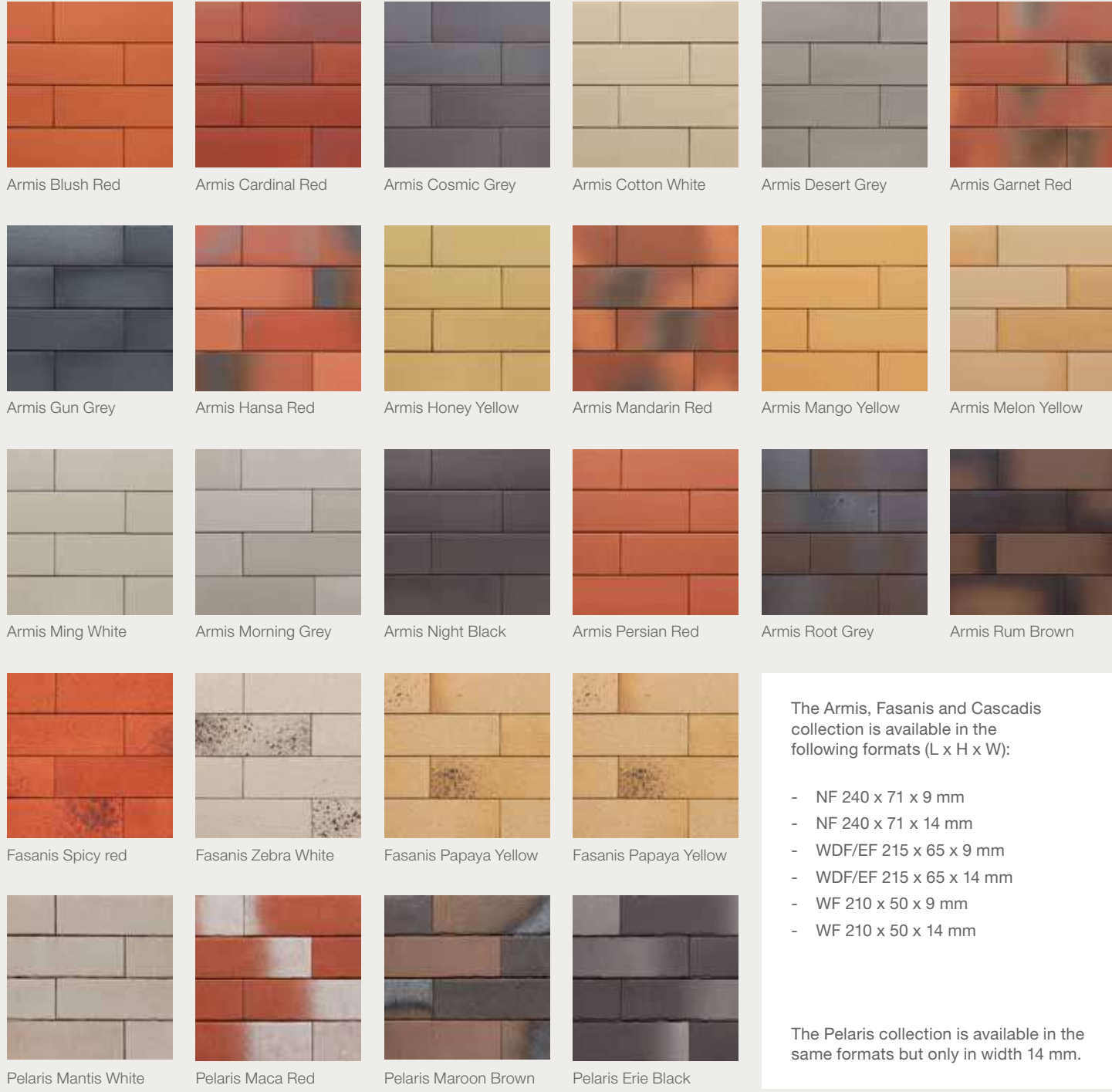


Project: KANSO, Vilnius
Mix of Pagus Grey, Pagus Grey-Black and Pagus Brown-Black
Architects: Avidas Songaila, Simonas Baublys / UAB Renova

Ammonit and Brick Slips Kortemark

Nearly all our facing bricks are available in brick slip. In addition to our standard range we have added 2 additional brick slips ranges: Ammonit and Brick Slips Kortemark.

Ammonit



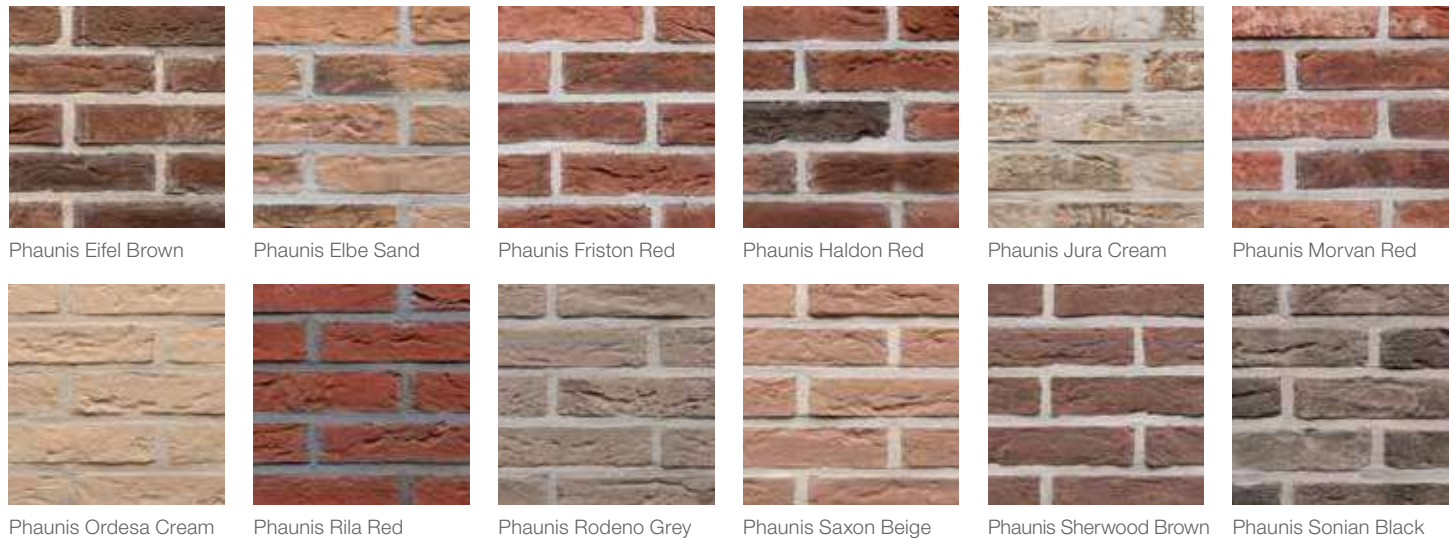
The Armis, Fasanis and Cascadis collection is available in the following formats (L x H x W):

- NF 240 x 71 x 9 mm
- NF 240 x 71 x 14 mm
- WDF/EF 215 x 65 x 9 mm
- WDF/EF 215 x 65 x 14 mm
- WF 210 x 50 x 9 mm
- WF 210 x 50 x 14 mm

The Pelaris collection is available in the same formats but only in width 14 mm.



Brick Slips Kortemark (CO₂ neutral brick slips)



The Brick Slips Kortemark production line is unique. Traditionally brick slips are cut from bricks. The brick is cut into three pieces and the middle part is thrown away. The two outer pieces are the slips. In the new system the brick slip is immediately compressed, which avoids the need for cutting energy. In addition, since there is no middle piece, no waste is produced and there is no need to transport the base slips. It's a lot easier in many ways.

New techniques for the CO₂ neutral production of brick slips have been used in various areas: to create new designs and raise the quality, to reduce material consumption, introduce closed cycles, shorten transport distances in the building industry, and, at the same time, reduce CO₂ emissions. This is also reflected in the properties of the final product. The result is very dimensionally stable hand-moulded slips and slip corners. The tolerances are extremely tight, in terms of length, height and especially flatness.



The Brick Slips Kortemark range is available in WF and in WDF.

100% green electricity

The energy concept of the Kortemark site is also remarkable within the sector. The kiln is fully electrically fired with green energy, 25% of which they generate themselves through their solar panels, supplemented by 100% renewable electricity. The drying plant uses the residual heat from the oven, which ensures that there is no need for fossil fuels.

Improved quality & dimensional stability

Brick slips are already used in new buildings and in renovations and Wienerberger set the goal to improve the quality even further. Due to the link with modular and circular construction, it is highly likely that the prefab sector in the construction industry is going to grow. With this dimensionally stable solution, a product that meets the quality requirements of the prefab sector can now be offered. The fact that they do not have to rectify, calibrate or cut afterwards makes the new brick slips easy to use in additional sectors, which could open new paths.



Digitally engobed bricks

In this production line, digital engobing is used for the first time. An engobe is a clay emulsion that is responsible for the colour of the product and is applied to the surface of a brick slip. The team at the production site does this with a printer, which allows them to print on pixel level, which creates stunning products. What is also different in the production is that the colour is applied before firing and therefore also fired in, which ensures an excellent quality. Traditionally, the transitions were made by colouring the bulk, but now there is a better way to do it!

Sustainable packaging

Additionally, regarding packaging, the team has opted for a sustainable solution as well. The online design and especially the dimensional stability ensure that there is no need to calibrate or cut or rectify anything at the end of the process. The new production process allows the brick slips to be bundled per 20 only with straps and then stacked on a return pallet and protected with a circular sleeve.

Eco-brick, the narrow ecological facing brick

An Eco-brick is less wide, so you can add up to 3.5 cm more insulation and that is great for your energy bills.

Eco-brick is a genuinely contemporary wall façade brick. The bricks are less wide, allowing you to add up to 3.5 cm more insulation and substantially save on your energy bills. The reduced thickness can also leave you more living space on the inside. And your housing is guaranteed to have more appeal, because Eco-brick is available in numerous, timeless colours - including a number of entirely new shades.



Metropolis Aula Red Eco-brick

Architect Bureau DGB, Kortrijk, Belgium

6 powerful arguments that make a real difference:

1 | Slim line



2 | Ideal for new construction and for renovation



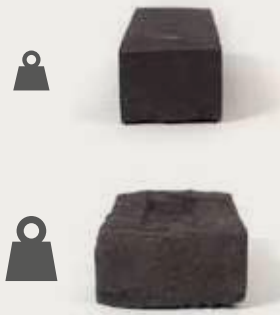
3 | More insulation



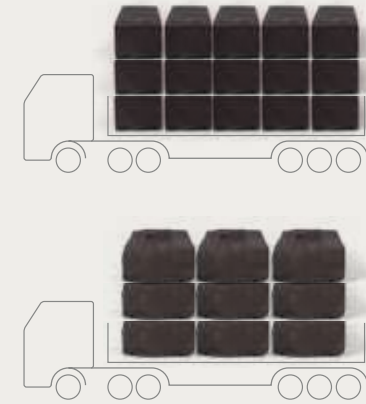
4 | More living space

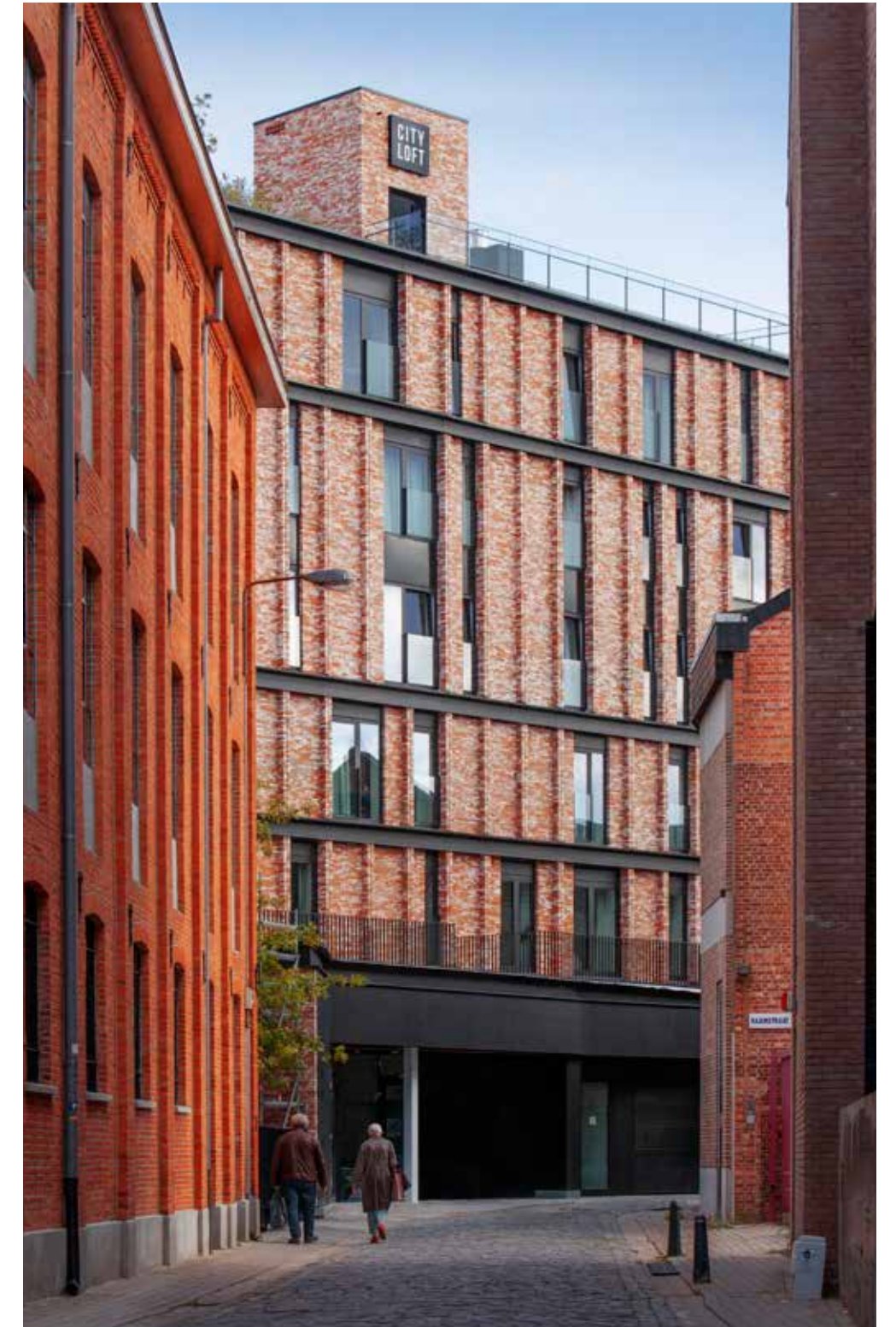


5 | Being lighter makes them easier to handle for traditional building



6 | Less fuel for transport





Metropolis Atrium Red Eco-brick

© Philippe Van Gelooven



Archipolis Onyx Black Eco and Cadet Black Eco-brick

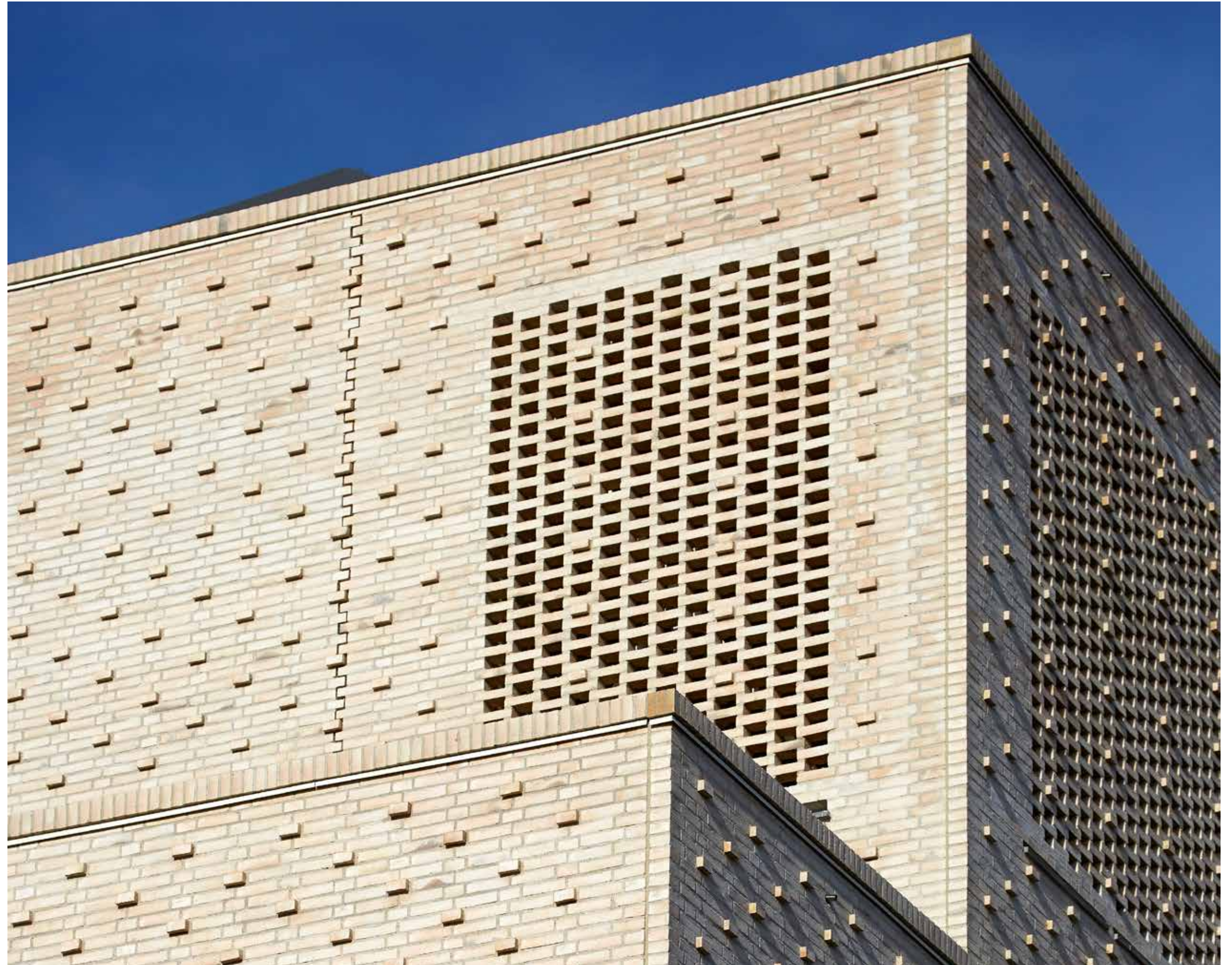
Engelshove Architekten



LESS is more

As an alternative solution for durability, Egernsund Wienerberger has developed a new brick with 3 small holes. LESS has exactly the same dimensions and appearance as a traditional Danish soft brick. The only difference is that LESS reduces both the carbon footprint and raw material consumption by double-digit percentages.

LESS is another step in Wienerberger's roadmap for 100% CO₂-neutral production



Avignon Coal



ClickBrick Pure, a breakthrough in circular construction

Wienerberger completes the circle

To reduce raw material consumption, CO₂ emissions, the environmental impact and waste production, the construction sector is focusing on circular economy. Wienerberger is not lagging in this endeavour; on the contrary.

ClickBrick Pure

Circular construction is the future. Currently, when demolishing structures, bricks are often recycled as aggregate for road building or the production of concrete. Although bricks are never turned into waste, our ambition is greater than this form of 'downcycling'. Wienerberger is fully committed to the possibility of reusing facing bricks. This is possible, for example, by using lime mortars for traditional masonry. And now there is also the ultimate circular dry-laying system, ClickBrick! This system makes it easy for facing bricks to be dismantled and used again.



The ClickBrick system

ClickBrick is a dry-laying system consisting of flat-cut facing bricks that are put together by means of stainless steel clips and are connected to the substructure via cavity anchors. ClickBrick Pure are hand-moulded bricks with standard dimensions and a false joint (8 mm).

Low environmental impact

- ClickBrick is 100% circular
- All system components are fully reusable
- Long lifespan
- All elements can be detached without damaging the rest of the building
- Only 2 types of material needed (steel and ceramic) - simple high-quality recycling at the end of their service life



Building with ClickBrick

Reliable

ClickBrick Pure has been around for a long time. It is used in other countries on a regular basis and has sufficiently proven its technical robustness and reliability.

Shorter Construction Time

The system is dry and simple. There is not much cutting needed. And that also means less waste on site. Due to the dry building process, construction of the façade is quick and easy. No (adhesive) mortar has to be prepared and no containers or concrete mixers have to be cleaned afterwards. No pointing needed! In addition, the building site and scaffolding stay clean. The site has never looked so tidy.

Less Weather Dependent

ClickBrick is a labour-friendly construction method, with its installation unaffected by weather conditions, making it much easier to schedule the construction phase.

Project Support

Wienerberger's consultants provide excellent support at the beginning of the project, on the start-up of the site and also during the construction phase. They are well aware of how to handle invisible expansion joints, window connections and corner solutions.





Corium®, a unique brick slip cladding system

What is Corium®?

Corium® is a unique brick slip cladding system that combines the natural beauty of genuine brick with cost-effective fast-track installation. The Corium® system consists of clay brick slips, specially designed to clip mechanically into interlocking steel backing sections. These profiled sections are mounted horizontally, vertically or diagonally and are suitable for use on steel framed substrate walls, concrete, masonry and timber frame of both new and existing buildings. The mechanical 'clipping' feature is Corium's® unique feature and ensures a high strength façade. An innovative and versatile solution, Corium® brings exciting brick colour and texture combinations to the construction industry. Fully industry tested and approved, you can be assured of a strong, quality finish to your building project that will last many years.

The benefits of using Corium®

Corium® façades offer authentic brick aesthetics with an unrivalled choice of shapes, colours, textures, sizes, and even premade corners, that can be installed on a wide range of substructures for complete versatility. Corium® brick cladding allows for experimentation with bond patterns, brick orientation, vertical and horizontal installation for the creation of more complicated façade design features such as curved surfaces and soffits.



Lobby, Vibe Hotel, Darling Harbour, Sydney, Australia



Benefits of the Corium® system include:

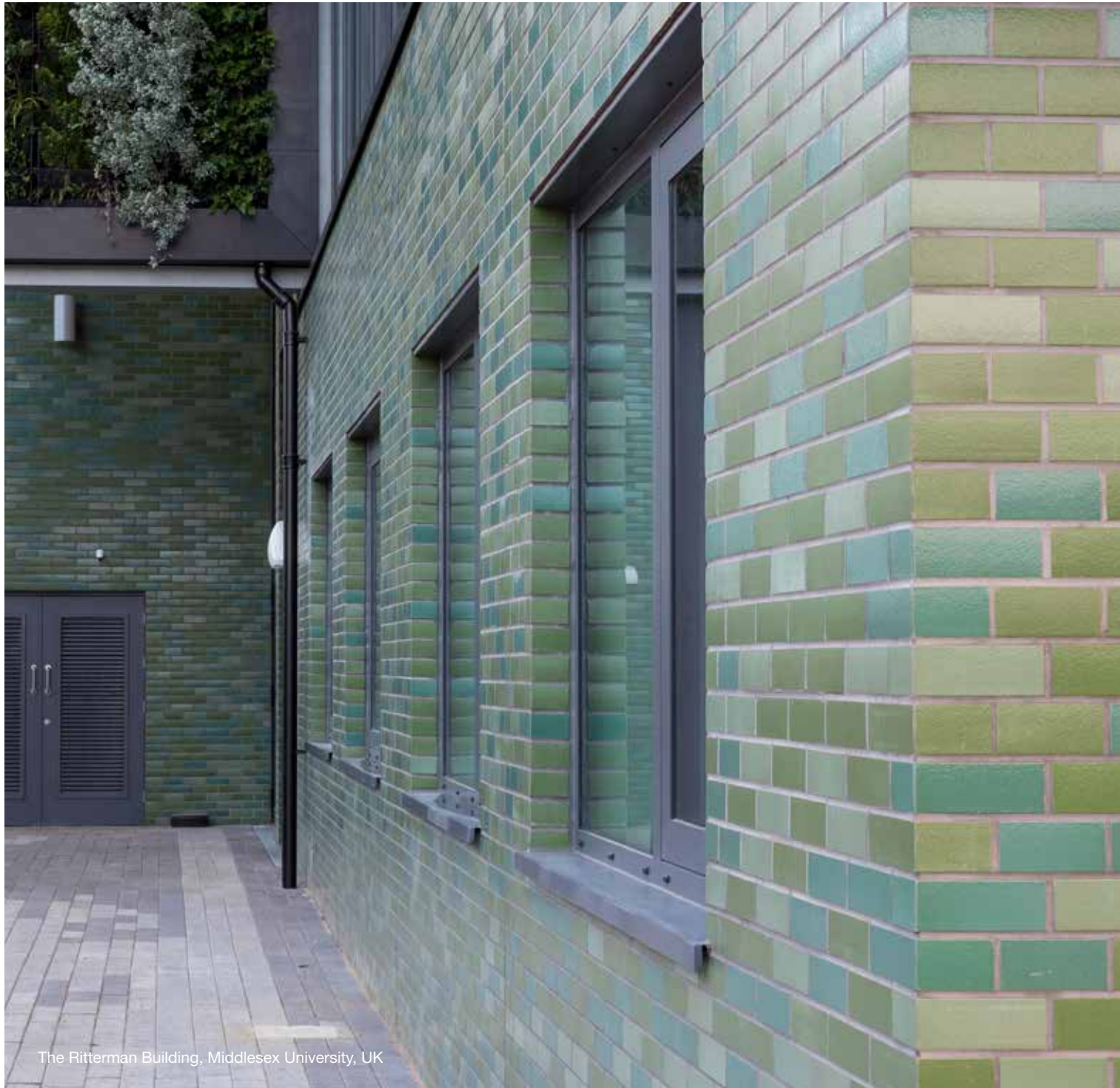
- Robust and durable: anticipated design life of 35 years
- Suitable for use with a wide range of sub-structures, including concrete, timber frame, structural steel, lightweight steel frames, structurally insulated panels and masonry.
- Very suited for high rise projects.
- Incombustible
- Fast and simple
 - Up to 4 to 5 times faster for construction speed than traditional brickwork, offering labour cost reductions and time savings.
 - It can be installed at temperatures and in moisture conditions where it would not be possible to lay traditional bricks.
- Cost effective: lighter weight, leading to cost savings on the structure and foundations.
- Industry tested and certified
- Circular



City Park West, Chelmsford, UK

Textures

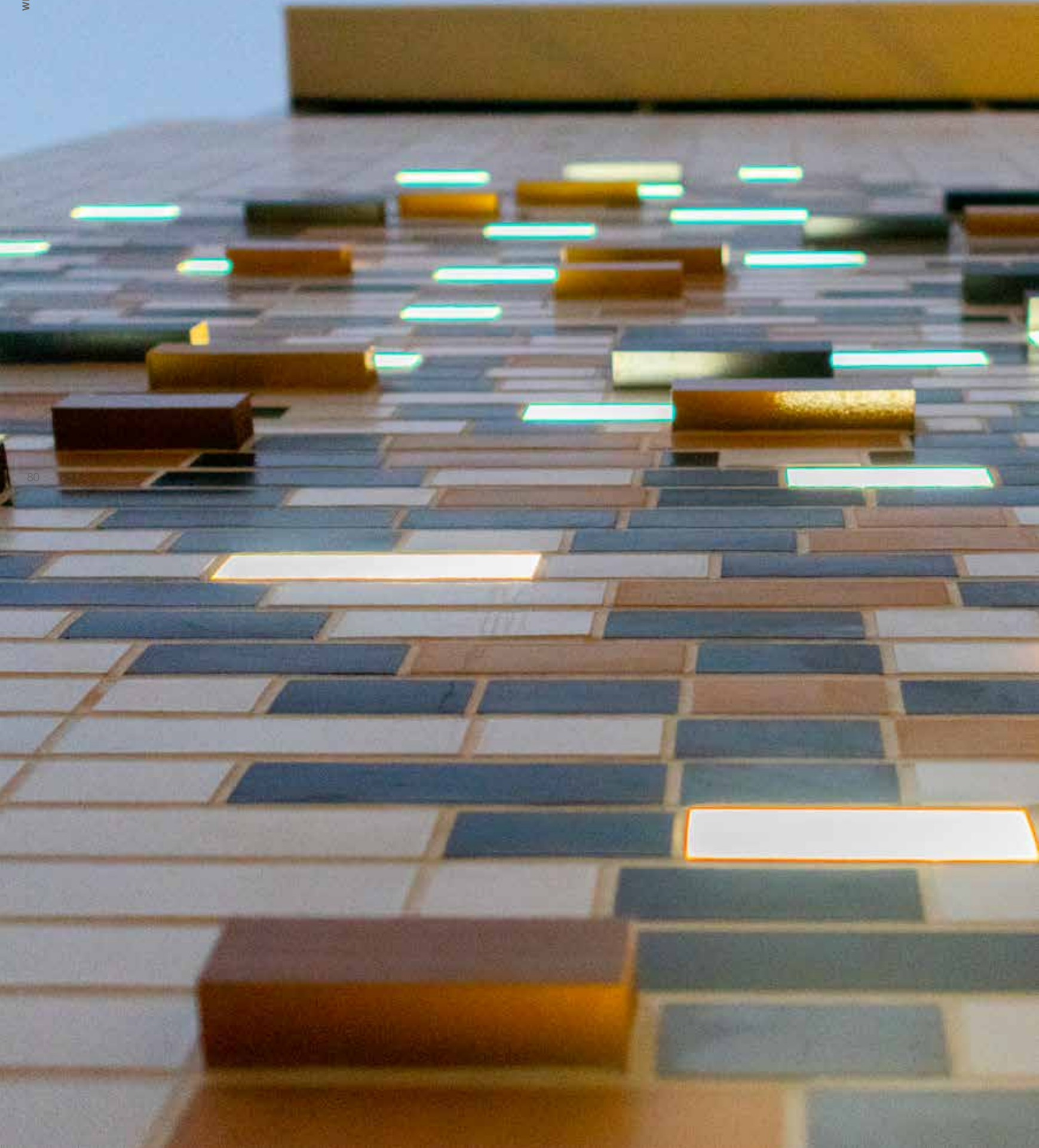
From the nuanced feel of traditional brick, to smooth, contemporary glazed brick slips, Corium® can define the look and feel of your building with a range of textures and finishes available to suit any scheme or style.

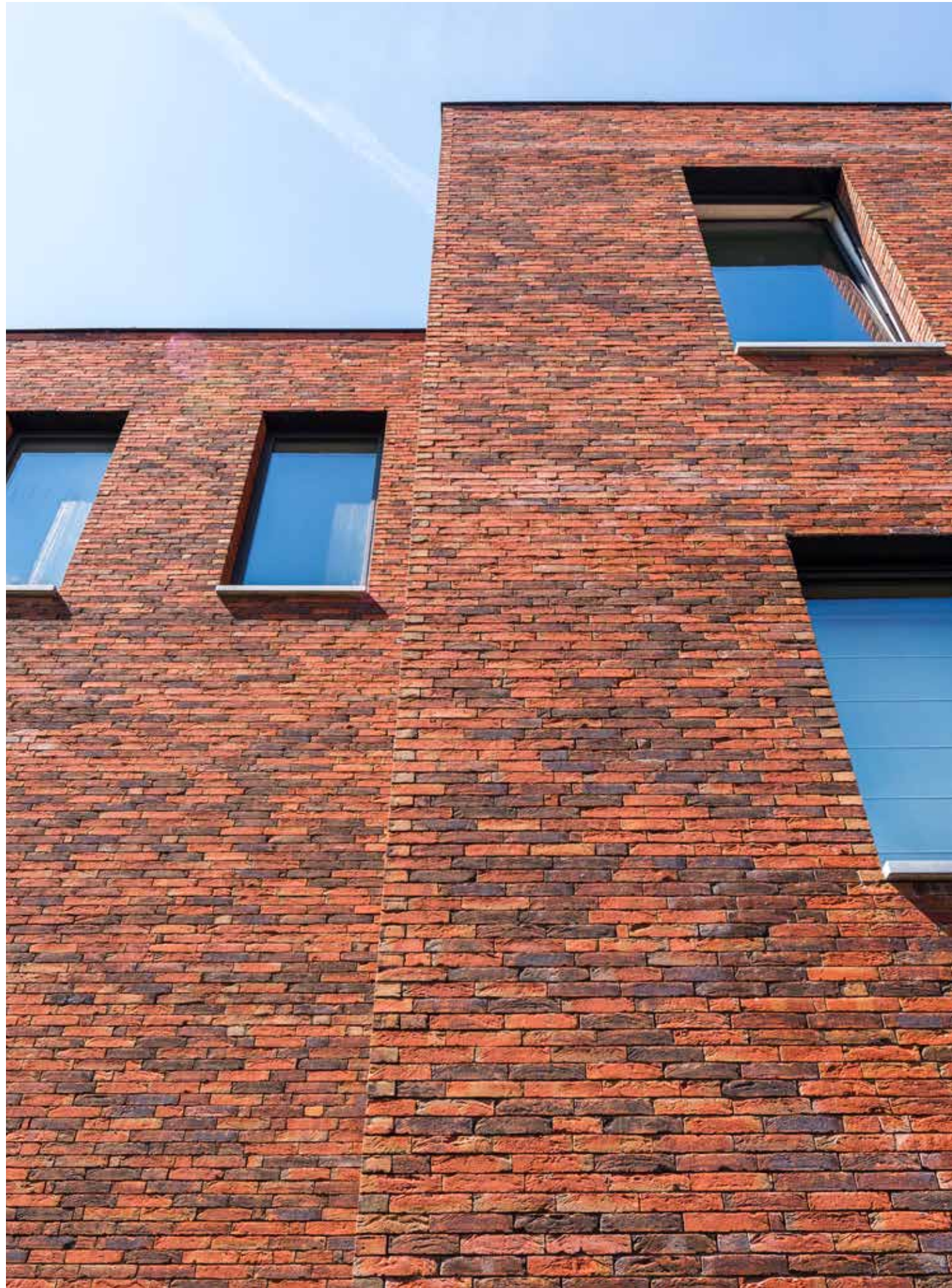


The Ritterman Building, Middlesex University, UK



Echo Central, Leeds, UK





Iluzo, laid traditionally but with a glued appearance

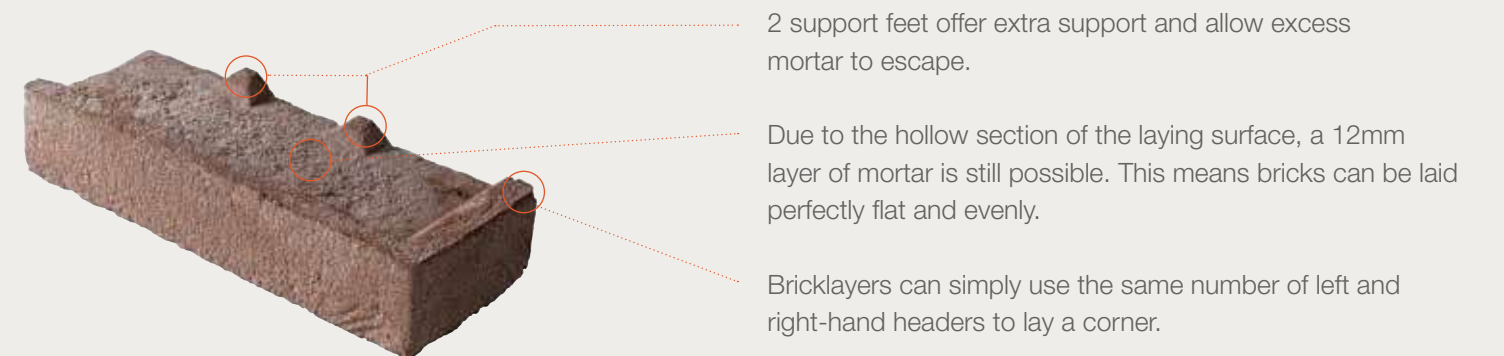
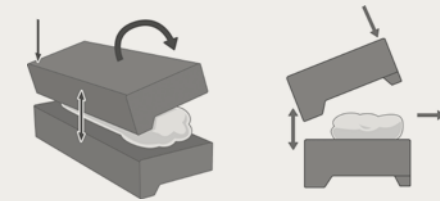
Iluzo makes thinly-jointed façades easy, affordable and stylish

Glued and thinly-jointed bricklaying is very popular these days. And rightly so, because many advantages can be realised by reducing joint thickness from 12 mm to approx. 4 mm. The bricks give the impression of being very closely spaced, which helps to better emphasise the solid and homogenous nature of the façade. And while classic joints have a major impact on the colour of the façade, this impact is reduced significantly when thin joints are used. A glued or thinly-jointed façade also ages slower, because joints have less impact on the overall colour.

Iluzo makes it possible to easily realise all these effects. This brick looks like it has been glued, but still offers the advantages of traditional bricklaying. This means professionals can simply use traditional mortar as they are accustomed.

In short: Iluzo combines the stylish appearance of glued bricklaying with the benefits of traditional bricklaying. The result? Convenience combined with aesthetic appeal.

Iluzo features a hollow area on the laying surface of the brick. This means a regular mortar layer of 12 mm is possible and there is enough freedom to lay bricks perfectly flat and equal.



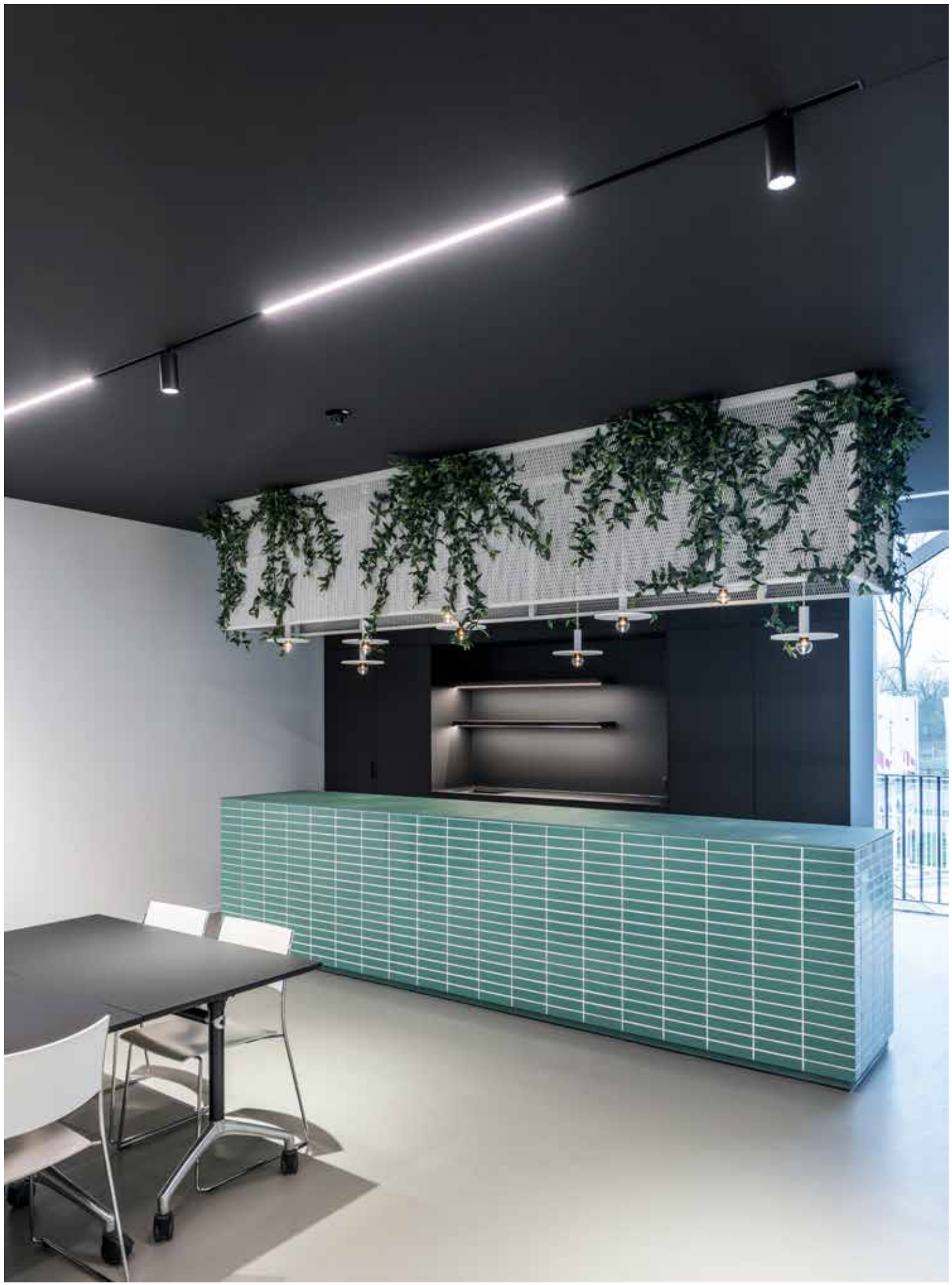
Glazed bricks, eye-catching creativity

Standard and Made to Order

Think out of the box, with Terca glazed bricks for monumental surfaces as well as for subtle details. Standard and in stock, the Wienerberger range comprises six colours: red, ivory white, blue, green, yellow and black. Suppliable in 'Waal' and 'English' format from an extruding press. These colours are available on request in smooth (press moulded) or with a rustic look (hand moulded). There are also 37 other standard colours available: clean (extrusion press), smooth (pressed mould) and rustic (hand-mould).

Customised

You need not feel limited to the standard colours. Almost all RAL colours can be produced per project, with specific finishes like pearl, metallic and glitter if required. Finishes with transparent glaze are also possible so that the underlying colour remains visible.





Mix of glazed bricks

New Build Housing

Glazed bricks also give a new façade or wall an eye-catching effect. Let your creativity run wild. Consider for example the uniform use of one colour, or of combinations in one colour with different textures, formats or shapes. On the other hand, a playful colour palette can give extra expression to a façade when required.

Special effects can also be created by using accents and areas with glazed bricks, creating contrasts in colour or texture with other materials. There are also other applications aside from façade exteriors. Glazed bricks are extremely suitable for seating elements, for example, either outside or in waiting rooms for public transport. Both for exterior and interior applications.

Wienerberger develops solutions with builders, designers and users to create maximum freedom for individual expression. The glazed bricks can be fully custom designed and manufactured. In fact, anything is possible.

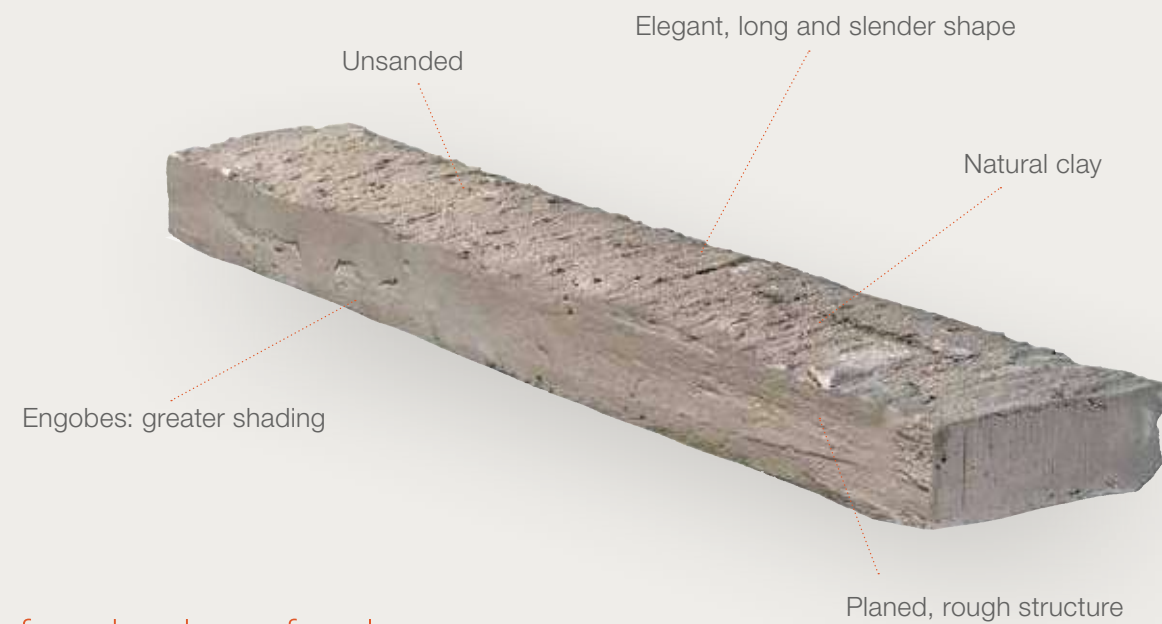


Waterstruck bricks, rough elegance

The white, opal-white, grey-white and quartz-grey bricks have also been given a matt engobe. This is a layer of clay that is fired onto the brick. It accentuates the stunning colour shades of these bricks.

With Waterstruck Special your façade radiates rough elegance. Because the long, slender bricks have a rough edge. Literally.

The weathered, lightly planed look is the result of a clever mix of natural clay and water during a unique production process. The clay is pressed into a mould, rolled and then removed from the mould using the Waterstruck method.



Free reign for shades of colour

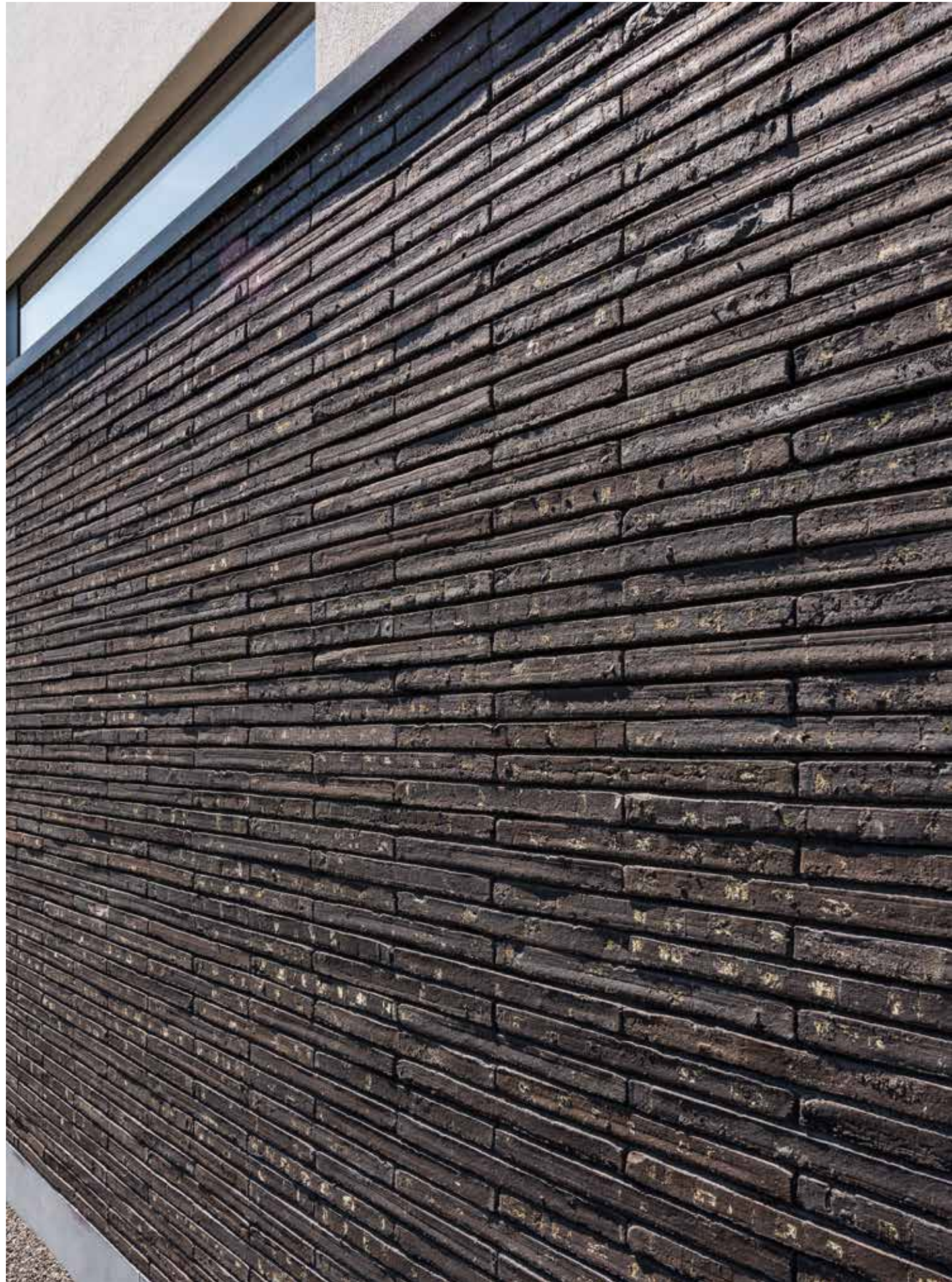
On the matt, unsanded brick, all manner of hues are given free reign. Some bricks also have an engobe: an extra layer of clay that highlights the shades in the brick even more.

Versatile application

You can process the bricks exactly as you want, in both new builds and renovation projects. Consider, for example, using thin mortar or glue with the long, slender bricks to emphasise the linear nature of the façade. In this way, the robust look and trendy appearance of Waterstruck Special also get full attention.



Waterstruck Red
Architect Claessens Architecten, Tems Belgium



Waterstruck Special Black

Architect Steven Vlamincx, Lede, Belgium



Waterstruck Special E1

Architect: Powerhouse Company, NL – Rotterdam i.s.m. Van der Jeugd Architecten, NL – Enschede
Photographer: Ossip van Duivenbode – Rotterdam

Cassia, unique colours for a unique brick

Changing appearance, permanent character

Cassia, unusually long for a facing brick at nearly 50 cm, has two different sides: one is planed smooth and the other is fractured or broken. This variation gives a stylish, creative effect. The fracture surface between the sides is always slightly different too. Combined with its exceptional length, this adds extra emphasis to the linear nature of the façade. The result? A façade that really says something and that people will also talk about. Cassia bricks are extremely resistant to frost and are available in three variants: Graphite Black, Red and Shadow.

Cassia gets its unique shapes from a special process. The bricks are delivered in pairs that are joined together and can very easily be broken apart at the building site. As a result, each brick has a smooth side and a broken side, which adds an extra accent to the structure of fine lines, and creates fascinating nuances of light and colour.



Cassia facing bricks can have a variety of appearances in the wall



Purely broken appearance (laid so that only the broken stretchers are showing)

Purely smoothed appearance (laid so that only the smoothed stretchers are showing)

Mixed appearance (laid so that a mixture of smoothed and broken stretchers is showing)



Cassia Graphite Black

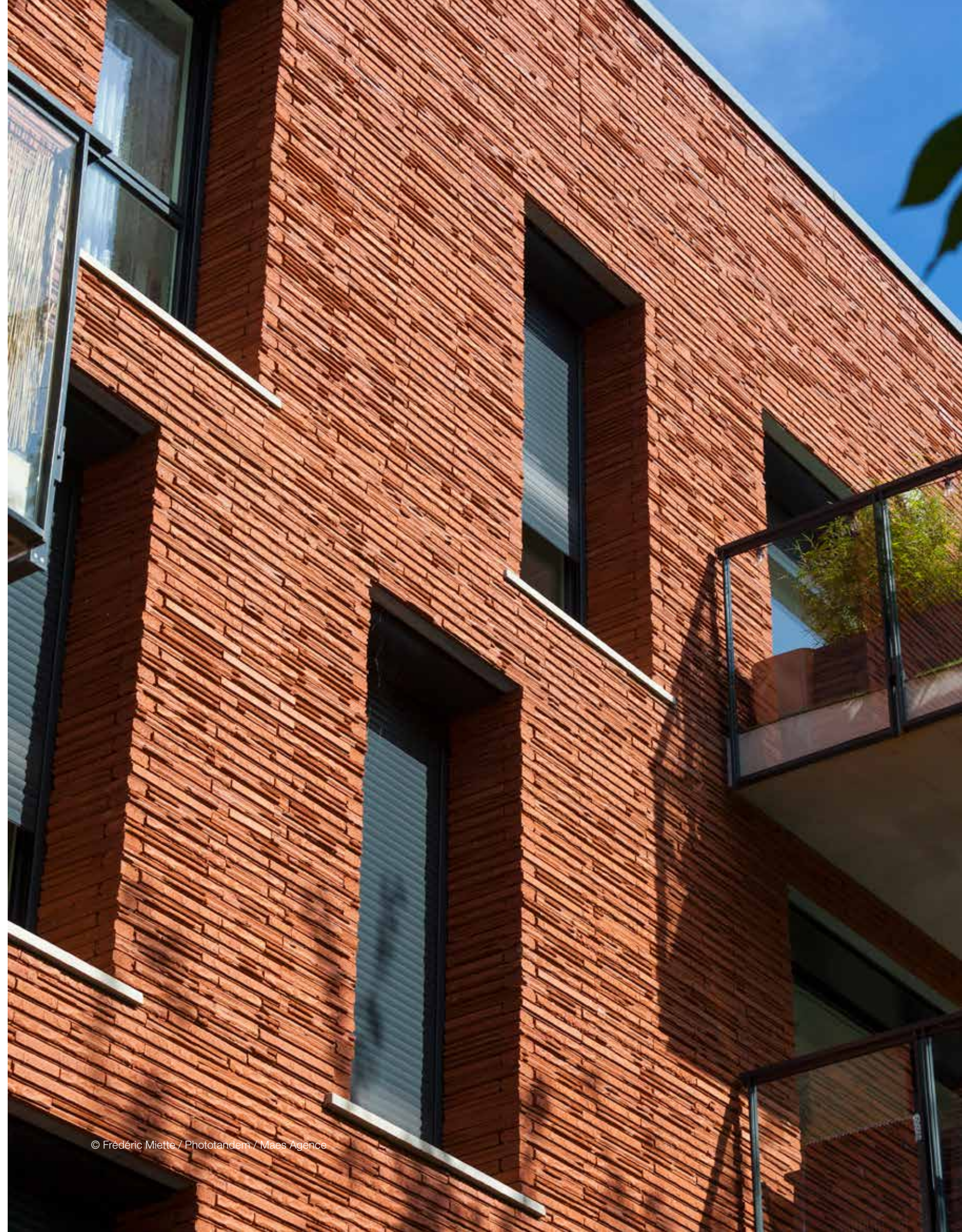
© Patrick Miara



Cassia Graphite Black



Architect: De Lathauwer - Van Goethem, Aalst, Belgium



© Frédéric Miette / Phototandem / Maes Agence

Argeton, our terracotta ventilated façade system

Argeton

Argeton was developed as a ceramic panel element for rear-ventilated curtain façades at the beginning of the 1980s. The objective was to create a timeless, modern façade with the distinctive character of clay as a natural product. Today, the name Argeton stands for quality, aesthetics and creativity. This success story is based on professional and forward-thinking product development, service-oriented sales and consistent quality assurance.

The Argeton façade crowns new, modern buildings and adds a contemporary character to restored property. In combination with steel, glass or wood, the Argeton façade impresses with its timeless perfection, elegance and naturalness. The aesthetics of the Argeton façade remain intact over many decades: a sophisticated water drainage prevents contamination.

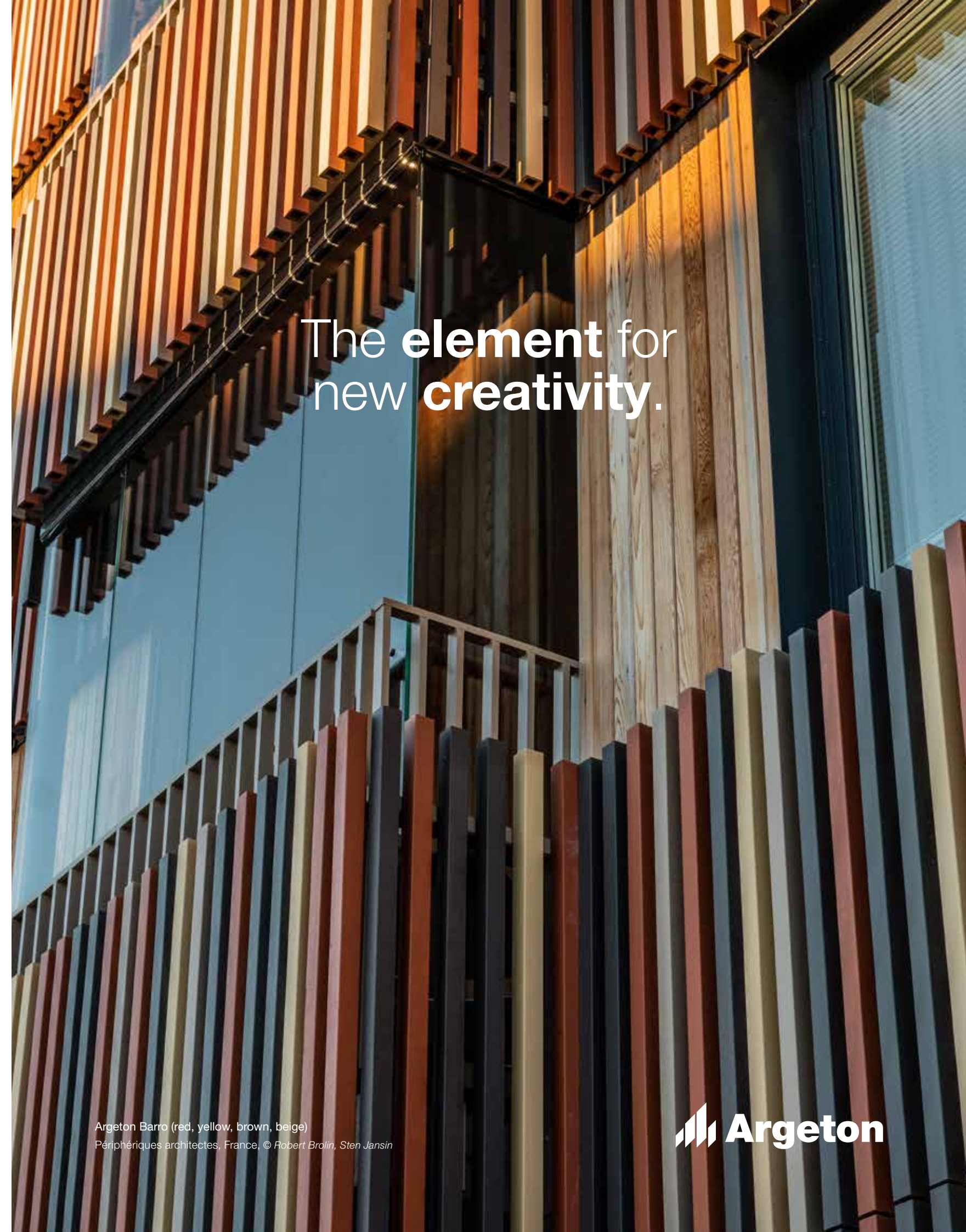
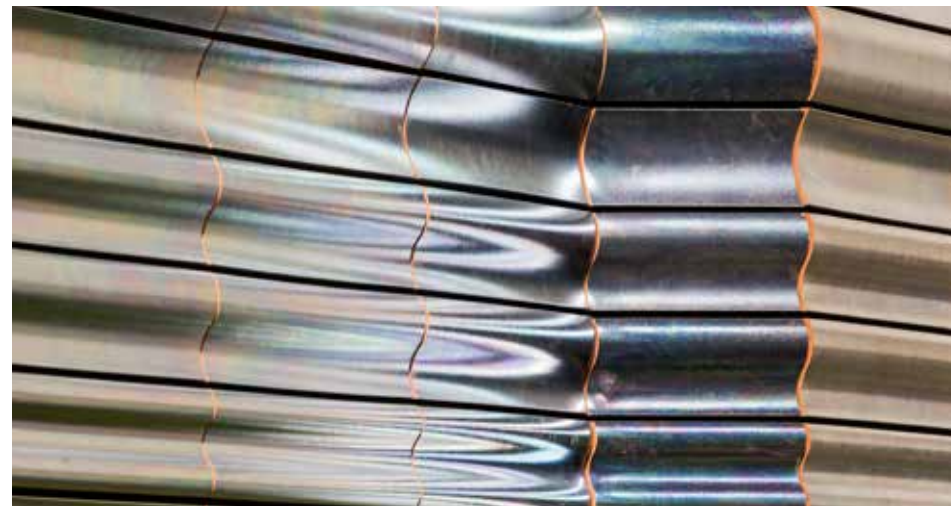
The ceramic colours remain resistant and strong, even when exposed to the toughest weather conditions. The façade is considered to be particularly fireproof. The joint profile protects the façade from lateral movement of the tiles, the penetration of rain and the clatter of tiles in the wind.

The **element** for
new **creativity**.

Design Benefits of an Argeton Façade

- Variety of formats: see product matrix, custom-made shapes possible
- Diverse colours: in addition to the standard colours, practically any colour can be produced with engobes or glazes
- Different tile surfaces: nature, glazed, engobed, grooved or structured
- Perfect for combination with traditional construction materials: ideal for building renovation

<https://www.argeton.com>



Argeton Barro (red, yellow, brown, beige)

Périphériques architectes, France. © Robert Brölin, Sten Jansin

 **Argeton**



Apartment Building, Argeton Argelite

Argeton Barro (red, light blue, yellow, purple, pink)
Agence Laurent Fournet Architectes, Lagny-sur-Marne

Merits and Benefits of an Argeton Façade

-  **Dimensional stability**
The terracotta panels are always within tolerances.

 **Frost-resistant**
According to DIN 52252, part 1

 **Non-fading / UV-resistant**
Argeton façades are non-fade and UV resistant.

 **Fire protection**
Fire protection classification A1
DIN 4102, EN 13501-1, non-flammable.

 **Ball impact safety**
We are one of the few who have tested and certified ball impact safety according to DIN 18032-3.

 **Scratch hardness Mohs scale 6-7**
The terracotta panels reach high scratch hardness.

 **Resistant to aggressive substances**
Argeton façades are resistant to aggressive substances. This is tested according to the standard DIN EN 10545-13

 **Sound insulation**
Improvement of sound insulation up to 9-dB possible.

 **Great variety of formats and colours**
In addition to the large standard range, individual shapes and colours can always be developed.

 **Hidden fasteners**
There are no outlet trace marks on the façade surface.

 **Fit for the purpose of new constructions and renovations**
The Argeton panels are suited for both new constructions and renovations.

 **High-rises**
All tile dimensions are suitable for building heights over 100m.

 **Long-life durability**
We guarantee long-life durability for our Argeton products.

 **No maintenance costs**
There are no maintenance costs, as the clay panels are cleaned by the natural weather.

 **Sustainable**
Natural clay is mined from the mine right next to the factory. The terracotta product then provides a natural, comfortable living environment.

 **Fully recyclable**
Argeton terracotta products are fully recyclable or reusable.

Danish design

At the end of 2019, the Wienerberger Group acquired established Nordic companies gaining their centuries-old expertise in brick and an inspiring product portfolio. The two brick manufacturers Vesterled and Helligsø in Denmark, and the retailer Egersund, one of the best-known names in the Danish brick business, produce a variety of high-quality products. Their portfolio ranges from bricks and moulded bricks, to beams, supports and brackets, as well as special bricks, lintels and pre-cast elements.



© 2018 Magma

BROWN - BLACK

Bison



Bison Coal



Brun



Vulcano



Brun Valmue



Grafit



Graklit



Kul



Mahogni



Patina



Sort Onyx



Strato



Strato Coal



Strato

YELLOW - WHITE

Aks



Antibes



Avignon



Gul



Halm



Hvede



Avignon Coal



Callisto



Cassis



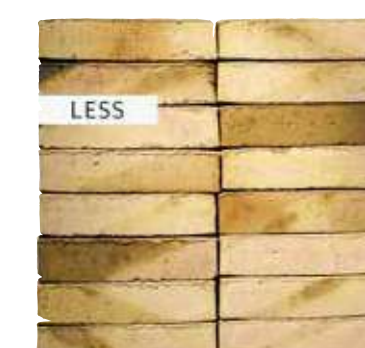
Light Coal



Limoux



Magma



Cassis Coal



Cold Hawaii



Eg



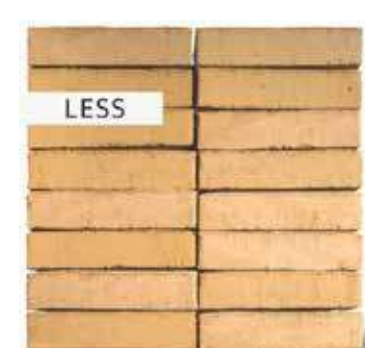
Messing



Flint



Fynsk Gul



Gul Nuanceret



Cassis Coal





Fynsk Gul

YELLOW - WHITE

White Bonus



White Gobi



Yellow Coal



Sand



Savanne



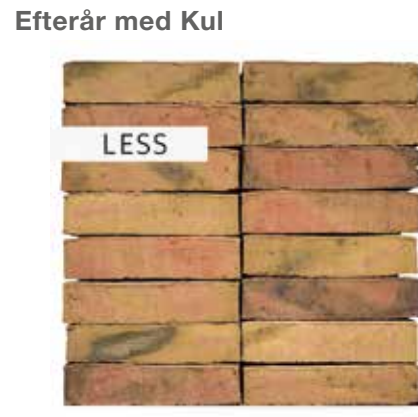
Stenberg



GREY



PINK



RED

Dyb Rød



Gammel Rød



Karmin



Rød Neutral



Terracotta Coal



Kobber



Lava



Pakhustegl



Terracotta



Valmue



Red Coal



Rust



Rød Etna



Rød Nuanceret



Terracotta
© Niels Nygaard

